



ROCKHARD

TOOLS, Inc.

2

ROCKHARD Drilling Products

Carbide Masonry Drill Bits

SDS Plus 2
 SDS Booster Plus 3
 SDS Plus Stop Bits 3
 Roto Percussion Straight Shank 4
 Multi-purpose Drill Bits 5
 Hex Multi-purpose Drill Bits 5
 SDS-Max 6
 Spline 2-Cutter 7
 Spline 4-Cutter 7
 A-Taper / Adapters 8
 Core Bits 9
 Points / Chisels 10
 Rebar Cutters 11
 Glass & Tile Drill Bits 12
 Diamond Hard Tile Drill Bits 12

13

Jobber Length Twist Drills

118° Black 13
 135° Black 14
 135° Black/Gold 15
 135° Black Cobalt 16
 Silver & Deming / Jobber Sets 17
 Jobber Countertop Dispenser 18
 High Speed Drill Bit Display 18
 Carbide Tipped HSS Metal Cutting Bits 19
 Titanium Step Bits 19
 Wood Spade Bits / Ship Auger Bits 20
 Bell Hanger / Flex Shank Bits 21
 Concrete Screws & Bits 22

26

ROCKHARD Fastening Systems

Extruded Anchors 26
 Extruded Anchor Merchandisers 27-28
 Rosett Anchor Blister Packs 29
 Light Rosett Anchor Blister Packs 29
 Conical Anchor & Plastic Toggle Blister Packs 30
 Conical / Rib / Super Rib Anchors Bulk & Pkg 31-32
 Plastic Toggle / Longhorn Anchors Bulk & Pkg 33
 Rosett Anchor Pkg 34
 Light Rosett Anchors Bulk & Pkg 35
 Plastic Boxes 35
 Anchor Kits 36-37
 Cable Ties 38-40
 Cable Tie Merchandiser 41

42

ROCKHARD Tools

Screwdriver Bit Tips / Nut Setters 42-43
 Bit Tip Jar Merchandiser 44
 Bit Tip Small Package Program 45-46
 Bit Tip Small Package Display 47

15 in 1 Screwdrivers	48-49
Utility Knife Display	50
6 in 1 Screwdrivers Display	50
Tape Measure Display	50

ROCKHARD Saw Blades

Hacksaw Blades

Hacksaw Blades	51
Hacksaw Frames / Saws	51

Jig Saw Blades

Bosch Shank	52-53
-------------------	-------

Pneumatic Blades

.....	54
-------	----

Reciprocating Blades

Bi-Metal Reciprocating Blades	55
Carbide Grit Recip Blades	55
Extra Heavy Duty Bi-Metal Blades	55
Reciprocating Blades Merchandiser	56

Hole Saws

Bi-Metal Hole Saw Accessories	57
Bi-Metal Hole Saws 4 / 6 Variable	58
Bi-Metal Hole Saws 10TPI Fine Tooth	58
Hole Saw Merchandiser	59
Hole Saw Kits	60
Carbide Tipped Hole Saws	61
Carbide Grit Hole Saws	61

Bandsaw Material

Portable Bandsaw Blades	62
Carbon Flex Bandsaw Blades	62
Bi-Metal Bandsaw Blades	63

51

55

57

62

Warranty: ROCKHARD Tools, Inc. warranties, to the original purchaser only, that all of its products will be free of manufacturer's defects in material and workmanship under normal service, proper installation and use. This warranty is limited to repair or replacement of verified defective products and excludes any and all implied warranty of merchantability and all risks and liability whatsoever resulting from any use of said products, including incidental and consequential damages. There are no warranties that extend beyond the description on the face thereof.

SAFETY FIRST



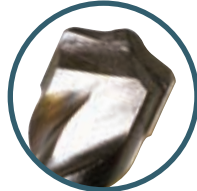
ALWAYS USE PROTECTION WHILE USING HAND OR POWER TOOLS

California Proposition 65

The state of California has determined that many substances such as concrete, wood, and paint may contain Prop. 65 substances. (Some other states have somewhat similar legislation and regulation.) California authorities believe that Prop. 65 requires a WARNING that drilling, sawing, cutting, etc. into such materials may expose the drill, sawer, etc. to the Prop. 65 substances contained in the material being drilled, sawed, etc. Therefore, Rockhard Tools offers the following:

Proposition 65 Warning

You can create dust when you cut, sand, drill or grind materials such as wood, paint, concrete, cement or other masonry. This dust often contains chemicals known to cause cancer, birth defects, or other reproductive harm. The current list of chemicals as well as other information regarding California Prop 65 can be accessed at <https://oehha.ca.gov/proposition-65>



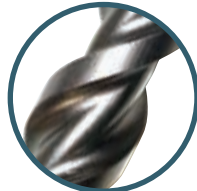
Faster Drilling from Chisel Shaped Head and new aggressive Carbide Tip which features:

- Self centering for precise starts.
- 150 degree angle for optimum elasticity and wear resistance resulting in longer life.
- Made in Germany
- Made to ANSI Specs

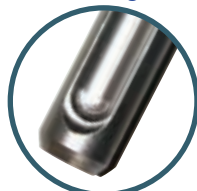


Longer Life from:

- Bronze alloy brazing of the carbide tip.
- High quality shot-peened steel strengthened to relieve tension and bit breakage.
- New wide fluting design flows the dust out of the hole faster thus reducing friction and adding life to the w cutting.



Square Flute Compression / Depression design provides better dust removal thus faster drilling.



SDS PLUS HAMMER DRILL BITS

Catalog #	Dia Ø	Total Length	Usable Length	Catalog #	Dia Ø	Total Length	Usable Length
JHSDS-400A	5/32"	x 4"	x 2"	JHSDS-413	7/16"	x 6"	x 4"
JHSDS-400B	5/32"	x 6"	x 4"	JHSDS-414	7/16"	x 12"	x 10"
JHSDS-401	3/16"	x 4"	x 2"	JHSDS-415	1/2"	x 6"	x 4"
JHSDS-401A	3/16"	x 6"	x 4"	JHSDS-416	1/2"	x 10"	x 8"
JHSDS-401B	3/16"	x 8"	x 6"	JHSDS-417	1/2"	x 12"	x 10"
JHSDS-401G	3/16"	x 12"	x 10"	JHSDS-418	1/2"	x 18"	x 16"
JHSDS-401C	7/32"	x 6"	x 4"	JHSDS-418A	1/2"	x 24"	x 22"
JHSDS-401D	7/32"	x 8"	x 6"	JHSDS-419	9/16"	x 6"	x 4"
JHSDS-401F	7/32"	x 16"	x 14"	JHSDS-420	9/16"	x 12"	x 10"
JHSDS-402	1/4"	x 4"	x 2"	JHSDS-420A	9/16"	x 18"	x 16"
JHSDS-403	1/4"	x 6"	x 4"	JHSDS-421	5/8"	x 6"	x 4"
JHSDS-403A	1/4"	x 8"	x 6"	JHSDS-422	5/8"	x 8"	x 6"
JHSDS-403B	1/4"	x 11"	x 9"	JHSDS-423	5/8"	x 12"	x 10"
JHSDS-403C	1/4"	x 20"	x 18"	JHSDS-424	5/8"	x 18"	x 16"
JHSDS-404	9/32"	x 4"	x 2"	JHSDS-424A	5/8"	x 24"	x 22"
JHSDS-406	5/16"	x 4"	x 2"	JHSDS-427	3/4"	x 8"	x 6"
JHSDS-407	5/16"	x 6"	x 4"	JHSDS-428	3/4"	x 10"	x 8"
JHSDS-408	5/16"	x 8"	x 6"	JHSDS-429	3/4"	x 12"	x 10"
JHSDS-408A	5/16"	x 12"	x 10"	JHSDS-430	3/4"	x 18"	x 16"
JHSDS-409	3/8"	x 6"	x 4"	JHSDS-432	7/8"	x 12"	x 10"
JHSDS-410	3/8"	x 10"	x 8"	JHSDS-433	7/8"	x 18"	x 16"
JHSDS-411	3/8"	x 12"	x 10"	JHSDS-434	1"	x 12"	x 10"
JHSDS-412	3/8"	x 18"	x 16"	JHSDS-435	1"	x 18"	x 16"
JHSDS-412A	3/8"	x 24"	x 22"				

SDS PLUS Bulk Packs

Catalog #	Dia Ø	Total Length	Usable Length	Qty	Catalog #	Dia Ø	Total Length	Usable Length	Qty
JSDSB-450	5/32"	x 4"	x 2"	25	JSDSB-480	1/4"	x 6"	x 4"	25
JSDSB-455	5/32"	x 6"	x 4"	25	JSDSB-485	1/4"	x 8"	x 6"	25
JSDSB-460	3/16"	x 4"	x 2"	25	JSDSB-490	3/8"	x 6"	x 4"	25
JSDSB-465	3/16"	x 6"	x 4"	25	JSDSB-495	1/2"	x 6"	x 4"	25
JSDSB-470	3/16"	x 8"	x 6"	25	JSDSB-500	5/8"	x 6"	x 4"	12
JSDSB-475	1/4"	x 4"	x 2"	25					

SDS-PLUS DRILL BIT Merchandiser

**Cat. No.: DISP62SDS
16" Wire Display with 8 hooks**

8 pc.	5/32" x 6" x 4"
8 pc.	3/16" x 6" x 4"
8 pc.	1/4" x 6" x 4"
8 pc.	3/8" x 6" x 4"
8 pc.	3/8" x 12" x 10"
8 pc.	1/2" x 6" x 4"
8 pc.	1/2" x 12" x 10"
6 pc.	5/8" x 12" x 10"





SDS BOOSTER PLUS HAMMER DRILL BITS

Catalog #	Dia Ø	Total Length	Usable Length	Catalog #	Dia Ø	Total Length	Usable Length
JHSDS-202	1/4"	x 4"	x 2"	JHSDS-215	1/2"	x 6"	x 4"
JHSDS-203	1/4"	x 6"	x 4"	JHSDS-216	1/2"	x 8"	x 6"
JHSDS-203A	1/4"	x 8"	x 6"	JHSDS-217	1/2"	x 12"	x 10"
JHSDS-203B	1/4"	x 12"	x 10"	JHSDS-217C	1/2"	x 18"	x 16"
JHSDS-203C	1/4"	x 18"	x 16"	JHSDS-217D	1/2"	x 24"	x 20"
JHSDS-205	9/32"	x 6"	x 4"	JHSDS-219	9/16"	x 6"	x 4"
JHSDS-206	5/16"	x 4"	x 2"	JHSDS-220	9/16"	x 12"	x 10"
JHSDS-207	5/16"	x 6"	x 4"	JHSDS-222	5/8"	x 8"	x 6"
JHSDS-208	5/16"	x 8"	x 6"	JHSDS-223	5/8"	x 12"	x 10"
JHSDS-208A	5/16"	x 12"	x 10"	JHSDS-223C	5/8"	x 18"	x 16"
JHSDS-208C	5/16"	x 18"	x 16"	JHSDS-223D	5/8"	x 24"	x 20"
JHSDS-208D	5/16"	x 24"	x 20"	JHSDS-224	3/4"	x 8"	x 6"
JHSDS-209	3/8"	x 6"	x 4"	JHSDS-225	3/4"	x 12"	x 10"
JHSDS-210	3/8"	x 8"	x 6"	JHSDS-225C	3/4"	x 18"	x 16"
JHSDS-211	3/8"	x 12"	x 10"	JHSDS-225D	3/4"	x 24"	x 20"
JHSDS-211C	3/8"	x 18"	x 16"				
JHSDS-211D	3/8"	x 24"	x 20"				

- Made in France
- Made to ANSI Specs



Rebar Resistant Centering Point Chiseling Effect 3 Lateral Supports.



Square Flute 3 Channels Provides Better Dust Removal thus Faster Drilling.



Designed for the most difficult drilling applications (hard aggregate, high PSI concrete, granite, even rebar).

The Booster Plus drill bit can produce up to 1,500 holes versus standard bits that only drill 300 holes.

SDS PLUS Drill Bits in Tool Pouch of 9

JHSDS-9SET

- 2 Pcs – 1/4" x 4"
- 1 PC – 5/32" x 4", 3/16" x 4", 5/16" x 4", 3/16" x 6", 1/4" x 6", 3/8" x 6", 1/2" x 6"



SDS PLUS Stop Bits

Catalog #	Dia Ø	Drill Depth
JHSDS-STP1	3/8"	1-1/16"
JHSDS-STP2	1/2"	13/16"
JHSDS-STP3	1/2"	1-11/16"
JHSDS-STP4	5/8"	1-1/16"
JHSDS-STP5	5/8"	2-1/16"

- Drill exact depth for Drop-In anchors
- Centering tip ensures accurate hole placement
- Extending fluting provides for a cleaner hole & better dust extraction
- Less concrete damage due to larger stop ring flange
- Made in Germany
- Made to ANSI specs





- Straight shank bits for professional use in 3-Jaw chuck drills.
- The correct bit for drilling brick, concrete, cinder block, stone, etc.
- Large program in industrial finish.
- Diamond ground tungsten carbide tip is copper brazed.
- Heat resistant up to 1,800 degrees Fahrenheit.
- Produced according to ANSI standards.
- Manufactured with a 15 degree negative grind to reduce carbide chipping.



- Made In France.
- Made to ANSI specifications.

ROTO PERCUSSION STRAIGHT SHANK BITS

Catalog #	Dia Ø	Total Length	Shank	Catalog #	Dia Ø	Total Length	Shank
JRP-1	1/8"	x 3"	x 1/8"	JRP-41	7/16"	x 6"	x 3/8"
JRP-1A	1/8"	x 2-3/8"	x 1/8"	JRP-45	1/2"	x 6"	x 1/2"
JRP-2	5/32"	x 3"	x 5/32"	JRP-46-WSL	1/2"	x 6"	x 3/8"
JRP-2A	5/32"	x 6"	x 5/32"	JRP-49	1/2"	x 12"	x 1/2"
JRP-4	3/16"	x 3-1/2"	x 3/16"	JRP-55	1/2"	x 20"	x 3/8"
JRP-5	3/16"	x 6"	x 3/16"	JRP-58	1/2"	x 24"	x 1/2"
JRP-7	7/32"	x 4"	x 7/32"	JRP-61	9/16"	x 6"	x 3/8"
JRP-8	15/64"	x 4"	x 15/64"	JRP-63	5/8"	x 6"	x 1/2"
JRP-9	1/4"	x 4"	x 1/4"	JRP-65	5/8"	x 13"	x 3/8"
JRP-10	1/4"	x 6"	x 1/4"	JRP-68	5/8"	x 20"	x 3/8"
JRP-11	1/4"	x 12"	x 1/4"	JRP-69	5/8"	x 24"	x 1/2"
JRP-13	1/4"	x 18"	x 1/4"	JRP-72	3/4"	x 6"	x 3/8"
JRP-14	1/4"	x 24"	x 1/4"	JRP-74	3/4"	x 13"	x 3/8"
JRP-16	9/32"	x 4"	x 1/4"	JRP-76-WSL	3/4"	x 20"	x 1/2"
JRP-17	9/32"	x 6"	x 1/4"	JRP-78	3/4"	x 24"	x 1/2"
JRP-18	5/16"	x 4-3/4"	x 5/16"	JRP-80	7/8"	x 6"	x 1/2"
JRP-20	5/16"	x 6"	x 5/16"	JRP-81	7/8"	x 13"	x 1/2"
JRP-22	5/16"	x 12"	x 5/16"	JRP-83	7/8"	x 20"	x 1/2"
JRP-26	5/16"	x 18"	x 5/16"	JRP-85	1"	x 6"	x 1/2"
JRP-29A	3/8"	x 4-1/2"	x 3/8"	JRP-86	1"	x 13"	x 1/2"
JRP-30	3/8"	x 6"	x 3/8"	JRP-88	1"	x 20"	x 1/2"
JRP-32	3/8"	x 13"	x 3/8"	JRP-91	1-1/8"	x 13"	x 1/2"
JRP-36	3/8"	x 20"	x 3/8"	JRP-93	1-1/4"	x 13"	x 1/2"
JRP-38	3/8"	x 24"	x 3/8"				

*WSL – While Supplies Last

STRAIGHT SHANK in Bulk Box of 25

Catalog #	Dia Ø	Total Length	Shank	Catalog #	Dia Ø	Total Length	Shank
JRPB-4A	3/16"	x 4"	x 3/16"	JRPB-10A	1/4"	x 6"	x 1/4"
JRPB-5A	3/16"	x 6"	x 3/16"	JRPB-30	3/8"	x 6"	x 3/8"
JRPB-9A	1/4"	x 4"	x 1/4"	JRPB-46-WSL	1/2"	x 6"	x 3/8"

STRAIGHT SHANK SETS in TOOL POUCHES

Catalog #	Dia Ø x Total Length
JRP-SET4	5/32"x3", 3/16"x3-1/2", 1/4"x4", 1/4"x6", 5/16"x4-3/4", 3/8"x4-1/2", 1/2"x6"
JRP-SET6	5/32"x6", 3/16"x6", 1/4"x4", 1/4"x6", 5/16"x6", 3/8"x6", 1/2"x6"



STRAIGHT SHANK DRILL BIT MERCHANDISER

Cat. No.: HDISP-JRP
14" Wire Display with 12 hooks

6 pc.	1/8" x 3" x 1/8"
6 pc.	5/32" x 3" x 5/32"
6 pc.	5/32" x 6" x 5/32"
6 pc.	3/16" x 3-1/2" x 3/16"
6 pc.	3/16" x 6" x 3/16"
6 pc.	1/4" x 4" x 1/4"
6 pc.	1/4" x 6" x 1/4"
4 pc.	5/16" x 4-3/4" x 5/16"
4 pc.	5/16" x 6" x 5/16"
4 pc.	3/8" x 4-1/2" x 3/8"
4 pc.	3/8" x 6" x 3/8"
4 pc.	1/2" x 6" x 3/8"



STRAIGHT SHANK and SDS PLUS DRILL BIT MERCHANDISER

Cat. No.: HDISP-RPSD
14" Wire Display with 18 hooks

6 pc.	1/8" x 3" x 1/8"	4 pc.	3/8" x 6" x 3/8"
6 pc.	5/32" x 3" x 5/32"	4 pc.	1/2" x 6" x 3/8"
6 pc.	5/32" x 6" x 5/32"	SDS Plus	
6 pc.	3/16" x 3-1/2" x 3/16"	4 pc.	5/32" x 6" x 4"
6 pc.	3/16" x 6" x 3/16"	4 pc.	3/16" x 6" x 4"
6 pc.	1/4" x 4" x 1/4"	4 pc.	1/4" x 6" x 4"
6 pc.	1/4" x 6" x 1/4"	4 pc.	5/16" x 6" x 4"
4 pc.	5/16" x 4-3/4" x 5/16"	4 pc.	3/8" x 6" x 4"
4 pc.	5/16" x 6" x 5/16"	4 pc.	1/2" x 6" x 4"
4 pc.	3/8" x 4-1/2" x 3/8"		

MULTI-PURPOSE DRILL BITS



Catalog #	Dia Ø	Total Length	Shank
JPLUS-1A	1/8" x	3-1/4" x	2"
JPLUS-1	5/32" x	3-1/4" x	2"
JPLUS-2	3/16" x	3-1/4" x	2"
JPLUS-3	1/4" x	4" x	2-1/4"
JPLUS-5	5/16" x	4-3/4" x	3"
JPLUS-6	3/8" x	4-3/4" x	3"
JPLUS-7	1/2" x	6" x	3-1/2"
JPLUS-7A	5/8" x	6-3/8" x	3-3/4"
JPLUS5-SET	- 1/8", 5/32", 3/16", 1/4", 5/16"		
JPLUS-MULTI SET	- 1/8", 3/16", 1/4", 5/16", 3/8"		

HEX MULTI-PURPOSE DRILL BITS - with 1/4" Hex Shank



Catalog #	Dia Ø	Total Length	Drill Length
JPLUS-8HX	1/8" x	3-3/4" x	1-1/2"
JPLUS-9HX	5/32" x	4-1/8" x	2"
JPLUS-10HX	3/16" x	4-1/8" x	2"
JPLUS-11HX	1/4" x	4-1/2" x	2-3/8"
JPLUS-12HX	5/16" x	5-1/8" x	3-1/8"
JPLUS-HXST	- 1/8", 5/32", 3/16", 1/4", 5/16"		

- Drill through brick, block, plaster, wood, wall tiles, plastics, light metals, aluminum.
- Precision milled high volume fluting for increased wear resistance & debris removal.
- Diamond ground carbide.
- **Rotary Drilling Only.**
- High grade hardened steel.
- Ideal for cordless drills.



DISP-MULTIPURPOSE

6	1/8" x 3
6	3/16" x 3-1/4"
6	1/4" x 4"
6	5/16" x 4-3/4"
6	3/8" x 4-3/4"
5	JPLUS-MULTI SETS



DISP-HEX MULTIPURPOSE

6	1/8" x 3-3/4"
6	5/32" x 4-1/8"
6	3/16" x 4-1/8"
6	1/4" x 4-1/2"
6	5/16" x 5-1/8"
5	JPLUS-HXST SETS



Rockhard SDS Max and Spline 4 Cutter Designs

- Designed for maximum performance in the most extreme conditions.
- Aggressive 4 cutter head geometry for longer life.
- Wear mark indicators (for better dimensional accuracy with anchor fittings.)
- Produces a rounder hole which will maximize anchor pull out values.
- Rebar chamfers to prevent chipping of the carbide.
- Less vibration for reduced stress on the drill motor and operator.
- High volume flute design for fast removal of dust & debris.
- Made in Germany.
- Made to ANSI specs.



SDS



SDS MAX HAMMER DRILL BITS

Catalog #	Dia Ø		Total Length		Usable Length	
JHHM-300A	1/2"	x	13"	x	7-1/2"	2 - Cutter
JHHM-300G	1/2"	x	21"	x	15-1/2"	
JHHM-300D	9/16"	x	13"	x	7-1/2"	
JHHM-300H	9/16"	x	21"	x	15-1/2"	
JHHM-300	5/8"	x	13"	x	7-1/2"	4 - Cutter
JHHM-301	5/8"	x	17"	x	11-1/2"	
JHHM-302	5/8"	x	21"	x	15-1/2"	
JHHM-302C	5/8"	x	36"	x	30-1/2"	
JHHM-302D	5/8"	x	21"	x	15-1/2"	
JHHM-303	3/4"	x	13"	x	7-1/2"	
JHHM-304	3/4"	x	17"	x	12"	
JHHM-305	3/4"	x	21"	x	15-1/2"	
JHHM-305C	3/4"	x	36"	x	30-1/2"	
JHHM-309	7/8"	x	13"	x	8"	
JHHM-310	7/8"	x	17"	x	12"	
JHHM-311	7/8"	x	21"	x	17"	
JHHM-312	1"	x	13"	x	8"	
JHHM-313	1"	x	17"	x	12"	
JHHM-314	1"	x	21"	x	17"	
JHHM-315	1"	x	36"	x	31"	
JHHM-317	1-1/8"	x	17"	x	12"	
JHHM-318	1-1/8"	x	21"	x	17"	
JHHM-320	1-1/4"	x	15"	x	10"	
JHHM-322	1-1/4"	x	23"	x	18"	
JHHM-322C	1-1/4"	x	36"	x	31"	
JHHM-324	1-3/8"	x	17"	x	12"	
JHHM-325	1-3/8"	x	23"	x	18"	
JHHM-326	1-1/2"	x	17"	x	12"	
JHHM-327	1-1/2"	x	23"	x	18"	
JHHM-328	1-3/4"	x	23"	x	18"	
JHHM-329	2"	x	23"	x	18"	

*1/2" and 9/16" SDS Max are 2-Cutter.

5/8" to 2" are 4-Cutter.

SDS-MAX DRILL BIT Merchandiser

Cat. No.: DISP24MAX
16" Wire Display with 8 hooks

3 pc.	1/2" x 13" x 8"
3 pc.	1/2" x 21" x 16"
3 pc.	5/8" x 13" x 8"
3 pc.	5/8" x 21" x 16"
3 pc.	3/4" x 13" x 8"
3 pc.	3/4" x 21" x 16"
3 pc.	7/8" x 13" x 8"
3 pc.	1" x 13" x 8"



SPLINE TWO AND FOUR CUTTER HAMMER BITS

Catalog # Spline 2-Cutter	Dia Ø	Total Length	Usable Length	Catalog # Spline 4-Cutter
JHSPL-502	3/8"	x 13"	x 7-1/2"	
JHSPL-502A	3/8"	x 16"	x 10-1/2"	
JHSPL-503	1/2"	x 13"	x 7-1/2"	
JHSPL-504	1/2"	x 16"	x 10-1/2"	
JHSPL-504A	1/2"	x 22"	x 16-1/2"	
JHSPL-504C	1/2"	x 27"	x 21-1/2"	
JHSPL-504B	1/2"	x 36"	x 30-1/2"	
JHSPL-505A	9/16"	x 13"	x 7-1/2"	
JHSPL-505B	9/16"	x 23"	x 17-1/8"	
JHSPL-505C	9/16"	x 29"	x 23-1/2"	
	5/8"	x 10"	x 4-1/2"	JSPLX-604
JHSPL-505	5/8"	x 13"	x 7-1/2"	
JHSPL-506	5/8"	x 16"	x 10-1/2"	JSPLX-606
JHSPL-506A	5/8"	x 22"	x 16-1/2"	JSPLX-606A
	5/8"	x 29"	x 23-1/2"	JSPLX-606B
	5/8"	x 36"	x 30-1/2"	JSPLX-606C
	11/16"	x 16"	x 10-1/2"	JSPLX-606D
	3/4"	x 10"	x 4-1/2"	JSPLX-606E
JHSPL-506B	3/4"	x 13"	x 7-1/2"	
JHSPL-507	3/4"	x 16"	x 10-1/2"	JSPLX-607
JHSPL-508	3/4"	x 22"	x 16-1/2"	JSPLX-608
	3/4"	x 36"	x 30-1/2"	JSPLX-608C
JHSPL-509	7/8"	x 16"	x 11"	JSPLX-609
JHSPL-510	7/8"	x 22"	x 17"	JSPLX-610
JHSPL-510A	1"	x 13"	x 8"	
JHSPL-511	1"	x 16"	x 11"	JSPLX-611
JHSPL-512	1"	x 22"	x 17"	JSPLX-612
	1"	x 36"	x 31"	JSPLX-613C
JHSPL-514	1-1/8"	x 16"	x 11"	JSPLX-614
JHSPL-515	1-1/8"	x 22"	x 17"	JSPLX-615
JHSPL-516	1-1/4"	x 16"	x 11"	JSPLX-616
JHSPL-517	1-1/4"	x 22"	x 17"	JSPLX-617
	1-1/4"	x 36"	x 31"	JSPLX-617C
JHSPL-518	1-3/8"	x 16"	x 11"	
	1-3/8"	x 22"	x 17"	JSPLX-619
JHSPL-520	1-1/2"	x 16"	x 11"	
JHSPL-521	1-1/2"	x 22"	x 17"	JSPLX-621
JHSPL-521C	1-3/4"	x 22"	x 17"	
	1-3/4"	x 23"	x 18"	JSPLX-621C
JHSPL-523	2"	x 22"	x 17"	
	2"	x 23"	x 18"	JSPLX-623



SPLINE DRILL BIT Merchandisers

Cat. No.: DISP-SPLINE 2X 16" Wire Display with 8 hooks	Cat. No.: DISP-SPLINE4X 16" Wire Display with 8 hooks
3 pc. 3/8" x 13" x 7-1/2"	3 pc. 5/8" x 16" x 10-1/2"
3 pc. 1/2" x 13" x 7-1/2"	3 pc. 5/8" x 22" x 16-1/2"
3 pc. 1/2" x 16" x 10-1/2"	3 pc. 3/4" x 16" x 10-1/2"
3 pc. 1/2" x 22" x 16-1/2"	3 pc. 3/4" x 22" x 16-1/2"
3 pc. 5/8" x 22" x 16-1/2"	3 pc. 7/8" x 16" x 11"
3 pc. 3/4" x 16" x 10-1/2"	2 pc. 1" x 16" x 11"
3 pc. 3/4" x 22" x 16-1/2"	2 pc. 1" x 22" x 17"
3 pc. 7/8" x 16" x 11"	2 pc. 1-1/4" x 16" x 11"



A-TAPER HAMMER DRILL BITS

Catalog #	Dia Ø	Total Length	Usable Length	Catalog #	Dia Ø	Total Length	Usable Length
JHA-3	1/4"	x 4"	x 2"	JHA-19	1/2"	x 20"	x 18"
JHA-4	1/4"	x 6"	x 4"	JHA-23	5/8"	x 5"	x 3"
JHA-7	5/16"	x 6"	x 4"	JHA-24	5/8"	x 9"	x 7"
JHA-9	3/8"	x 6"	x 4"	JHA-25	5/8"	x 12"	x 10"
JHA-10	3/8"	x 9"	x 7"	JHA-26	5/8"	x 18"	x 16"
JHA-11	3/8"	x 12"	x 10"	JHA-30	3/4"	x 9"	x 7"
JHA-12	3/8"	x 20"	x 18"	JHA-31	3/4"	x 12"	x 10"
JHA-16	1/2"	x 6"	x 4"	JHA-32	3/4"	x 18"	x 16"
JHA-17	1/2"	x 9"	x 7"	JHA-34	7/8"	x 10"	x 7"
JHA-18	1/2"	x 12"	x 10"				

ROCKHARD ADAPTERS



JAD-812A SDS Plus to A-Taper Adapter



JAD-815A Spline to A-Taper Adapter



JAD-857A SDS MAX to A-Taper Adapter



JAD-815H Spline to SDS-Plus Adapter



JAD-857H SDS MAX to SDS-Plus Adapter



JAD-840S SDS MAX to Spline Adapter



JAD-845X Spline to SDS MAX Adapter

ONE PIECE CORE BITS FOR ELECTRIC HAMMERS

SDS Max

Spline

Catalog #	Dia Ø	Total Length	Usable Length	Catalog #	Dia Ø	Total Length	Usable Length
CB-200	1-1/2"	x 11-3/8"	x 6"	CB-300	1-1/2"	x 11-3/8"	x 6"
CB-210	1-1/2"	x 22"	x 17"	CB-310	1-1/2"	x 22"	x 17"
CB-211	1-3/4"	x 11-3/8"	x 6"	CB-311	1-3/4"	x 11-3/8"	x 6"
CB-212	1-3/4"	x 22"	x 17"	CB-312	1-3/4"	x 22"	x 17"
CB-215	2"	x 11-3/8"	x 6"	CB-315	2"	x 11-3/8"	x 6"
CB-220	2"	x 22"	x 17"	CB-320	2"	x 22"	x 17"
CB-225	2-5/8"	x 11-3/8"	x 6"	CB-325	2-5/8"	x 11-3/8"	x 6"
CB-230	2-5/8"	x 22"	x 17"	CB-330	2-5/8"	x 22"	x 17"
CB-235	3-1/8"	x 11-3/8"	x 6"	CB-335	3-1/8"	x 11-3/8"	x 6"
CB-240	3-1/8"	x 22"	x 17"	CB-340	3-1/8"	x 22"	x 17"
CB-245	3-1/2"	x 11-3/8"	x 6"	CB-345	3-1/2"	x 11-3/8"	x 6"
CB-250	3-1/2"	x 22"	x 17"	CB-350	3-1/2"	x 22"	x 17"
CB-255	4"	x 11-3/8"	x 6"	CB-355	4"	x 11-3/8"	x 6"
CB-260	4"	x 22"	x 17"	CB-360	4"	x 22"	x 17"
CB-265	5"	x 11-3/8"	x 6"	CB-365	5"	x 11-3/8"	x 6"
CB-270	5"	x 22"	x 17"	CB-370	5"	x 22"	x 17"
CB-280	6"	x 22"	x 17"	CB-380	6"	x 22"	x 17"
SB-434	7/16" x 4-3/4" Pilot Drill			EK-500	3/8" Round Drift Key		



- One Piece Core Bits offer greater strength and deliver more power transmission for increased coring speed.
- Centering bit can be removed after hole is started for increased bit life.
- Outer spiral for reduced friction and better dust removal for longer core life.
- Made in Germany.
- Made to ANSI Specifications.



2-5/8" Maximum Drilling Depth



STEEL POINTS & CHISELS FOR ELECTRIC HAMMERS



	Total Length	Spline Catalog #	3/4" Hex Catalog #	SDS MAX Catalog #	SDS Plus Catalog #
	10"				BP10-200
	12"	CBP12-1	CBP12-40	BX12-100	
	18"	CBP18-5	CBP18-45	BX18-105	
	3/4" x 10"				FL10-205
	1" x 12"	CFL12-10	CBL12-50	FX12-110	
	1" x 18"	CFL18-15	CBL18-55	FX18-115	
	1 1/2" x 10"				SC10-210
	2" x 12"	CSC12-20	CSC12-60	SX12-125	
	3" x 12"	CSC12-30	CSC12-65	SX12-135	
	7/8" x 10"				GT78-215
	1" x 12"			GT1-120	
	1-1/8" x 12"	CST12-25	CST12-65	SXT12-140	
	15"	CMS15-30	CMS15-70	SXM15-145	
	7/8" x 10 1/4"	CGR10-40	CGR10-80	SXG10-155	
	1 3/4" x 9 1/4"		BT-65		
	1 3/4" x 9 1/2"	BT-25		BTX-130	

- Chisels are produced from the highest quality steels.
- Shot peened surface treatment relieves stresses to prevent breakage.
- Forged to maintain molecular structure for longer service life.
- Made in Germany.



REBAR CUTTERS



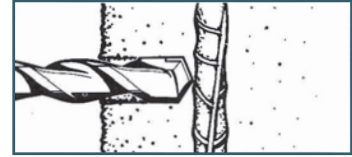
Catalog #	Dia Ø		Total Length	Recommended RPM
DRB-6	3/8"	x	8"	850-1200
DRB-8	1/2"	x	12"	850-1200
DRB-9	9/16"	x	12"	850-1200
DRB-10	5/8"	x	12"	750-1000
DRB-1018	5/8"	x	18"	750-1000
DRB-11	11/16"	x	12"	750-1000
DRB-12	3/4"	x	12"	600-850
DRB-1218	3/4"	x	18"	600-850
DRB-13	13/16"	x	12"	600-850
DRB-14	7/8"	x	12"	600-850
DRB-16	1"	x	12"	500-750
DRB-18	1-1/8"	x	12"	500-750
DRB-20	1-1/4"	x	12"	450-600
DRB-22	1-3/8"	x	12"	450-600
DRB-24	1-1/2"	x	12"	350-500
DRB-28	1-3/4"	x	12"	350-500
DRB-32	2"	x	12"	350-500
DRB-40	2-1/2"	x	12"	350-500

Made in USA



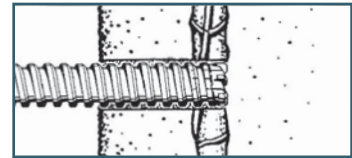
1

Stop drilling when rebar is encountered.



2

Load a rebar cutter of the same diameter as the hole in a 1/2" drill motor. **Rotary only.**



3

Remove the rotary rebar cutter after the rebar has been drilled completely through and finish drilling the hole with the rotary hammer and hammer bit.



Helpful Application Tips:

- Designed for use in standard 1/2" drill motor with 3-jaw chuck.
- Must be used in **Rotation Mode Only**: Percussion (hammer mode) will damage the tool.
- Low RPM's best, use ample operator pressure, remove steel "slug" from hole or rebar cutter, dry-cut recommended.
- Sizes 7/8" through 1-3/4" have a 1/2" - 13 thread size; 2" and 2-1/2" have a 3/4" -10" thread size.
- **Caution:** Rebar Cutters are designed to be problem solvers. Hole performance can vary greatly depending on the application and how the rebar is encountered. **They should not be used for drilling concrete. Rebar Cutters are not warranted for repair or replacement.**



GLASS / TILE DRILL BITS

Catalog #	Dia Ø		Total Length
GB-1	1/8"	x	2-1/2"
GB-2	3/16"	x	2-1/2"
GB-3	1/4"	x	2-1/2"
GB-4	5/16"	x	2-3/4"
GB-5	3/8"	x	3-1/8"
GB-6	1/2"	x	3-1/8"



- Drills through tile and glass under "Rotation Only" with or without water.
- Sharpening of an ogival point allows for a precise hole to be started without the bit walking.
- The "Aspic tongue" shape allows you to progressively determine the desired diameter.

DIAMOND HARD TILE DRILL BITS

Catalog #	Catalog # Bulk	Dia Ø
DBS-5	DBB-5	3/16"
DBS-6	DBB-6	1/4"
DBS-8	DBB-8	5/16"
DBS-10	DBB-10	3/8"
DBS-12	DBB-12	1/2"
	DBB-WR	Water Reservoir



- Use in rotary drilling only with water lubrication.
- Excellent for drilling:
 - Glass
 - Glaze
 - Sandstone
 - Terra Cotta
 - Marble
 - Cement
 - Tiles (up to 5th Class)
 - Porcelain
 - Quarry
 - Terrazzo
 - Agglomerate
 - Granite

- The Rockhard Diamond Hard Tile Bits should be water cooled at all times.
- Dilling should start with the drill rotating at 1200 - 2000 rpm and held at 45 degrees to the tile surface¹.
- When a score has formed on the surface of the tile the drill can gradually be brought up to perpendicular to the tile surface².
- It is recommended to use a slight "rocking" motion while drilling. This helps with cooling and dust removal.

Recommended Speed Chart

Drill Size	Recommended RPM
3/16"	1500 - 2000
1/4" - 1/2"	2000 - 2500

Diamond Hard Tile Bits can be used dry, but this gives a very limited life in hard tiles meaning they will perform their best when used wet.

WARNING: Always wear safety glasses when using or near power tools

JOBBER TWIST DRILLS BLACK OXIDE 118°



- Drills in Wood, Steel, Plastic, Cast Iron & other materials.
- 118 Degree Starts Cutting Immediately.
- High Quality M7 High Speed Steel.
- High Temperature, Black Oxide Wear Resistant Surface Treatment.
- Bulk packaged in Polybags, Individually in Vinyl Sleeves or Sets.

Made in the USA



Bulk Packaging

Cat No. Bulk	Dia Ø	Total Length	Usable Length	Pkg/ Bag	Cat No. Bulk	Dia Ø	Total Length	Usable Length	Pkg/ Bag
JHSTD-1	1/16"	x 1-7/8"	x 7/8"	10	JHSTD-16	19/64"	x 4-3/8"	x 3-1/16"	5
JHSTD-2	5/64"	x 2"	x 1"	10	JHSTD-17	5/16"	x 4-1/2"	x 3-3/16"	5
JHSTD-3	3/32"	x 2-1/4"	x 1-1/4"	10	JHSTD-18	21/64"	x 4-5/8"	x 3-5/16"	5
JHSTD-4	7/64"	x 2-5/8"	x 1-1/2"	10	JHSTD-19	11/32"	x 4-3/4"	x 3-7/16"	5
JHSTD-5	1/8"	x 2-3/4"	x 1-5/8"	10	JHSTD-20	23/64"	x 4-7/8"	x 3-1/2"	5
JHSTD-6	9/64"	x 2-7/8"	x 1-3/4"	10	JHSTD-21	3/8"	x 5"	x 3-5/8"	5
JHSTD-7	5/32"	x 3-1/8"	x 2"	10	JHSTD-22	25/64"	x 5-1/8"	x 3-3/4"	5
JHSTD-8	11/64"	x 3-1/4"	x 2-1/8"	10	JHSTD-23	13/32"	x 5-1/4"	x 3-7/8"	5
JHSTD-9	3/16"	x 3-1/2"	x 2-5/16"	10	JHSTD-24	27/64"	x 5-3/8"	x 3-15/16"	5
JHSTD-10	13/64"	x 3-5/8"	x 2-7/16"	10	JHSTD-25	7/16"	x 5-1/2"	x 4-1/16"	5
JHSTD-11	7/32"	x 3-3/4"	x 2-1/2"	10	JHSTD-26	29/64"	x 5-5/8"	x 4-3/16"	5
JHSTD-12	15/64"	x 3-7/8"	x 2-5/8"	10	JHSTD-27	15/32"	x 5-3/4"	x 4-5/16"	5
JHSTD-13	1/4"	x 4"	x 2-3/4"	10	JHSTD-28	31/64"	x 5-7/8"	x 4-3/8"	5
JHSTD-14	17/64"	x 4-1/8"	x 2-7/8"	10	JHSTD-29	1/2"	x 6"	x 4-1/2"	5
JHSTD-15	9/32"	x 4-1/4"	x 2-15/16"	10					

Bulk packaging: Sizes 1/16" – 9/32" are 10 bits per bag. Other sizes 5 bits per bag

Sleeve Packaging

Cat No. Sleeve	Dia Ø	Total Length	Usable Length	Pkg/ Sleeve	Cat No. Sleeve	Dia Ø	Total Length	Usable Length	Pkg/ Sleeve
JHSTD-1C	1/16"	x 1-7/8"	x 7/8"	1	JHSTD-16C	19/64"	x 4-3/8"	x 3-1/16"	1
JHSTD-2C	5/64"	x 2"	x 1"	1	JHSTD-17C	5/16"	x 4-1/2"	x 3-3/16"	1
JHSTD-3C	3/32"	x 2-1/4"	x 1-1/4"	1	JHSTD-18C	21/64"	x 4-5/8"	x 3-5/16"	1
JHSTD-4C	7/64"	x 2-5/8"	x 1-1/2"	1	JHSTD-19C	11/32"	x 4-3/4"	x 3-7/16"	1
JHSTD-5C	1/8"	x 2-3/4"	x 1-5/8"	1	JHSTD-20C	23/64"	x 4-7/8"	x 3-1/2"	1
JHSTD-6C	9/64"	x 2-7/8"	x 1-3/4"	1	JHSTD-21C	3/8"	x 5"	x 3-5/8"	1
JHSTD-7C	5/32"	x 3-1/8"	x 2"	1	JHSTD-22C	25/64"	x 5-1/8"	x 3-3/4"	1
JHSTD-8C	11/64"	x 3-1/4"	x 2-1/8"	1	JHSTD-23C	13/32"	x 5-1/4"	x 3-7/8"	1
JHSTD-9C	3/16"	x 3-1/2"	x 2-5/16"	1	JHSTD-24C	27/64"	x 5-3/8"	x 3-15/16"	1
JHSTD-10C	13/64"	x 3-5/8"	x 2-7/16"	1	JHSTD-25C	7/16"	x 5-1/2"	x 4-1/16"	1
JHSTD-11C	7/32"	x 3-3/4"	x 2-1/2"	1	JHSTD-26C	29/64"	x 5-5/8"	x 4-3/16"	1
JHSTD-12C	15/64"	x 3-7/8"	x 2-5/8"	1	JHSTD-27C	15/32"	x 5-3/4"	x 4-5/16"	1
JHSTD-13C	1/4"	x 4"	x 2-3/4"	1	JHSTD-28C	31/64"	x 5-7/8"	x 4-3/8"	1
JHSTD-14C	17/64"	x 4-1/8"	x 2-7/8"	1	JHSTD-29C	1/2"	x 6"	x 4-1/2"	1
JHSTD-15C	9/32"	x 4-1/4"	x 2-15/16"	1					

Sleeve packaging: 1 per sleeve

JOBBER TWIST DRILLS BLACK OXIDE 135° Split Point



- Drills in Wood, Steel, Plastic, Cast Iron & other materials.
- 135 Degree Self Starting Split Point Eliminates Need for Center Punch.
- High Quality M2 High Speed Steel.
- High Temperature, Black Oxide Wear Resistant Surface Treatment.
- Ideal for Drilling Carbon or Alloy Steels.
- Bulk packaged in Polybags, Individually-Vinyl Sleeves or Sets.

Imported

Bulk Packaging

Cat No. Bulk	Dia Ø	Total Length	Usable Length	Pkg/ Bag	Cat No. Bulk	Dia Ø	Total Length	Usable Length	Pkg/ Bag
JHSB-1	1/16"	x 1-7/8"	x 7/8"	10	JHSB-16	19/64"	x 4-3/8"	x 3-1/16"	5
JHSB-2	5/64"	x 2"	x 1"	10	JHSB-17	5/16"	x 4-1/2"	x 3-3/16"	5
JHSB-3	3/32"	x 2-1/4"	x 1-1/4"	10	JHSB-18	21/64"	x 4-5/8"	x 3-5/16"	5
JHSB-4	7/64"	x 2-5/8"	x 1-1/2"	10	JHSB-19	11/32"	x 4-3/4"	x 3-7/16"	5
JHSB-5	1/8"	x 2-3/4"	x 1-5/8"	10	JHSB-20	23/64"	x 4-7/8"	x 3-1/2"	5
JHSB-6	9/64"	x 2-7/8"	x 1-3/4"	10	JHSB-21	3/8"	x 5"	x 3-5/8"	5
JHSB-7	5/32"	x 3-1/8"	x 2"	10	JHSB-22	25/64"	x 5-1/8"	x 3-3/4"	5
JHSB-8	11/64"	x 3-1/4"	x 2-1/8"	10	JHSB-23	13/32"	x 5-1/4"	x 3-7/8"	5
JHSB-9	3/16"	x 3-1/2"	x 2-5/16"	10	JHSB-24	27/64"	x 5-3/8"	x 3-15/16"	5
JHSB-10	13/64"	x 3-5/8"	x 2-7/16"	10	JHSB-25	7/16"	x 5-1/2"	x 4-1/16"	5
JHSB-11	7/32"	x 3-3/4"	x 2-1/2"	10	JHSB-26	29/64"	x 5-5/8"	x 4-3/16"	5
JHSB-12	15/64"	x 3-7/8"	x 2-5/8"	10	JHSB-27	15/32"	x 5-3/4"	x 4-5/16"	5
JHSB-13	1/4"	x 4"	x 2-3/4"	10	JHSB-28	31/64"	x 5-7/8"	x 4-3/8"	5
JHSB-14	17/64"	x 4-1/8"	x 2-7/8"	10	JHSB-29	1/2"	x 6"	x 4-1/2"	5
JHSB-15	9/32"	x 4-1/4"	x 2-15/16"	10					

Bulk packaging: Sizes 1/16" – 9/32" are 10 bits per bag. Other sizes 5 bits per bag

Sleeve Packaging

Cat No. Sleeve	Dia Ø	Total Length	Usable Length	Pkg/ Sleeve	Cat No. Sleeve	Dia Ø	Total Length	Usable Length	Pkg/ Sleeve
JHSB-1C	1/16"	x 1-7/8"	x 7/8"	1	JHSB-16C	19/64"	x 4-3/8"	x 3-1/16"	1
JHSB-2C	5/64"	x 2"	x 1"	1	JHSB-17C	5/16"	x 4-1/2"	x 3-3/16"	1
JHSB-3C	3/32"	x 2-1/4"	x 1-1/4"	1	JHSB-18C	21/64"	x 4-5/8"	x 3-5/16"	1
JHSB-4C	7/64"	x 2-5/8"	x 1-1/2"	1	JHSB-19C	11/32"	x 4-3/4"	x 3-7/16"	1
JHSB-5C	1/8"	x 2-3/4"	x 1-5/8"	1	JHSB-20C	23/64"	x 4-7/8"	x 3-1/2"	1
JHSB-6C	9/64"	x 2-7/8"	x 1-3/4"	1	JHSB-21C	3/8"	x 5"	x 3-5/8"	1
JHSB-7C	5/32"	x 3-1/8"	x 2"	1	JHSB-22C	25/64"	x 5-1/8"	x 3-3/4"	1
JHSB-8C	11/64"	x 3-1/4"	x 2-1/8"	1	JHSB-23C	13/32"	x 5-1/4"	x 3-7/8"	1
JHSB-9C	3/16"	x 3-1/2"	x 2-5/16"	1	JHSB-24C	27/64"	x 5-3/8"	x 3-15/16"	1
JHSB-10C	13/64"	x 3-5/8"	x 2-7/16"	1	JHSB-25C	7/16"	x 5-1/2"	x 4-1/16"	1
JHSB-11C	7/32"	x 3-3/4"	x 2-1/2"	1	JHSB-26C	29/64"	x 5-5/8"	x 4-3/16"	1
JHSB-12C	15/64"	x 3-7/8"	x 2-5/8"	1	JHSB-27C	15/32"	x 5-3/4"	x 4-5/16"	1
JHSB-13C	1/4"	x 4"	x 2-3/4"	1	JHSB-28C	31/64"	x 5-7/8"	x 4-3/8"	1
JHSB-14C	17/64"	x 4-1/8"	x 2-7/8"	1	JHSB-29C	1/2"	x 6"	x 4-1/2"	1
JHSB-15C	9/32"	x 4-1/4"	x 2-15/16"	1					

Sleeve packaging: 1 per sleeve

JOBBER TWIST DRILLS BLACK and GOLD 135° Heavy Duty



- Drills for “Heavy Duty Applications” in Steel.
 - 135 Degree Self Starting Split Point Eliminates Need for Center Punch.
 - High Quality M2 High Speed Steel.
 - Black and Gold Oxide Surface Treatment Allows Cooler\Cutting and Adds Lubricity
 - Ideal for Drilling Carbon or Alloy Steels.
 - Bulk packaged in Polybags, Individually in Vinyl Sleeves or Sets
- Imported**

Bulk Packaging

Cat No. Bulk	Dia Ø	Total Length	Usable Length	Pkg/ Bag	Cat No. Bulk	Dia Ø	Total Length	Usable Length	Pkg/ Bag
JHSGB-1	1/16"	x 1-7/8"	x 7/8"	10	JHSGB-16	19/64"	x 4-3/8"	x 3-1/16"	5
JHSGB-2	5/64"	x 2"	x 1"	10	JHSGB-17	5/16"	x 4-1/2"	x 3-3/16"	5
JHSGB-3	3/32"	x 2-1/4"	x 1-1/4"	10	JHSGB-18	21/64"	x 4-5/8"	x 3-5/16"	5
JHSGB-4	7/64"	x 2-5/8"	x 1-1/2"	10	JHSGB-19	11/32"	x 4-3/4"	x 3-7/16"	5
JHSGB-5	1/8"	x 2-3/4"	x 1-5/8"	10	JHSGB-20	23/64"	x 4-7/8"	x 3-1/2"	5
JHSGB-6	9/64"	x 2-7/8"	x 1-3/4"	10	JHSGB-21	3/8"	x 5"	x 3-5/8"	5
JHSGB-7	5/32"	x 3-1/8"	x 2"	10	JHSGB-22	25/64"	x 5-1/8"	x 3-3/4"	5
JHSGB-8	11/64"	x 3-1/4"	x 2-1/8"	10	JHSGB-23	13/32"	x 5-1/4"	x 3-7/8"	5
JHSGB-9	3/16"	x 3-1/2"	x 2-5/16"	10	JHSGB-24	27/64"	x 5-3/8"	x 3-15/16"	5
JHSGB-10	13/64"	x 3-5/8"	x 2-7/16"	10	JHSGB-25	7/16"	x 5-1/2"	x 4-1/16"	5
JHSGB-11	7/32"	x 3-3/4"	x 2-1/2"	10	JHSGB-26	29/64"	x 5-5/8"	x 4-3/16"	5
JHSGB-12	15/64"	x 3-7/8"	x 2-5/8"	10	JHSGB-27	15/32"	x 5-3/4"	x 4-5/16"	5
JHSGB-13	1/4"	x 4"	x 2-3/4"	10	JHSGB-28	31/64"	x 5-7/8"	x 4-3/8"	5
JHSGB-14	17/64"	x 4-1/8"	x 2-7/8"	10	JHSGB-29	1/2"	x 6"	x 4-1/2"	5
JHSGB-15	9/32"	x 4-1/4"	x 2-15/16"	10					

Bulk packaging: Sizes 1/16" – 9/32" are 10 bits per bag. Other sizes 5 bits per bag

Sleeve Packaging

Cat No. Sleeve	Dia Ø	Total Length	Usable Length	Pkg/ Sleeve	Cat No. Sleeve	Dia Ø	Total Length	Usable Length	Pkg/ Sleeve
JHSGB-1C	1/16"	x 1-7/8"	x 7/8"	1	JHSGB-16C	19/64"	x 4-3/8"	x 3-1/16"	1
JHSGB-2C	5/64"	x 2"	x 1"	1	JHSGB-17C	5/16"	x 4-1/2"	x 3-3/16"	1
JHSGB-3C	3/32"	x 2-1/4"	x 1-1/4"	1	JHSGB-18C	21/64"	x 4-5/8"	x 3-5/16"	1
JHSGB-4C	7/64"	x 2-5/8"	x 1-1/2"	1	JHSGB-19C	11/32"	x 4-3/4"	x 3-7/16"	1
JHSGB-5C	1/8"	x 2-3/4"	x 1-5/8"	1	JHSGB-20C	23/64"	x 4-7/8"	x 3-1/2"	1
JHSGB-6C	9/64"	x 2-7/8"	x 1-3/4"	1	JHSGB-21C	3/8"	x 5"	x 3-5/8"	1
JHSGB-7C	5/32"	x 3-1/8"	x 2"	1	JHSGB-22C	25/64"	x 5-1/8"	x 3-3/4"	1
JHSGB-8C	11/64"	x 3-1/4"	x 2-1/8"	1	JHSGB-23C	13/32"	x 5-1/4"	x 3-7/8"	1
JHSGB-9C	3/16"	x 3-1/2"	x 2-5/16"	1	JHSGB-24C	27/64"	x 5-3/8"	x 3-15/16"	1
JHSGB-10C	13/64"	x 3-5/8"	x 2-7/16"	1	JHSGB-25C	7/16"	x 5-1/2"	x 4-1/16"	1
JHSGB-11C	7/32"	x 3-3/4"	x 2-1/2"	1	JHSGB-26C	29/64"	x 5-5/8"	x 4-3/16"	1
JHSGB-12C	15/64"	x 3-7/8"	x 2-5/8"	1	JHSGB-27C	15/32"	x 5-3/4"	x 4-5/16"	1
JHSGB-13C	1/4"	x 4"	x 2-3/4"	1	JHSGB-28C	31/64"	x 5-7/8"	x 4-3/8"	1
JHSGB-14C	17/64"	x 4-1/8"	x 2-7/8"	1	JHSGB-29C	1/2"	x 6"	x 4-1/2"	1
JHSGB-15C	9/32"	x 4-1/4"	x 2-15/16"	1					

Sleeve packaging: 1 per sleeve

JOBBER TWIST DRILLS COBALT 135° High Speed



- Designed to Withstand Heat when Drilling Stainless Steel and other Hard Abrasive Materials.
- 135 Degree Self Starting Split Point Eliminates Need for Center Punch.
- High Quality M35 High Speed Steel (Rockwell Hardness 66 - 68).
- Gold Oxide Surface Treatment Allows for Cooler Cutting and Adds Lubricity.
- Bulk packaged in Polybags, Individually in Vinyl Sleeves or Sets.

Imported

Bulk Packaging

Cat No. Bulk	Dia Ø	Total Length	Usable Length	Pkg/ Bag	Cat No. Bulk	Dia Ø	Total Length	Usable Length	Pkg/ Bag
JHSCB-1	1/16" x	1-7/8" x	7/8"	10	JHSCB-16	19/64" x	4-3/8" x	3-1/16"	5
JHSCB-2	5/64" x	2" x	1"	10	JHSCB-17	5/16" x	4-1/2" x	3-3/16"	5
JHSCB-3	3/32" x	2-1/4" x	1-1/4"	10	JHSCB-18	21/64" x	4-5/8" x	3-5/16"	5
JHSCB-4	7/64" x	2-5/8" x	1-1/2"	10	JHSCB-19	11/32" x	4-3/4" x	3-7/16"	5
JHSCB-5	1/8" x	2-3/4" x	1-5/8"	10	JHSCB-20	23/64" x	4-7/8" x	3-1/2"	5
JHSCB-6	9/64" x	2-7/8" x	1-3/4"	10	JHSCB-21	3/8" x	5" x	3-5/8"	5
JHSCB-7	5/32" x	3-1/8" x	2"	10	JHSCB-22	25/64" x	5-1/8" x	3-3/4"	5
JHSCB-8	11/64" x	3-1/4" x	2-1/8"	10	JHSCB-23	13/32" x	5-1/4" x	3-7/8"	5
JHSCB-9	3/16" x	3-1/2" x	2-5/16"	10	JHSCB-24	27/64" x	5-3/8" x	3-15/16"	5
JHSCB-10	13/64" x	3-5/8" x	2-7/16"	10	JHSCB-25	7/16" x	5-1/2" x	4-1/16"	5
JHSCB-11	7/32" x	3-3/4" x	2-1/2"	10	JHSCB-26	29/64" x	5-5/8" x	4-3/16"	5
JHSCB-12	15/64" x	3-7/8" x	2-5/8"	10	JHSCB-27	15/32" x	5-3/4" x	4-5/16"	5
JHSCB-13	1/4" x	4" x	2-3/4"	10	JHSCB-28	31/64" x	5-7/8" x	4-3/8"	5
JHSCB-14	17/64" x	4-1/8" x	2-7/8"	10	JHSCB-29	1/2" x	6" x	4-1/2"	5
JHSCB-15	9/32" x	4-1/4" x	2-15/16"	10					

Bulk packaging: Sizes 1/16" – 9/32" are 10 bits per bag. Other sizes 5 bits per bag

Sleeve Packaging

Cat No. Sleeve	Dia Ø	Total Length	Usable Length	Pkg/ Sleeve	Cat No. Sleeve	Dia Ø	Total Length	Usable Length	Pkg/ Sleeve
JHSCB-1C	1/16" x	1-7/8" x	7/8"	1	JHSCB-16C	19/64" x	4-3/8" x	3-1/16"	1
JHSCB-2C	5/64" x	2" x	1"	1	JHSCB-17C	5/16" x	4-1/2" x	3-3/16"	1
JHSCB-3C	3/32" x	2-1/4" x	1-1/4"	1	JHSCB-18C	21/64" x	4-5/8" x	3-5/16"	1
JHSCB-4C	7/64" x	2-5/8" x	1-1/2"	1	JHSCB-19C	11/32" x	4-3/4" x	3-7/16"	1
JHSCB-5C	1/8" x	2-3/4" x	1-5/8"	1	JHSCB-20C	23/64" x	4-7/8" x	3-1/2"	1
JHSCB-6C	9/64" x	2-7/8" x	1-3/4"	1	JHSCB-21C	3/8" x	5" x	3-5/8"	1
JHSCB-7C	5/32" x	3-1/8" x	2"	1	JHSCB-22C	25/64" x	5-1/8" x	3-3/4"	1
JHSCB-8C	11/64" x	3-1/4" x	2-1/8"	1	JHSCB-23C	13/32" x	5-1/4" x	3-7/8"	1
JHSCB-9C	3/16" x	3-1/2" x	2-5/16"	1	JHSCB-24C	27/64" x	5-3/8" x	3-15/16"	1
JHSCB-10C	13/64" x	3-5/8" x	2-7/16"	1	JHSCB-25C	7/16" x	5-1/2" x	4-1/16"	1
JHSCB-11C	7/32" x	3-3/4" x	2-1/2"	1	JHSCB-26C	29/64" x	5-5/8" x	4-3/16"	1
JHSCB-12C	15/64" x	3-7/8" x	2-5/8"	1	JHSCB-27C	15/32" x	5-3/4" x	4-5/16"	1
JHSCB-13C	1/4" x	4" x	2-3/4"	1	JHSCB-28C	31/64" x	5-7/8" x	4-3/8"	1
JHSCB-14C	17/64" x	4-1/8" x	2-7/8"	1	JHSCB-29C	1/2" x	6" x	4-1/2"	1
JHSCB-15C	9/32" x	4-1/4" x	2-15/16"	1					

Sleeve packaging: 1 per sleeve

JOBBER TWIST DRILLS SILVER & DEMING - 1/2" Shank



- 135° Split Point M35 Steel
- Three machined flats on 1/2" shank for greater holding power
- Requires 1/2" capacity chuck
- For cutting cast iron, steel, steel forgings, stainless steel

Bulk Packaging

Cat No. Bulk	Dia Ø	Total Length	Usable Length	Pkg/ Bag	Cat No. Bulk	Dia Ø	Total Length	Usable Length	Pkg/ Bag
JHSCB-30	17/32"	6"	x 2-3/4"	3	JHSCB-42	29/32"	6"	x 2-3/4"	2
JHSCB-31	9/16"	6"	x 2-3/4"	3	JHSCB-43	15/16"	6"	x 2-3/4"	2
JHSCB-32	19/32"	6"	x 2-3/4"	3	JHSCB-44	31/32"	6"	x 2-3/4"	2
JHSCB-33	5/8"	6"	x 2-3/4"	3	JHSCB-45	1"	6"	x 2-3/4"	2
JHSCB-34	21/32"	6"	x 2-3/4"	3	JHSCB-46	1-1/16"	6"	x 2-3/4"	2
JHSCB-35	11/16"	6"	x 2-3/4"	3	JHSCB-47	1-1/8"	6"	x 2-3/4"	2
JHSCB-36	23/32"	6"	x 2-3/4"	3	JHSCB-48	1-3/16"	6"	x 2-3/4"	2
JHSCB-37	3/4"	6"	x 2-3/4"	3	JHSCB-49	1-1/4"	6"	x 2-3/4"	2
JHSCB-38	25/32"	6"	x 2-3/4"	3	JHSCB-50	1-5/16"	6"	x 2-3/4"	2
JHSCB-39	13/16"	6"	x 2-3/4"	3	JHSCB-51	1-3/8"	6"	x 2-3/4"	2
JHSCB-40	27/32"	6"	x 2-3/4"	3	JHSCB-52	1-7/16"	6"	x 2-3/4"	2
JHSCB-41	7/8"	6"	x 2-3/4"	2	JHSCB-53	1-1/2"	6"	x 2-3/4"	2



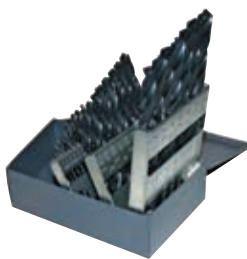
13 PC JOBBER SETS - Straight Shank

Cat. No.	Set	Sizes	Type	Drills	Point
JHSTD-S13	13 pc	1/16" → 1/4" x 64ths	Black Oxide	page 13	118°
JHSB-S13	13 pc	1/16" → 1/4" x 64ths	Black Oxide	page 14	135° S.P.
JHSGB-S13	13 pc	1/16" → 1/4" x 64ths	Black & Gold	page 15	135° S.P.
JHSCB-S13	13pc	1/16" → 1/4" x 64ths	Cobalt	page 16	135° S.P.



15 PC JOBBER SETS - Straight Shank

Cat. No.	Set	Sizes	Type	Drills	Point
JHSTD-S15	15 pc	1/16" → 1/2" x 32nds	Black Oxide	page 13	118°
JHSB-S15	15 pc	1/16" → 1/2" x 32nds	Black Oxide	page 14	135° S.P.
JHSGB-S15	15 pc	1/16" → 1/2" x 32nds	Black & Gold	page 15	135° S.P.
JHSCB-S15	15 pc	1/16" → 1/2" x 32nds	Cobalt	page 16	135° S.P.



29 PC JOBBER SETS - Straight Shank

Cat. No.	Set	Sizes	Type	Drills	Point
JHSTD-S29	29 pc	1/16" → 1/2" x 64ths	Black Oxide	page 13	118°
JHSB-S29	29 pc	1/16" → 1/2" x 64ths	Black Oxide	page 14	135° S.P.
JHSGB-S29	29 pc	1/16" → 1/2" x 64ths	Black & Gold	page 15	135° S.P.
JHSCB-S29	29 pc	1/16" → 1/2" x 64ths	Cobalt	page 16	135° S.P.



510 PC Dispenser Contains:

- 20- 1/16" 20- 5/64" 50- 3/32" 20- 7/64" 70- 1/8"
- 20- 9/64" 30- 5/32" 20- 11/64" 50- 3/16" 20- 13/64"
- 20- 7/32" 10- 15/64" 60- 1/4" 10- 17/64" 10- 9/32"
- 5- 19/64" 10- 5/16" 5- 21/64" 5- 11/32" 5- 23/64"
- 10- 3/8" 5- 25/64" 5- 13/32" 5- 27/64" 5- 7/16"
- 5- 29/64" 5- 15/32" 5- 31/64" 5- 1/2"

This sturdy merchandiser holds all 29 jobber size drill bits all in one place. Heavy duty steel construction with clear cover will fit neatly on any counter. Lock & key included.



510 PC JOBBER COUNTERTOP DISPENSER

Cat. No.	Set	Sizes	Type	Drills	Point
DISP-118° BLACK DISPENSER	510 pc	1/16" → 1/2" x 64ths	Black Oxide	page 13	118°
DISP-135° BLACK DISPENSER	510 pc	1/16" → 1/2" x 64ths	Black Oxide	page 14	135° S.P.
DISP-BLACK/GOLD DISPENSER	510 pc	1/16" → 1/2" x 64ths	Black & Gold	page 15	135° S.P.
DISP-COBALT DISPENSER	510 pc	1/16" → 1/2" x 64ths	Cobalt	page 16	135° S.P.

86 PC High Speed Drill Display Contains:

- 6- 1/16" 6- 3/32" 6- 1/8" 6- 9/64" 6- 5/32"
- 6- 11/64" 6- 3/16" 6- 7/32" 6- 1/4" 4- 17/64"
- 4- 9/32" 4- 5/16" 4- 11/32" 4- 3/8" 3- 13/32"
- 3- 7/16" 3- 15/32" 3- 1/2"

This 18 hook waterfall style display holds the most popular high speed jobber length drill bits in a very compact space. Each individually packaged and UPC coded.



86 PC HIGH SPEED DRILL BIT DISPLAY

Cat. No.	Set	Sizes	Type	Drills	Point
DISP-JHSTD18	86 pc	See chart above	Black Oxide	page 13	118°
DISP-JHSB18	86 pc	See chart above	Black Oxide	page 14	135° S.P.
DISP-JHSGB18	86 pc	See chart above	Black & Gold	page 15	135° S.P.
DISP-JHSCB18	86 pc	See chart above	Cobalt	page 16	135° S.P.



SUPER HIGH SPEED CARBIDE TIPPED DRILL BITS



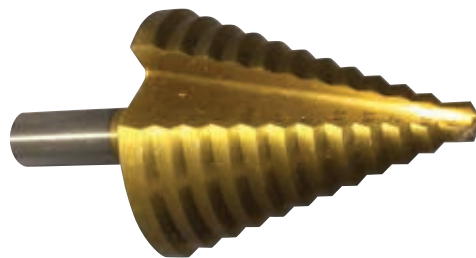
Professional's bit for cutting cast iron, hardened steel and other exotic metals

- Diamond ground cutting edge on the carbide tip for exact tolerance.
- Drill body is made from alloy speed steel.
- Carbide tip ground to 120 degree point.
- Recommended for use in drill presses, lathes, and hand held drills that can be steadied.
- Cooling fluids recommended for best results.

Catalog # Sleeve of 1	Dia Ø		Total Length
JHSS-1	5/64"	x	2"
JHSS-2	3/32"	x	2-1/4"
JHSS-3	7/64"	x	2-5/8"
JHSS-4	1/8"	x	2-3/4"
JHSS-5	9/64"	x	2-7/8"
JHSS-6	5/32"	x	3-1/8"
JHSS-7	11/64"	x	3-1/4"
JHSS-8	3/16"	x	3-1/2"
JHSS-9	13/64"	x	3-5/8"
JHSS-10	7/32"	x	3-3/4"
JHSS-11	15/64"	x	3-7/8"
JHSS-12	1/4"	x	4"
JHSS-13	9/32"	x	4-1/4"
JHSS-14	5/16"	x	4-1/2"
JHSS-15	11/32"	x	4-3/4"
JHSS-16	3/8"	x	5"
JHSS-17	13/32"	x	5-1/4"
JHSS-18	7/16"	x	5-1/2"
JHSS-19	15/32"	x	5-3/4"
JHSS-20	1/2"	x	6"

TITANIUM STEP DRILLS

- Self-Starting point - Requires no pilot hole.
- Balanced double flute eliminates chatter and vibration for clean, burr free holes.
- Drills clean accurate holes in thin metal (up to 1/8"); sheet metal, ducts, steel, copper, brass, aluminum, plastic, plexiglass, wood, veneers, vinyl siding, plasterboard, PVC, stainless steel, cast iron.



Catalog #	Steps	Shank	Description
JHTSP-1	6	1/4"	3/16", 1/4", 5/16", 3/8", 7/16", 1/2"
JHTSP-2	13	1/4"	1/8", 5/32", 3/16", 7/32", 1/4", 9/32", 5/16", 11/32", 3/8", 13/32", 7/16", 15/32", 1/2"
JHTSP-3	3	3/8"	1/4", 7/8", 1-1/8"
JHTSP-4	9	3/8"	1/4", 5/16", 3/8", 7/16", 1/2", 9/16", 5/8", 11/16", 3/4"
JHTSP-5	12	1/4"	3/16", 1/4", 5/16", 3/8", 7/16", 1/2", 9/16", 5/8", 11/16", 3/4", 13/16", 7/8"
JHTSP-6	1	3/8"	7/8" Hole for 1/2" conduit
JHTSP-7	8	3/8"	9/16", 5/8", 11/16", 3/4", 13/16", 7/8", 15/16", 1"
JHTSP-8	5	3/8"	7/8", 1-1/8", 1-7/32", 1-1/4", 1-3/8"



WOOD SPADE BIT WITH ANGLED SPURS

Wood Spade Bit Standard

Wood Spade Bit Extra Long

Catalog #	Dia Ø	Total Length	Catalog #	Dia Ø	Total Length
WS06-02	1/4"	x 6"	WS16-02	1/4"	x 16"
WS06-04	5/16"	x 6"	WS16-04	3/8"	x 16"
WS06-06	3/8"	x 6"	WS16-08	1/2"	x 16"
WS06-08	7/16"	x 6"	WS16-10	5/8"	x 16"
WS06-10	1/2"	x 6"	WS16-12	3/4"	x 16"
WS06-12	9/16"	x 6"	WS16-14	1"	x 16"
WS06-14	5/8"	x 6"			
WS06-16	11/16"	x 6"			
WS06-18	3/4"	x 6"			
WS06-20	13/16"	x 6"			
WS06-22	7/8"	x 6"			
WS06-24	15/16"	x 6"			
WS06-26	1"	x 6"			
WS06-28	1-1/8"	x 6"			
WS06-30	1-1/4"	x 6"			
WS06-32	1-3/8"	x 6"			
WS06-34	1-1/2"	x 6"			

- Spurs angled to provide a cleaner cut.
- Designed to reduce binding and drive through wood knots.
- Heat treated for heavy duty construction grade long life.
- Size marked on each bit.
- Packaged 1 per sleeve.

Spurs



HEAVY DUTY SHIP AUGER BITS

Ship Auger Bit - Short

Ship Auger Bit - Long

Catalog #	Dia Ø	Total Length	Catalog #	Dia Ø	Total Length
WSA07-02	5/16"	x 7-1/2"	WSA18-02	5/16"	x 18"
WSA07-04	5/8"	x 7-1/2"	WSA18-04	3/8"	x 18"
WSA07-06	11/16"	x 7-1/2"	WSA18-06	7/16"	x 18"
WSA07-08	3/4"	x 7-1/2"	WSA18-08	1/2"	x 18"
WSA07-10	13/16"	x 7-1/2"	WSA18-10	9/16"	x 18"
WSA07-12	7/8"	x 7-1/2"	WSA18-12	5/8"	x 18"
WSA07-14	15/16"	x 7-1/2"	WSA18-14	11/16"	x 18"
WSA07-16	1"	x 7-1/2"	WSA18-16	3/4"	x 18"
WSA07-18	1-1/8"	x 7-1/2"	WSA18-18	13/16"	x 18"
WSA07-20	1-1/4"	x 7-1/2"	WSA18-20	7/8"	x 18"
WSA07-22	1-1/2"	x 7-1/2"	WSA18-22	15/16"	x 18"
			WSA18-24	1"	x 18"
			WSA18-28	1-1/8"	x 18"
			WSA18-30	1-1/4"	x 18"
			WSA18-32	1-3/8"	x 18"
			WSA18-34	1-1/2"	x 18"



- Designed for faster cuts with a deep relief angle that removes material more quickly.
- Hardened, heavy duty, self feeding screw tip designed for wear resistant longer life.
- Designed for easy back out.
- Packaged 1 per tube.



WOOD SPADE Merchandiser

Cat. No.: DISP-WOOD SPADE
16" Wire Display with 8 hooks

6 pc.	1/4" x 6"
6 pc.	1/2" x 6"
6 pc.	5/8" x 6"
6 pc.	3/4" x 6"
6 pc.	7/8" x 6"
6 pc.	1" x 6"
6 pc.	1-1/4" x 6"
6 pc.	1-1/2" x 6"

WOOD AUGER Merchandiser

Cat. No.: DISP-WOOD AUGER
16" Wire Display with 8 hooks

3 pc.	5/8" x 7-1/2"
3 pc.	3/4" x 7-1/2"
3 pc.	1" x 7-1/2"
3 pc.	1-1/2" x 7-1/2"
3 pc.	3/8" x 18"
3 pc.	1/2" x 18"
2 pc.	1" x 18"
2 pc.	1-1/4" x 18"

HIGH SPEED STEEL BELL HANGER



- Also known as installer bits, these bits are designed for small wire installation applications.
- Telephone, security alarm, cable, network installers, electricians all use these drill bits.
- Each bit has a fish hole in the flute for pulling wire.
- Designed for cutting through wood, plaster or drywall.
- Packaged 1 per sleeve.

Catalog #	Dia Ø		Total Length
BSW-200	1/4"	x	12"
BSW-205	1/4"	x	18"
BSW-210	1/4"	x	24"
BSW-300	5/16"	x	12"
BSW-305	5/16"	x	18"
BSW-400	3/8"	x	12"
BSW-405	3/8"	x	18"
BSW-410	3/8"	x	24"
BSW-600	1/2"	x	12"
BSW-605	1/2"	x	24"

FLEX SHANK BELL HANGER - AUGER STYLE



- Auger tipped flex shank bits feature a double fluted taper auger head with a self feeding lead screw point, fish hole, and special flexible shank.
- The shank is designed with a flex memory retention and maximum torque transmission.
- Packaged 1 per tube.

Catalog #	Dia Ø		Total Length	Shank
BHFA-425	3/8"	x	54"	3/16"
BHFA-430	3/8"	x	72"	3/16"
BHFA-525	1/2"	x	54"	3/16"
BHFA-530	1/2"	x	72"	3/16"
BHFA-625	9/16"	x	54"	1/4"
BHFA-630	9/16"	x	72"	1/4"
BHFA-725	3/4"	x	54"	1/4"
BHFA-730	3/4"	x	72"	1/4"
FLEX-BEND	Bending Tool			





CONCRETE SCREWS

Hexhead Concrete Screws

Cat# w/drill	Dia Ø	Total Length	Cat# no drill
CS-1	3/16"	x 1-1/4"	CS-1NB
CS-2	3/16"	x 1-3/4"	CS-2NB
CS-3	3/16"	x 2-1/4"	CS-3NB
CS-4	3/16"	x 2-3/4"	CS-4NB
CS-5	3/16"	x 3-1/4"	CS-5NB
CS-6	3/16"	x 3-3/4"	CS-6NB
CS-7	3/16"	x 4"	CS-7NB
CS-8	1/4"	x 1-1/4"	CS-8NB
CS-9	1/4"	x 1-3/4"	CS-9NB
CS-10	1/4"	x 2-1/4"	CS-10NB
CS-11	1/4"	x 2-3/4"	CS-11NB
CS-12	1/4"	x 3-1/4"	CS-12NB
CS-13	1/4"	x 3-3/4"	CS-13NB
CS-14	1/4"	x 4"	CS-14NB
CS-15	1/4"	x 5"	CS-15NB
CS-16	1/4"	x 6"	CS-16NB



Flathead Concrete Screws

Cat# w/drill	Dia Ø	Total Length	Cat# no drill
CS-17	3/16"	x 1-1/4"	CS-17NB
CS-18	3/16"	x 1-3/4"	CS-18NB
CS-19	3/16"	x 2-1/4"	CS-19NB
CS-20	3/16"	x 2-3/4"	CS-20NB
CS-21	3/16"	x 3-1/4"	CS-21NB
CS-22	3/16"	x 3-3/4"	CS-22NB
CS-23	3/16"	x 4"	CS-23NB
CS-24	1/4"	x 1-1/4"	CS-24NB
CS-25	1/4"	x 1-3/4"	CS-25NB
CS-26	1/4"	x 2-1/4"	CS-26NB
CS-27	1/4"	x 2-3/4"	CS-27NB
CS-28	1/4"	x 3-1/4"	CS-28NB
CS-29	1/4"	x 3-3/4"	CS-29NB
CS-30	1/4"	x 4"	CS-30NB
CS-31	1/4"	x 5"	CS-31NB
CS-32	1/4"	x 6"	CS-32NB



CONCRETE SCREW INSTALLATION KIT

CST-1 ENTIRE KIT



CONCRETE SCREW DRILL BITS & SDS/HEX ANCHOR DRIVE BITS



Catalog #	Dia Ø	Total Length	Usable Length
JHSDS-HEX1	5/32"	x 5"	x 3"
JHSDS-HEX2	5/32"	x 7"	x 5"
JHSDS-HEX3	3/16"	x 5"	x 3"
JHSDS-HEX4	3/16"	x 7"	x 5"

Catalog # 1 Piece	Catalog # 10 Pieces	Catalog # 100 Pieces	Dia Ø	Total Length
JRCSD-1	JRCSD-1X	JRCSD-1C	5/32"	x 3-1/2"
JRCSD-2	JRCSD-2X	JRCSD-2C	5/32"	x 4-1/2"
JRCSD-3	JRCSD-3X	JRCSD-3C	5/32"	x 5-1/2"
JRCSD-4	JRCSD-4X	JRCSD-4C	3/16"	x 3-1/2"
JRCSD-5	JRCSD-5X	JRCSD-5C	3/16"	x 4-1/2"
JRCSD-6	JRCSD-6X	JRCSD-6C	3/16"	x 5-1/2"
JRCSD-7	JRCSD-7X	JRCSD-7C	3/16"	x 6-1/2"
JRCSD-8	JRCSD-8X	JRCSD-8C	3/16"	x 7-1/2"

Rotary Hammer Cross Reference For SDS Plus

BOSCH	DEWALT	HILTI	HITACHI	MAKITA	MILWAUKEE	METABO
11207	D25012K	GP-22	DH150	BHR200SAE	5302	6010
11210	D25023K	TE 1	DH15DVBK	BHR202Z	5303	6011
11211	D25052K	TE 10A	DH18DBLP4	BHR241	5320	6015
11212	D25101K	TE 12	DH18DL	HR1830F	5324	6018
11215	D25103K	TE 12S	DH20DV	HR2010	5365	6020
11524	D25111K	TE 14	DH22PB	HR2432	5366	6021
11213RK	D25113K	TE 15ME	DH22PG	HR2450F	5368	6024
11221DVS	D25123K	TE 16	DH22VB	HR2455	5369	6026
11222EVS/G	D25133K	TE 16-C	DH22VD	HR2455X	0756-22	6028
11224VSR/C	D25133K	TE 16M	DH24PB	HR2470F	2412-20	BHA18
11225VSR/H	D25201K	TE 18	DH24PB2	HR2475	2412-22XC	BHE 22
11228VSR	D25203K	TE 2	DH24PBE	HR2475X2	2416-20	BHE 2243
11234VSR	D25211K	TE 22P	DH24PC	HR2611F	2605-20	BHE 2444
11236VS	D25213K	TE 24	DH24PC2	HR2621	2605-22	BHE 6015 S-R-L
11239VS	D25223K	TE 25	DH24PC3	HR2641X1	2612-21	BHE24
11250VSR/D	D25260K	TE 2-M	DH24PE	HR2651	2612-22	BHE2644
11253VSR	D25262K	TE 2-S	DH24PF3	HR2661	2712-22	BHE2644
11255VSR (HDC)	D25263K	TE 30	DH25DAL	HR2811F	2715-20	BHE6015
11258VSR	D25303K	TE 30-AVR	DH25PB	HR2811FX	5262-21	BHE-D 24
11536C-1(2)	D25304K	TE 3-C	DH26PF	HR3210C	5263-21	KHA 18 LTX
11536VSR	D25313K	TE 5	DH28PC	HRH01	5268-21	KHA 18 LTX BL 24
GBH2-26	D25314K	TE 5-A	DH28PD	HRH01Z2	5359-21	KHA 36 LTX
GBH2-28L	D25323K	TE 6-A	DH28PFY	LXRH011	5360-21	KHA 36-18 LTX 32
GBH24VRE	D25324K	TE 6-C	DH28PX	LXRH01Z	5362-6	KHE 32
GBH36VEC	D25404K	TE 6-S	DH30PC	XRH01Z	5363-21	KHE2444
GBH36VF	D25413K	TE 7-C	DH30PC2	XRH01ZVX	5366-21	KHE2644
GBH18V-20N	D25416K		H25V	XRH03Z	5368-21	KHE2851
GBH18V-26	DC212B		H30PV	XRH04	5368-22	KHE-32
RH228VC	DC212KA		VR16	XRH04Z	5369-21	KHE3250
RH328VC/Q	DC212KL		VRT-22 A	XRH05Z	5383-21	KHE3251
RH432VC/Q	DC223KA			XRH06RBX		KHE3650
RHH181-1	DC233KL			XRH06ZB		KHE-D 24
RHH181BL	DCH133B					KHE-D 26
RHS181B	DCH133M2					KHE-D 28
RHS181K	DCH213L2					UHE 22
	DCH253M2					UHE 28
	DCH273B					UHE2250
	DCH273P2					UHE2450
	DCH293B					UHE2650
	DCH293R2					UHE2850
	DCH293X2					UHEV 2860-2
	DW005K-2					
	DW999K-2					

Rotary Hammer Cross Reference For SDS Max

BOSCH	DEWALT	HILTI	HITACHI	MAKITA	MILWAUKEE	METABO
11216	D25500K	TE 2-A22	DH38MS	HM1100C	5308	6045
11240	D25501K	TE 30-A36	DH40MA	HM1202C	5315-21	BHE 6045 S
11240	D25600K	TE 40-AVR	DH40MB	HR4000C	5315-22	KHE 5-40
11388	D25601K	TE 46	DH40MC	HR4001C	5317-21	KHE 55
11213EVS	D25602K	TE 4-A22	DH40MEY	HR4002	5339-21	KHE 56
11214EVS	D25603K	TE 50S	DH40MR	HR4010C	5342-21	KHE 75
11223EVS	D25604K	TE 50-AVR	DH40MRY	HR4013C	5346-21	KHE 76
11227EVS	D25701K	TE 52	DH45ME	HR4500C	5426-21	KHE 96
11230EVS	D25712K	TE 54	DH45MEY	HR4510C	5446-21	MHE 65
11231EVS	D25721K	TE 55	DH45MR	HR5001C		
11241EVS	D25723K	TE 56	DH50MB	HR5210C		
11245EVS	D25730K	TE 56-ATC	DH50MRY	HR5212C		
11263EVS	D25733K	TE 60	DH52ME	HR5212C		
11264EVS	D25761K	TE 60-ATC/AVR	DH52MEY	RH07PTU		
11311EVS	D25762K	TE 60-AVR	H41MB	RH07ZKU		
11312E	D25763K	TE 6-A22 (04)	H45MRY	XRH07PTU		
11316EVS	D25773K	TE 6-A36	H60HR	XRH07ZKU		
11318EVS	D25830K	TE 706	H60MRV			
RH1255VC	DCH481X2	TE 706-AVR				
RH540M	DCH733B	TE 70-AVR				
RH745	DCH733X2	TE 72				
RH850VC		TE 74				
		TE 75				
		TE 76				
		TE 76-ATC				
		TE 76P				
		TE 76P-ATC				
		TE 92				
		TE80-ATC/AVR				
		TE-F-52				
		TE-F-60				
		TE-F-72				
		TE-F-92				
		TE-Y-54				
		TE-Y-55				
		TE-Y-75				

Rotary Hammer Cross Reference For Spline

BOSCH	DEWALT	HILTI	HITACHI	MAKITA	MILWAUKEE	METABO
11202	D25550K	N/A	DH38YE2	HM0810B	48	1129
11203	D25551K		DH38YF	HR3851	5309	KHE-S 55
11204	D25553K		DH40FA	HR4040C	5311	RH66
11205	D25650K		DH40FB	HR4041C	5316	RH99
11209	D25651K		DH40FR	HR5000	5317	RH99X
11214			DS50SBK		5341	
11219					5343	
11219					5344	
11220					5345	
11220					5347	
11232					5348	
11233					5353	
11247					5316-21	
11314					5319-21	
11248EVS					5318-21	
11265EVS					5321-21	
RH540S					5340-21	
					5345-21	



Chiseling Hammer Cross Reference For SDS Plus

BOSCH		DEWALT		HILTI		HITACHI		MAKITA		METABO	MILWAUKEE
11207	11234VSR	514K	D25304K	GP 22	TE 30	DH18DL	BHR200SAE	HR2450F	6010		5262-21
11210	11236VS	523K	D25313K	TE 1	TE 30-A36	DH18DLP4	BHR214	HR2455	6018		5263-21
11211	11239VS	557K	D25323K	TE 104	TE 30C	DH20DV	BHR240	HR2455X	6020		5302
11212	11250VSR	566K	D25324K	TE 10A	TE 30C-AVR	DH22PG	BHR241Z	HR2470F	6024		5303
11213	11250VSRD	567K	D25330K	TE 12	TE 3-C	DH22VB	BHR261	HR2475	6026		5312
11215	11253VSR	D25012K	D25404K	TE 12S	TE 40-AVR	DH22VD	HK0500	HR2475X2	BHA18LT		5320
11221	11255VSR	D25023K	DC212B	TE 14	TE 4-A18	DH24PB	HK0500	HR2511	BHA18LTX		5324
11222	11258VSR	D25101K	DC212KL	TE 15	TE 4-A22	DH24PB3	HR160	HR2611F	BHE 2243		5362
11224	11320VS	D25103K	DC223KA	TE 15C	TE 5	DH24PC	HR1821	HR2621	BHE22		5365
11228	11536C-1	D25113K	DC233KL	TE 15ME	TE 5A	DH24PC3	HR1830F	HR2811F	BHE2444		5366
11236	11536C-2	D25123K	DCH213L2	TE 16	TE 6A	DH24PF3	HR2000	HR2811FX	BHE6015		5368
11524	11536VSR	D25201K	DW005K-2	TE 16C	TE 6A	DH25DAL	HR2010	HR3000C	BHE6015		5369
11221DVS	GBH18V-26	D25203K	DW562K	TE 16M	TE 6A-36-AVR	DH25PB	HR2400	HR3210	BHE-D24		0756-22
11222EVS	GBH2-26	D25213K	DW565K	TE 18	TE 6A-LI	DH28PC	HR2410	HR3210C	KHA18LTXBL24		2605-20
11222EVSG	RH228VC	D25223K	DW567K	TE 2	TE 6C	DH28PD	HR2420	HRH01	KHA36LTX		5268-21
11224VSR	RH328VCQ	D25263K	DW570K	TE 24	TE 6S	DH30PC	HR2431	HRH01ZX2	KHA36-18LTX32		5359-21
11224VSR	RH432VC	D25303K	DW999K-2	TE 25	TE 7	DH30PC2	HR2432	XRH04	KHA18LTX		5360-21
11225VSR	RH432VCQ			TE 2A	TE 7A	VR16	HR2445F	XRH05Z	KHA24		5361-20
11228VSR	RHH181			TE 2M	TE 7-C	VRT22	HR2450		KHA36		5361-24
				TE 2S					KHE2443		5362-6
									KHE32		5363-21
									KHE-D24		5366-21
									KHE-D26		5368-21
									KHE-D28		5368-22
									UHE22		5369-21
									UHE2650		5382-21
									UHE28		5383-21
											M12

Chiseling Hammer Cross Reference For SDS Max

BOSCH		DEWALT		HILTI		HITACHI		MAKITA		METABO	MILWAUKEE
11214EVS	11318EVS	541K		TE 40-AVR	TE 70-ATC-AVR	DH38MS	HM0860C	6045			5308
11216	11321EVS	545K		TE 42	TE 70-AVR	DH40MA	HM0870C	BH6045S			5313
11223	DH1020VC	D25133K		TE 50	TE 72	DH40MB	HM1100C	BHE6045			5313-21
11227	DH507	D25262K		TE 500	TE 74	DH40MC	HM1100S	BHE6045S			5313-51
11231	DH712VC	D25500K		TE 500-AVR	TE 75	DH40MEY	HM1111C	KHE 5-40			5314-21
11235	GBH10.DC	D25501K		TE 504	TE 76	DH40MR	HM1200C	KHE55			5315-21
11240	GBH11DE	D25600K		TE 505	TE 76-ATC	DH40MRY	HM1202C	KHE56			5315-22
11245	GBH38	D25601K		TE 50-AVR	TE 76P	DH40MT	HM1203C	KHE75			5317-21
11309	GBH5	D25602K		TE 52	TE 76P-ATC	DH45MR	HM1214C	KHE76			5338-21
11311	GBH5.40DCE	D25701K		TE 54	TE 80-ATC-AVR	DH50MRY	HR4000C	KHE96			5339-21
11312	GBH5.40DE	D25712K		TE 55	TE 92	DH50MT	HR4001C	MHE 5			5342-21
11313	GBH5CE	D25721K		TE 56	TE-F52	H41MB	HR4002C	MHE56			5346-21
11316	GBH5DCE	D25723K		TE 56-ATC	TE-F60	H45MA	HR4010C	MHE65			5426-21
11388	GBH7.45DE	D25762K		TE 60	TE-F72	H45MEY	HR4013C	MHE96			5446-21
11223EVS	GBH7DCE	D25830K		TE 60-ATC	TE-F92	H45MR	HR4500C				
11227EVS	GBH8.DCE	D25831K		TE 60-ATC-AVR	TE-Y504	H45MRY	HR4510C				
11230EVS	GBH8165DCE	D25890K		TE 70	TE-Y54	H60MA	HR5001C				
11231EVS	GSH10C	D25891K		TE 700-AVR	TE-Y55	H60MB	HR5000C				
11241EVS	GSH11E	D25899K		TE 704	TE-Y704	H60MEY	HR5210C				
11245EVS	GSH4	D25900K		TE 705	TE-Y705	H60MRV	HR5212C				
11263EVS	GSH5CE	D25901K		TE 706	TE-Y72		RH07PTU				
11264EVS	HS1917	DCH481		TE 706-AVR	TE-Y74		RH07ZKU				
11311EVS	RH1255VC	DW540K		TE 70-ATC	TE-Y75						
11312EVS	RH540M	DW541K									
11313EVS	RH745	DW545K									
11316EVS											

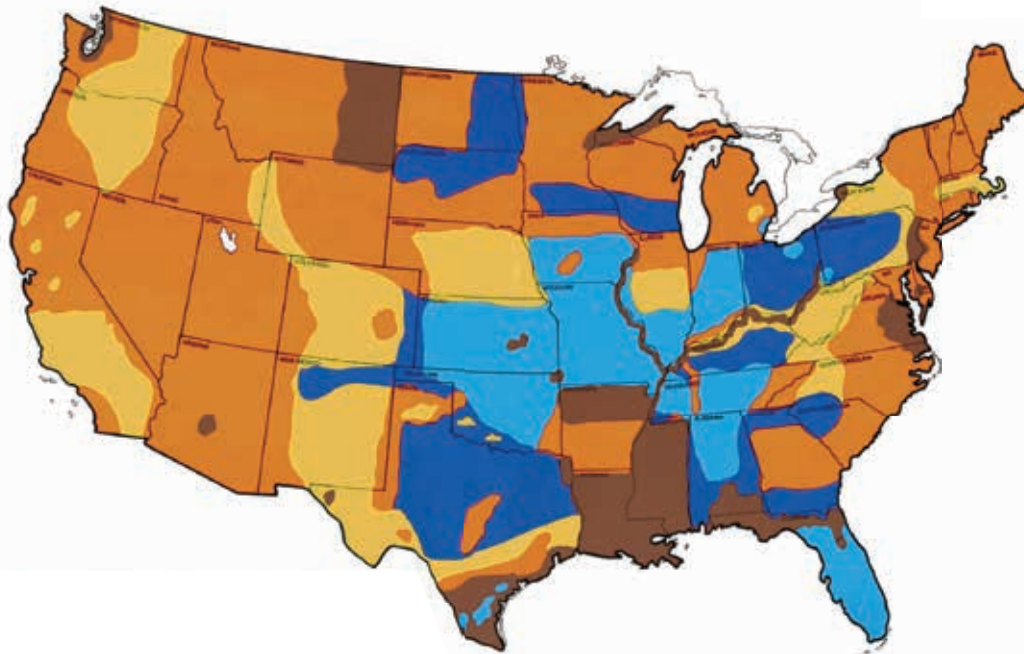
Chiseling Hammer Cross Reference For Spline

BOSCH	DEWALT	HILTI	HITACHI	MAKITA	METABO	MILWAUKEE	
11202	11247	530K	N/A	DH38YE	HM0810B	1129	47
11203	11248EVS	531K		DH38YE2	HM1140C	1130	48
11204	11265EVS	532K		DH38YF	HM1211B	1135	5309
11205	11306	533K		DH40FA	HR3520B	6030	5311
11206	11310	551K		DH40FB	HR3520EB	6040	5316
11208	11314	D25550K		DH40FR	HR3850B	6046	5334
11209	GBH7.45D	D25551K		DH45SB	HR3851	11295	5336
11213RK	GBH7.75DE	D25553K		DH50MB	HR4040C	11305	5341
11214	RH540S	D25650K		DH50SB	HR4041	11315	5343
11219	UBH10.5	D25651K		DH50SBK	HR4041C	BHE6030S	5344
11220	UBH12.5	D25850K		DS50SB	HR5000	KHE-S55	5345
11232	UBH6.35	D25851K			H45FRV	RH66	5347
11233	UBH6.35D	DW533K			RH99	RH99	5348
11233EVS	USH6				RH99X	RH99X	5352
11244E							5353
							5316-21
							5318-21
							5321-21
							5321-22
							5340-21
							5345-21
							5317

Chiseling Hammer Cross Reference For 3/4" Hex Demo

BOSCH	DEWALT	HILTI	HITACHI	MAKITA	METABO	MILWAUKEE
11305	D25940K	N/A	H55SC	HM1200B	N/A	5335
11317EVS	D25941K		H55SCK	HM1211B		5337-21
12312	DW558K					HM1242C
USH10						

AGGREGATE CLASSIFICATION MAP of the UNITED STATES



EXTRUDED ANCHORS



Advantages:

- Made from PVC.
- Expansion on the total surface and length of anchor.
- Three external fins prevent rotation.
- Profile ensures self-centering of the screw.
- High tensile loads in concrete and solid brick.
- Anchor protects the screw against corrosion.

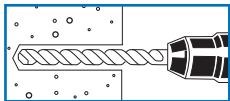


**B
U
L
K**

Color & Length	Drill Size	Screw / Lag Size	Catalog # 100 PC Box	Catalog # Bulk	Case Quantity
YELLOW 1"	5/32"	#4	ECTA-1HB	ECTA-1B	45,000
WHITE 3/4"	3/16"	#6	ECT-2HB	ECT-2B	40,000
WHITE 1"	3/16"	#6	ECTA-3HB	ECTA-3B	30,000
WHITE 1-1/2"	3/16"	#6	ECT-4HB	ECT-4B	20,000
RED 3/4"	15/64"	#8	ECT-5HB	ECT-5B	35,000
RED 1"	15/64"	#8	ECTA-6HB	ECTA-6B	24,000
RED 1-1/2"	15/64"	#8	ECTA-7HB	ECTA-7B	16,000
GREEN 1"	1/4"	#10	ECTA-8HB	ECTA-8B	19,000
GREEN 1-1/4"	1/4"	#10	ECTA-9HB	ECTA-9B	14,000
GREEN 1-1/2"	1/4"	#10	ECTA-10HB	ECTA-10B	12,000
GREEN 2"	1/4"	#10	ECT-11HB	ECT-11B	9,000
BLUE 1"	5/16"	#14 / 1/4"	ECTA-12HB	ECTA-12B	15,000
BLUE 1-1/2"	5/16"	#14 / 1/4"	ECTA-13HB	ECTA-13B	10,000
BLUE 2"	5/16"	#14 / 1/4"	ECT-14HB	ECT-14B	7,000
BLUE 2-1/4"	5/16"	#14 / 1/4"	ECT-15HB	ECT-15B	6,000
ORANGE 1"	3/8"	#16 / 5/16"	ECT-16HB	ECT-16B	7,500
ORANGE 1-1/2"	3/8"	#16 / 5/16"	ECT-17HB	ECT-17B	5,000
ORANGE 2"	3/8"	#16 / 5/16"	ECT-18HB	ECT-18B	3,750
ORANGE 2-1/2"	3/8"	#16 / 5/16"	ECTA-19HB	ECTA-19B	3,125
GRAY 1-1/2"	7/16"	#20 / 3/8"	ECT-20HB	ECT-20B	3,000
GRAY 2"	7/16"	#20 / 3/8"	ECT-21HB	ECT-21B	2,800
GRAY 2-1/2"	7/16"	#20 / 3/8"	ECTA-22HB	ECTA-22B	2,000
GRAY 3"	7/16"	#20 / 3/8"	ECT-23HB	ECT-23B	1,600
BLACK 2-1/2"	9/16"	7/16" & 1/2"	ECT-24HB	ECT-24B	1,300
BLACK 3-1/2"	9/16"	7/16" & 1/2"	ECT-25HB	ECT-25B	1,000

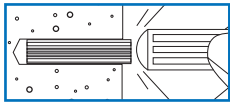
Installation

1



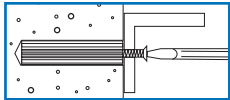
Drill hole with correct diameter and depth.

2



Blow hole clean of dust and material. Insert the anchor into the hole until it is flush with the surface of the base material.

3



Position the fixture. Insert the proper size screw through the fixture into the top of the anchor and tighten. Be sure the thread fully engages the anchor body.

**F
R
A
M
E
S**

Color & Length	Drill Size	Screw / Lag Size	Catalog # 4 Frames / Box	Catalog # Frame	Frames Per Box	Case
YELLOW 1"	5/32"	#4	ECTA-1HF	ECTA-1F	20	200
WHITE 3/4"	3/16"	#6	ECT-2HF	ECT-2F	40	800
WHITE 1"	3/16"	#6	ECTA-3HF	ECTA-3F	20	600
WHITE 1-1/2"	3/16"	#6	ECT-4HF	ECT-4F	20	400
RED 1"	15/64"	#8	ECTA-6HF	ECTA-6F	20	480
RED 1-1/2"	15/64"	#8	ECTA-7HF	ECTA-7F	20	320
GREEN 1"	1/4"	#10	ECTA-8HF	ECTA-8F	20	480
GREEN 1-1/4"	1/4"	#10	ECTA-9HF	ECTA-9F	20	400
GREEN 1-1/2"	1/4"	#10	ECTA-10HF	ECTA-10F	20	320
GREEN 2"	1/4"	#10	ECT-11HF	ECT-11F	10	240
BLUE 1"	5/16"	#14 / 1/4"	ECTA-12HF	ECTA-12F	20	360
BLUE 1-1/2"	5/16"	#14 / 1/4"	ECTA-13HF	ECTA-13F	20	240
BLUE 2"	5/16"	#14 / 1/4"	ECT-14HF	ECT-14F	10	180
ORANGE 1"	3/8"	#16 / 5/16"	ECT-16HF	ECT-16F	8	288
ORANGE 1-1/2"	3/8"	#16 / 5/16"	ECT-17HF	ECT-17F	4	200
ORANGE 2"	3/8"	#16 / 5/16"	ECT-18HF	ECT-18F	4	144
ORANGE 2-1/2"	3/8"	#16 / 5/16"	ECTA-19HF	ECTA-19F	4	120
GRAY 1-1/2"	7/16"	#20 / 3/8"	ECT-20HF	ECT-20F	8	160
GRAY 2"	7/16"	#20 / 3/8"	ECT-21HF	ECT-21F	4	112
GRAY 2-1/2"	7/16"	#20 / 3/8"	ECTA-22HF	ECTA-22F	4	96
GRAY 3"	7/16"	#20 / 3/8"	ECT-23HF	ECT-23F	4	80
BLACK* 2-1/2"	9/16"	7/16" & 1/2"	ECT-24HF	ECT-24F	4	80
BLACK* 3-1/2"	9/16"	7/16" & 1/2"	ECT-25HF	ECT-25F	4	60

* Black 2-1/2" & 3-1/2" have 12 pieces per frame.

EXTRUDED ANCHOR MERCHANDISERS

Advantages when using Extruded PVC Plastic Screw Anchors:

- Available in 8 diameters.
- Not Tapered - Ensure better contact.
- No Lip - Fixture mounts flush with surface.
- No fraying or splitting - Self Centering
- Cuts to special length
- Acid Resistant
- Does not turn in hole
- Usable in all drillable materials.
- Fills cavities inside drill hole.
- Coverage: #4 Screw through 1/2" Lag.
- No Lubricant needed
- Self lubricating PVC
- Requires smaller holes than metal anchors

Cat. #	Cards	Qty	Color and Length	Drill Size Required
EBF-1	20	25 pc	YELLOW 1" / Frame	5/32"
EBF-2	20	25 pc	WHITE 1" / Frame	3/16"
EBF-3	20	25 pc	RED 1" / Frame	15/64"
EBF-4	10	25 pc	RED 1-1/2" / Frame	15/64"
EBF-5	20	25 pc	GREEN 1" / Frame	1/4"
EBF-6	10	25 pc	GREEN 1-1/4" / Frame	1/4"
EBF-7	10	25 pc	GREEN 1-1/2" / Frame	1/4"
EBF-8	20	25 pc	BLUE 1" / Frame	5/16"
EBF-9	10	25 pc	BLUE 1-1/2" / Frame	5/16"
EBF-10	10	4 pc	ORANGE 2-1/2"	3/8"
EBF-11	10	4 pc	GRAY 2-1/2"	7/16"

Cat. #	Qty	Color and Length	Screw/Lag Included	Drill Size Required
EBP-1	12 pc	YELLOW 1"		5/32"
EBP-2	10 pc	WHITE 1"		3/16"
EBP-3	8 pc	RED 1"		15/64"
EBP-4	6 pc	GREEN 1"		1/4"
EBP-5	5 pc	GREEN 1-1/4"		1/4"
EBP-6	5 pc	GREEN 1-1/2"		1/4"
EBP-7	5 pc	BLUE 1"		5/16"
EBP-8	4 pc	BLUE 1-1/2"		5/16"
EBP-9	2 pc	ORANGE 2"		3/8"
EBP-10	2 pc	GRAY 2"		7/16"
EBP-11	12 pc	YELLOW 1"	12 PC - #4 x 1" screws	5/32"
EBP-12	10 pc	WHITE 1"	10 PC - #6 x 1" screws	3/16"
EBP-13	8 pc	RED 1"	8 PC - #8 x 1" screws	15/64"
EBP-14	6 pc	GREEN 1"	6 PC - #10 x 1" screws	1/4"
EBP-15	5 pc	GREEN 1-1/4"	5 PC - #10 x 1-1/2" screws	1/4"
EBP-16	5 pc	GREEN 1-1/2"	5 PC - #10 x 1-1/2" screws	1/4"
EBP-17	5 pc	BLUE 1"	5 PC - #14 x 1-1/4" screws	5/16"
EBP-18	4 pc	BLUE 1-1/2"	4 PC - #14 x 1-1/2" screws	5/16"
EBP-19	2 pc	ORANGE 2"	2 PC - 5/16" lags	3/8"
EBP-20	2 pc	GRAY 2"	2 PC - 3/8" lags	7/16"

10 cards each

Cat. No.: EBF-160
160 Cards



Cat. No.: EBP-200
200 Cards



HOLLOW WALL ANCHOR MERCHANDISERS

Cat. No.: HWA-190
190 Cards



Cat. #	Qty	Color and Length	Screws Included	Drill Size Required
CLA-1	10	BLUE 3/16" x 3/4"		3/16"
CLA-2	10	BLUE 3/16" x 7/8"		3/16"
CLA-3	10	BLUE 1/4" x 1"		1/4"
CLA-4	5	BLUE 5/16" x 1-3/8"		5/16"
CLA-5	10	BLUE 3/16" x 3/4"	10 PC - #6 x 1" screws	3/16"
CLA-6	10	BLUE 3/16" x 7/8"	10 PC - #8 x 1" screws	3/16"
CLA-7	10	BLUE 1/4" x 1"	10 PC - #10 x 1" screws	1/4"
CLA-8	5	BLUE 5/16" x 1-3/8"	5 PC - #14 x 1-1/2" scr.	5/16"
RIB-8	10	GRAY 3/16" x 7/8"	10 PC - #8 x 1" screws	3/16"
RIB-10	10	GRAY 1/4" x 1"	10 PC - #10 x 1" screws	1/4"
SRIB-8	10	YELLOW 3/16" x 1"	10 PC - #8 x 1" screws	3/16"
SRIB-10	10	YELLOW 1/4" x 1-1/4"	10 PC - #10 x 1" screws	1/4"
ERL-11	4	RED LIGHT ROSETT	4 PC - #6 x 2" screws	1/4"
ERL-12	4	RED LIGHT ROSETT	4 PC - #8 x 2" screws	1/4"
EBL-13	2	BLUE LIGHT ROSETT	2 PC - #10 x 2-1/2" scr.	5/16"
EBL-14	2	BLUE LIGHT ROSETT	2 PC - #12 x 2-1/2" scr.	5/16"
PTA-1	5	3/8" PLASTIC TOGGLE		3/8"
PTA-2	5	1/2" PLASTIC TOGGLE		3/8"
PTA-3	5	5/8" PLASTIC TOGGLE		3/8"

10 cards each

Cat. No.: ERA-100
100 Cards



Cat. #	Style
ERB-1	BLUE PANHEAD
ERB-2	BLUE SPACER
ERB-3	BLUE ROUND HOOK
ERB-4	BLUE STRAIGHT HOOK
ERB-5	BLUE SCREW EYE
ERR-6	RED PANHEAD
ERR-7	RED SPACER
ERR-8	RED ROUND HOOK
ERR-9	RED STRAIGHT HOOK
ERR-10	RED SCREW EYE

10 cards each

ROSETT® BLISTER PACKS

Designed for heavy loads in Dry Wall, Plaster Walls, Concrete, Cinder Blocks, Brick, Marble, Stone and other Drillable Materials. Recommended by leading dry wall manufacturers. EASY TO USE - NO SPECIAL TOOLS REQUIRED.

Cat. #	Qty.	Contents
ERB-1	2 Pcs	Blue rosett with panhead screw
ERB-2	2 Pcs	Blue rosett with spacer
ERB-3	1 PC	Blue rosett with round hook
ERB-4	1 PC	Blue rosett with straight hook
ERB-5	1 PC	Blue rosett with screw eye
ERR-6	2 Pcs	Red rosett with panhead screw
ERR-7	2 Pcs	Red rosett with spacer
ERR-8	1 PC	Red rosett with round hook
ERR-9	1 PC	Red rosett with straight hook
ERR-10	1 PC	Red rosett with screw eye



Application/Install information listed on page 34

INSTALLATION

- 1 Drill hole through material. Press anchor flush with wall.
- 2 Mount the object to be fastened and insert the screw. Begin tightening screw.
- 3 Tightening firmly. Screw will not overturn.
- 4 The Rosett forms a strong knot on the back of the material (in the cavity).

LIGHT ROSETT® ANCHOR BLISTER PACKS

Made from nylon, the Light Rosett is designed for anchoring objects in drywall, plasterboard, gypsum fiber boards, chipboards and general thin wiled cavities. Easy to use - no special tools required.

Cat. #	Qty.	Style	Screw Included
ERL-11	4	Red Anchors	w/4 Pcs - #6 x 2" screws
ERL-12	4	Red Anchors	w/4 Pcs - #8 x 2" screws
EBL-13	2	Blue Anchors	w/2 Pcs - #10 x 2-1/2" screws
EBL-14	2	Blue Anchors	w/2 Pcs - #12 x 2-1/2" screws



INSTALLATION

- 1 Drill hole through the board. Hammer Light Rosett flush with wall.
- 2 Use screw size as recommended.
- 3 When being tightened the screw draws up the anchor into a strong knot behind the board (in the cavity).
- 4 Installation is finished.

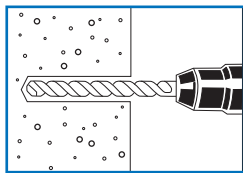
CONICAL, RIB, SUPER RIB ANCHOR BLISTER PACKS



Cat. #	Qty.	Color and Length /Bulk	Screw Included
CLA-1	10 pcs	Blue 3/16" x 3/4"	-
CLA-2	10 pcs	Blue 3/16" x 7/8"	-
CLA-3	10 pcs	Blue 1/4" x 1"	-
CLA-4	5 pcs	Blue 5/16" x 1 3/8"	-
CLA-5	10 pcs	Blue 3/16" x 3/4"	w/10 pcs #6 x 1" screws
CLA-6	10 pcs	Blue 3/16" x 7/8"	w/10 pcs #8 x 1" screws
CLA-7	10 pcs	Blue 1/4" x 1"	w/10 pcs #10 x 1" screws
CLA-8	5 pcs	Blue 5/16" x 1 3/8"	w/5 pcs #14 x 1-1/2" screws
RIB-8	10 pcs	Gray 3/16" x 7/8"	w/10 pcs #8 x 1" screws
RIB-10	10 pcs	Gray 1/4" x 1"	w/10 pcs #10 x 1" screws
SRIB-8	10 pcs	Yellow 3/16" x 1"	w/10 pcs #8 x 1" screws
SRIB-10	10 pcs	Yellow 1/4" x 1-1/4"	w/10 pcs #10 x 1" screws

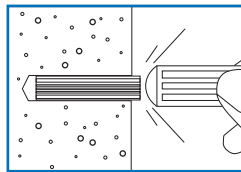
INSTALLATION

1



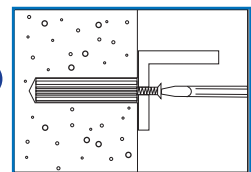
Drill hole with correct diameter and depth.

2

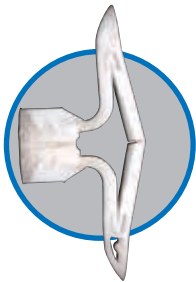


Blow hole clean of dust and material. Insert the anchor into the hole until it is flush with the surface of the base material.

3



Position the fixture. Insert the proper size screw through the top of the anchor and tighten. Be sure the thread fully engages the anchor body.

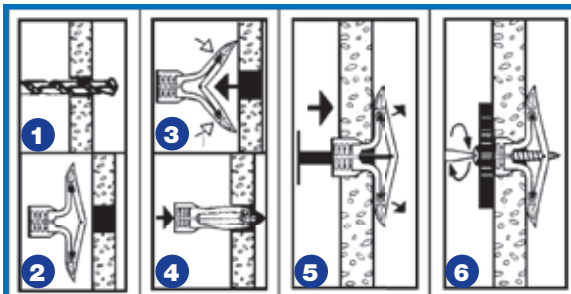


PLASTIC TOGGLE ANCHOR BLISTER PACKS

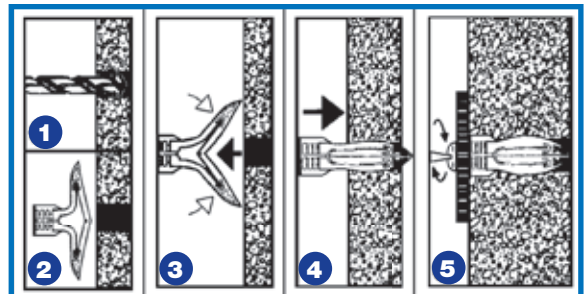
Cat. #	Qty.	Length
PTA-1	5 pcs	3/8" plastic toggle anchor + installation key
PTA-2	5 pcs	1/2" plastic toggle anchor + installation key
PTA-3	5 pcs	5/8" plastic toggle anchor + installation key

INSTALLATION

FLAW



MASONRY



CONICAL ANCHORS - BULK & PACKAGED

Pkg Type	Catalog #	Size	Screw Size	Color	Qty.
B U L K	CAB0608	3/16" x 3/4"	6 - 8	Blue	50,000
	CAB0810	3/16" x 7/8"	8 - 10	Blue	40,000
	CAB1012	1/4" x 1"	10 - 12	Blue	20,000
	CAB1416	5/16" x 1-3/8"	14 - 16	Blue	10,000
	CAC0608	3/16" x 3/4"	6 - 8	Clear	50,000
	CAC0810	3/16" x 7/8"	8 - 10	Clear	40,000
	CAC1012	1/4" x 1"	10 - 12	Clear	20,000
	CAC1416	5/16" x 1-3/8"	14 - 16	Clear	10,000
	CAGR0608	3/16" x 3/4"	6 - 8	Green	50,000
	CAGR0810	3/16" x 7/8"	8 - 10	Green	40,000
	CAGR1012	1/4" x 1"	10 - 12	Green	20,000
	CAGR1416	5/16" x 1-3/8"	14 - 16	Green	10,000
	CAR0608	3/16" x 3/4"	6 - 8	Red	50,000
	CAR0810	3/16" x 7/8"	8 - 10	Red	40,000
	CAR1012	1/4" x 1"	10 - 12	Red	20,000
	CAR1416	5/16" x 1-3/8"	14 - 16	Red	10,000
	CAW0608	3/16" x 3/4"	6 - 8	White	50,000
	CAW0810	3/16" x 7/8"	8 - 10	White	40,000
	CAW1012	1/4" x 1"	10 - 12	White	20,000
	CAW1416	5/16" x 1-3/8"	14 - 16	White	10,000
CAY0608	3/16" x 3/4"	6 - 8	Yellow	50,000	
CAY0810	3/16" x 7/8"	8 - 10	Yellow	40,000	
CAY1012	1/4" x 1"	10 - 12	Yellow	20,000	
CAY1416	5/16" x 1-3/8"	14 - 16	Yellow	10,000	



Pkg Type	Catalog #	Size	Screw Size	Color	Qty.
B A G	CAB0608-BG100	3/16" x 3/4"	6 - 8	Blue	100
	CAB0608-BG1000	3/16" x 3/4"	6 - 8	Blue	1000
	CAR0608-BG100	3/16" x 3/4"	6 - 8	Red	100
	CAR0608-BG1000	3/16" x 3/4"	6 - 8	Red	1000
	CAB0810-BG100	3/16" x 7/8"	8 - 10	Blue	100
	CAB0810-BG1000	3/16" x 7/8"	8 - 10	Blue	1000
	CAR0810-BG100	3/16" x 7/8"	8 - 10	Red	100
	CAR0810-BG1000	3/16" x 7/8"	8 - 10	Red	1000
	CAB1012-BG100	1/4" x 1"	10 - 12	Blue	100
	CAB1012-BG1000	1/4" x 1"	10 - 12	Blue	1000
	CAR1012-BG100	1/4" x 1"	10 - 12	Red	100
	CAR1012-BG1000	1/4" x 1"	10 - 12	Red	1000
	CAB1416-BG100	5/16" x 1-3/8"	14 - 16	Blue	100
	CAB1416-BG500	5/16" x 1-3/8"	14 - 16	Blue	500
	CAR1416-BG100	5/16" x 1-3/8"	14 - 16	Red	100
	CAR1416-BG500	5/16" x 1-3/8"	14 - 16	Red	500



Pkg Type	Catalog #	Size	Screw Size	Color	Qty.
B O X	CAB0608-BX100	3/16" x 3/4"	6 - 8	Blue	100
	CAR0608-BX100	3/16" x 3/4"	6 - 8	Red	100
	CAB0810-BX100	3/16" x 7/8"	8 - 10	Blue	100
	CAR0810-BX100	3/16" x 7/8"	8 - 10	Red	100
	CAB1012-BX100	1/4" x 1"	10 - 12	Blue	100
	CAR1012-BX100	1/4" x 1"	10 - 12	Red	100
	CAB1416-BX50	5/16" x 1-3/8"	14 - 16	Blue	50
	CAR1416-BX50	5/16" x 1-3/8"	14 - 16	Red	50



RIBBED PLASTIC ANCHORS - BULK & PACKAGED



Pkg Type	Catalog #	Size	Screw Size	Color	Qty.
B U L K	RA01	3/16" x 7/8"	8 - 10	Gray	40,000
	RA02	1/4" x 1"	10 - 12	Gray	20,000
	RA03	5/16" x 1-1/4"	14 - 16	Gray	12,000
	RA04	3/8" x 1-1/2"	16 - 18	Red	7,000
	RA05	3/16" x 7/8" - No Lip	8 - 10	Gray	40,000
	RA06	1/4" x 1" - No Lip	10 - 12	Gray	20,000
B A G	RA01-BG1000	3/16" x 7/8"	8 - 10	Gray	1000
	RA02-BG1000	1/4" x 1"	10 - 12	Gray	1000
	RA03-BG500	5/16" x 1-1/4"	14 - 16	Gray	500
B O X	RA01-BX100	3/16" x 7/8"	8 - 10	Gray	100
	RA02-BX100	1/4" x 1"	10 - 12	Gray	100
	RA03-BX50	5/16" x 1-1/4"	14 - 16	Gray	50

SUPER RIBBED PLASTIC ANCHORS - BULK & PACKAGED

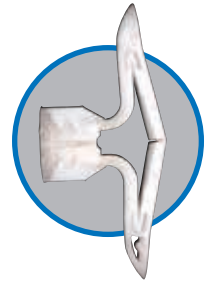


Pkg Type	Catalog #	Size	Screw Size	Color	Qty.
B U L K	SAY01	3/16" x 1"	8 - 10	Yellow	40,000
	SAB02	1/4" x 1-1/4"	10 - 12	Blue	20,000
	SAY02	1/4" x 1-1/4"	10 - 12	Yellow	20,000
	SAGR03	5/16" x 1-1/2"	14 - 16	Green	10,000
	SAY03	5/16" x 1-1/2"	14 - 16	Yellow	10,000
B A G	SAY01-BG1000	3/16" x 1"	8 - 10	Yellow	1000
	SAY02-BG1000	1/4" x 1-1/4"	10 - 12	Yellow	1000
	SAY03-BG500	5/16" x 1-1/2"	14 - 16	Yellow	500
B O X	SAY01-BX100	3/16" x 7/8"	8 - 10	Yellow	100
	SAY02-BX100	1/4" x 1"	10 - 12	Yellow	100
	SAY03-BX50	5/16" x 1-1/4"	14 - 16	Yellow	50

LONGHORN PLASTIC TOGGLE ANCHORS - BULK & PACKAGED

A multipurpose plastic anchor with great versatility. Ideal for use in rooms where moisture is a concern. Recommended for all types of material:

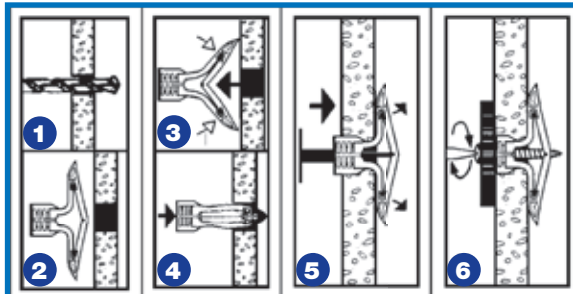
- Wallboard
- Plywood
- Automobiles
- Cement Walls
- Paneling
- Tile
- Masonite
- ABS
- Brick Walls
- Concrete Block
- Stone
- Metal Doors
- Plastic Sheet
- Laminated Products
- Fiberglass Sheet
- Ceiling Panels
- Boat Panels



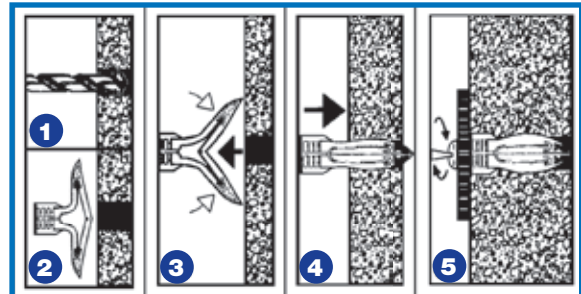
Pkg Type	Catalog #	Description	Used with Screws	Drill Size Required	Range	Qty.
BULK	LH01	3/8" Toggle	6 - 14	5/16"	5/16" - 7/16"	5,000
	LH02	1/2" Toggle	6 - 14	5/16"	7/16" - 9/16"	5,000
	LH03	5/8" Toggle	6 - 14	5/16"	9/16" - 11/16"	5,000
	LHKEY	Installation Key				10,000
BOX	LH01-BX100	3/8" Toggle	6 - 14	5/16"	5/16" - 7/16"	100
	LH02-BX100	1/2" Toggle	6 - 14	5/16"	7/16" - 9/16"	100
	LH03-BX100	5/8" Toggle	6 - 14	5/16"	9/16" - 11/16"	100

Installation

HOLLOW WALL



MASONRY



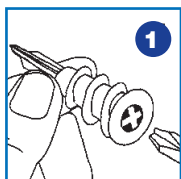
ZIP-IT SELF DRILLING ANCHORS - BULK & PACKAGED



Pkg Type	Catalog #	Description	Used with Screws	Drill Size Required	Qty.
BULK	EZIP-JRBU	Small Nylon	6	None	5,000
	EZIP-NYBU	Large Nylon	8	None	5,000
	EZIP-JRZN	Small Zinc	6	None	5,000
	EZIP-ZNBU	Large Zinc	8	None	2,500
BOX	EZIP-100J	Small Nylon	6	None	100
	EZIP-100N	Large Nylon	8	None	100
	EZIP-100Z	Large Zinc	8	None	100

As a one piece self drilling anchor, the self drilling anchor is designed for use in hollow gypsum wallboard for light to medium guty loads. It is available in nylon for use with #6 screws and in both nylon and zamac alloy for use with #8 screws.

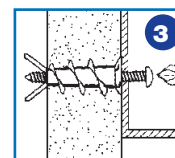
INSTALLATION



1 Insert either #2 or #3 phillips driver bit into the recess of the anchor head. Use a manual screwdriver or a low rpm battery powered electric screw gun.



2 Push the anchor into the surface of the wallboard until the two cutting blades penetrate the surface. Using gentle forward pressure, rotate the anchor until the collar sets flush to the surface of the wall.



3 Put fixture in place, insert and tighten until it feels secure. Do not overtighten.

ROSETT® ANCHORS - 25 PC. BOX

Designed for heavy loads in Dry Wall, Plaster Walls, Concrete, Cinder Blocks, Brick, Marble, Stone and other Drillable Materials. Recommended by leading dry wall manufacturers. EASY TO USE - NO SPECIAL TOOLS REQUIRED.

USE IN WALLS 3/8" - 3/4" THICK

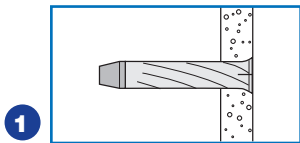
USE IN WALLS 3/4" - 1-1/4" THICK AND IN SOLID MATERIALS

DRILL: DRY WALL -- 3/8" TWIST DRILL
SOLID MATERIAL -- 7/16" MASONRY DRILL

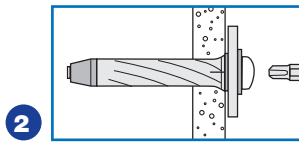


Cat. #	Style
ERB-25	Blue Rosett - Length 2" with 3/16" x 2-1/4" machine screw and washer.
ERBS-25	Blue Rosett with telescopic spacer. Used with U-shaped standards for shell systems and pegboard installations.
ERBH-25	Blue Rosett with hook and plastic cover plate. Great for hanging ceiling fixtures, etc.
ERBSH-25	Blue Rosett with 90° straight hook and plastic cover plate. For vertical hanging of paintings, mirrors and other heavy objects.
ERBSE-25	Blue Rosett with screw eye and plastic cover plate.
ERR-25	Red Rosett - Length 2-3/8" with 3/16" x 2-3/4" machine screw and washer.
ERRS-25	Red Rosett with telescopic spacer. Used with U-shaped standards for shell systems and pegboard installations.
ERRH-25	Red Rosett with hook and plastic cover plate. Great for hanging ceiling fixtures, etc.
ERRSH-25	Red Rosett with 90° straight hook and plastic cover plate. For vertical hanging of paintings, mirrors and other heavy objects.
ERRSE-25	Red Rosett with screw eye and plastic cover plate.

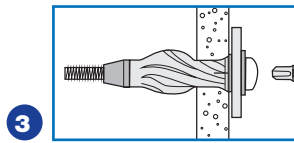
INSTALLATION



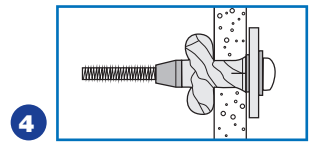
1 Drill hole through material. Press anchor flush with wall.



2 Mount the object to be fastened and insert the screw. Begin tightening screw.



3 Tightening firmly. Screw will not overturn.



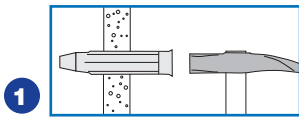
4 The Rosett forms a strong knot on the back of the material (in the cavity).

LIGHT ROSETT ANCHORS - BULK & PACKAGED

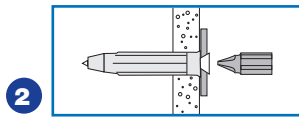
Pkg Type	Catalog #	Description	Used with Screws	Drill Size Required	Qty.
BULK	ERRL-BULK	Red Light	#6 - #8	1/4"	13,000
	ERBL-BULK	Blue Light	#10 - #12	5/16"	6,000
BOX	ERL-100	Red Light	-	1/4"	100
	EBL-50	Blue Light	-	5/16"	50
	ERL-6BX	Red Light	50 - #6 x 2"	1/4"	50
	ERL-8BX	Red Light	50 - #8 x 2"	1/4"	50
	EBL-10BX	Blue Light	25 - #10 x 2-1/2"	5/16"	25
	EBL-12BX	Blue Light	25 - #12 x 2-1/2"	5/16"	25



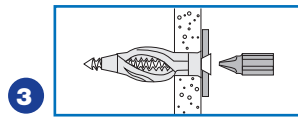
INSTALLATION



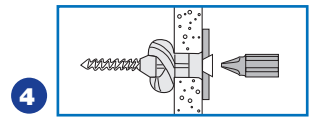
1 Drill hole through the board. Hammer Light Rosett flush with wall.



2 Use screw size as recommended.



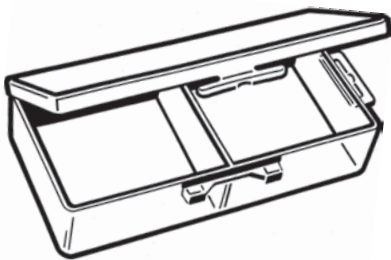
3 When being tightened the screw draws up the anchor into a strong knot behind the board (in the cavity).



4 Installation is finished.

PLASTIC BOXES

- Clear Impact Resistant.
- Molded In Hanging Tab.
- Great for Hardware, Plumbing, Electronic Products.



2 - Compartment Box
Cat. No.: PBX2COMP
Case Qty.: 200

Dimensions
6-3/4" x 3-1/4" x 1-1/2"



1 - Compartment Box
Cat. No.: PBX1COMP
Case Qty.: 200



Mini Box
Cat. No.: PBXMINI
Case Qty.: 400

Dimensions
3-1/4" x 3-1/8" x 1-3/8"

ANCHOR KITS



Conical Anchors



- Impact Resistant Hangable Box.
- High Quality Masonry Drill Bit for Proper Insertion.
- High Quality Screws matching Anchor sizes.
- Assembled in the USA.

Catalog #	Anchor	Color	Contents	
KT01B	Conical	Blue	50/50	8-10 Anch/#8 x 1" Pan w/ 3/16" Bit
KT01R	Conical	Red	50/50	8-10 Anch/#8 x 1" Pan w/ 3/16" Bit
KT02B	Conical	Blue	100/100	8-10 Anch/#8 x 1" Pan w/ 3/16" Bit
KT02R	Conical	Red	100/100	8-10 Anch/#8 x 1" Pan w/ 3/16" Bit
KT03B	Conical	Blue	100/100	8-10 Anch/#8 x 1" Hex w/ 3/16" Bit
KT03R	Conical	Red	100/100	8-10 Anch/#8 x 1" Hex w/ 3/16" Bit
KT04B	Conical	Blue	100/100	10-12 Anch/#10 x 1" Pan w/ 1/4" Bit
KT04GR	Conical	Green	100/100	10-12 Anch/#10 x 1" Pan w/ 1/4" Bit
KT04R	Conical	Red	100/100	10-12 Anch/#10 x 1" Pan w/ 1/4" Bit
KT05B	Conical	Blue	50/50	10-12 Anch/#10 x 1" Pan w/ 1/4" Bit
KT05R	Conical	Red	50/50	10-12 Anch/#10 x 1" Pan w/ 1/4" Bit
KT06B	Conical	Blue	100/100	10-12 Anch/#10 x 1" Tri w/ 1/4" Bit
KT06GR	Conical	Green	100/100	10-12 Anch/#10 x 1" Tri w/ 1/4" Bit
KT06R	Conical	Red	100/100	10-12 Anch/#10 x 1" Tri w/ 1/4" Bit
KT07B	Conical	Blue	100/100	10-12 Anch/#10 x 1-1/4" Pan w/ 1/4" Bit
KT07R	Conical	Red	100/100	10-12 Anch/#10 x 1-1/4" Pan w/ 1/4" Bit
KT08B	Conical	Blue	100/100	10-12 Anch/#12 x 1" Pan w/ 1/4" Bit
KT08R	Conical	Red	100/100	10-12 Anch/#12 x 1" Pan w/ 1/4" Bit
KT09B	Conical	Blue	100/100	10-12 Anch/#12 x 1" Hex w/ 1/4" Bit
KT09R	Conical	Red	100/100	10-12 Anch/#12 x 1" Hex w/ 1/4" Bit
KT10B	Conical	Blue	50/50	14-16 Anch/#14 x 1-1/2" Pan w/ 5/16" Bit
KT10R	Conical	Red	50/50	14-16 Anch/#14 x 1-1/2" Pan w/ 5/16" Bit
KT11B	Conical	Blue	50/50	14-16 Anch/#14 x 1-1/2" Hex w/ 5/16" Bit
KT11R	Conical	Red	50/50	14-16 Anch/#14 x 1-1/2" Hex w/ 5/16" Bit



Extruded Anchors

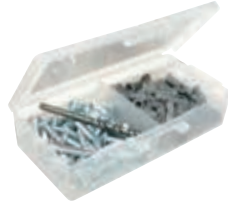
Catalog #	Anchor	Color	Contents	
KT12	Extruded	White	200/200	White 1"/#6 x 1" Pan w/ 3/16" Bit
KT13	Extruded	Red	150/150	Red 1"/#8 x 1" Pan w/ 15/64" Bit
KT14	Extruded	Green	100/100	Green 1"/#10 x 1" Pan w/ 1/4" Bit
KT15	Extruded	Blue	50/50	Blue 1-1/2"/#14 x 1-1/2" Pan w/ 5/16" Bit



Light Rosett Anchors

Catalog #	Anchor	Color	Contents	
KT16	Lt. Rosett	Red	50/50	Red/#6 x 2" Pan w/ 1/4" Bit
KT17	Lt. Rosett	Red	50/50	Red/#8 x 2" Pan w/ 1/4" Bit
KT18	Lt. Rosett	Blue	25/25	Blue/#10 x 2-1/2" Pan w/ 5/16" Bit
KT19	Lt. Rosett	Blue	25/25	Blue/#12 x 2-1/2" Pan w/ 5/16" Bit

ANCHOR KITS



- Impact Resistant Hangable Box.
- High Quality Masonry Drill Bit for Proper Insertion.
- High Quality Screws matching Anchor sizes.
- Assembled in USA.

Ribbed Anchors

Catalog #	Anchor	Color	Contents
KT20	Ribbed	Gray	100/100 3/16" RIB/#8 x 1" Pan w/ 3/16" Bit
KT21	Ribbed	Gray	100/100 3/16" RIB/#8 x 1" Hex w/ 3/16" Bit
KT22	Ribbed	Gray	100/100 1/4" RIB/#10 x 1" Pan w/ 1/4" Bit
KT23	Ribbed	Gray	100/100 1/4" RIB/#10 x 1" Tri w/ 1/4" Bit
KT24	Ribbed	Gray	100/100 1/4" RIB/#10 x 1-1/4" Pan w/ 1/4" Bit
KT25	Ribbed	Gray	100/100 1/4" RIB/#12 x 1" Pan w/ 1/4" Bit
KT26	Ribbed	Gray	100/100 1/4" RIB/#12 x 1" Hex w/ 1/4" Bit
KT27	Ribbed	Gray	50/50 5/16" RIB/#14 x 1-1/2" Pan w/ 5/16" Bit



Super Ribbed Anchors

Catalog #	Anchor	Color	Contents
KT28	Super Rib	Yellow	100/100 3/16" S Rib/#8 x 1" Pan w/ 3/16" Bit
KT29	Super Rib	Yellow	100/100 1/4" S Rib/#10 x 1" Pan w/ 1/4" Bit
KT30	Super Rib	Yellow	100/100 1/4" S Rib/#10 x 1" Tri w/ 1/4" Bit
KT31	Super Rib	Yellow	100/100 1/4" S Rib/#10 x 1-1/4" Pan w/ 1/4" Bit
KT32	Super Rib	Yellow	100/100 1/4" S Rib/#10 x 1-1/2" Pan w/ 1/4" Bit
KT33	Super Rib	Yellow	100/100 1/4" S Rib/#12 x 1" Pan w/ 1/4" Bit
KT34	Super Rib	Yellow	100/100 1/4" S Rib/#12 x 1" Hex w/ 1/4" Bit
KT35	Super Rib	Yellow	50/50 5/16" S Rib/#14 x 1-1/2" Pan w/ 5/16" Bit



Self-Drilling Anchors

Catalog #	Anchor	Color	Contents
EZIP-KTJ	Sm Nylon	White	50/50 Sm Nylon/#6 x 1" Screws & #2 Phillips Tip Bit
EZIP-KTN	Lg Nylon	White	50/50 Lg Nylon/#8 x 1" Screws & #2 Phillips Tip Bit
EZIP-KTZ	Lg Zinc	-	50/50 Lg Zinc/#8 x 1" Screws & #2 Phillips Tip Bit

Screw Head Types



Pan Head



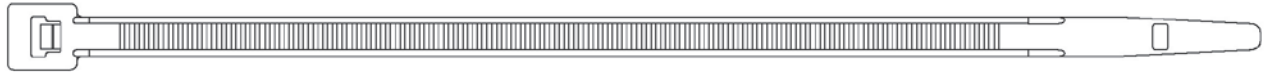
Slot Hex Washer



Tri Combo

CABLE TIES

- Made of 100% Type 6/6 Nylon
- Natural & Weather-Resistant Black
- Non-Corrosive
- Self-Extinguishing
- Operating Temperatures from 40°F (-40°C) to 185°F (85°C)
- Made in USA



NATURAL NYLON 6.6 CABLE TIES

Cat. #	Length	Tensile Strength	Width	Max Bundle Diameter	Meets Military Specification	Pack Qty.
CTN04-018C	4.1"	18 LB.	3/32"	.75"	MS3367-4-9	100
CTN04-018M						1000
CTN05-040C	5.8"	40 LB.	9/64"	1.25"	MS3367-5-9	100
CTN05-040M						1000
CTN07-050C	7.6"	50 LB.	3/16"	2"	MS3367-1-9	100
CTN07-050M						1000
CTN11-050C	11.1"	50 LB.	3/16"	3"	MS3367-7-9	100
CTN11-050M						1000
CTN14-050C	14.6"	50 LB.	3/16"	4"	MS3367-2-9	100
CTN14-050M						1000

NATURAL NYLON 6.6 CABLE TIES - EXTRA HEAVY DUTY

Cat. #	Length	Tensile Strength	Width	Max Bundle Diameter	Meets Military Specification	Pack Qty.
CTN08-120C	9"	120 LB.	5/16"	2"	-	100
CTN14-120C	15"	120 LB.	5/16"	4"	MS3367-3-9	100
CNT24-175Q	24"	175 LB.	11/32"	7.2"	MS3367-8-9	25
CTN24-175L						50
CTN36-175X	36"	175 LB.	11/32"	11"	MS3367-12-9	10
CTN36-175L						50
*CTN48-175X	48"	175 LB.	11/32"	15"	-	10
*CTN48-175L						50

*Not made in the U.S.A.

UV BLACK NYLON 6.6 CABLE TIES

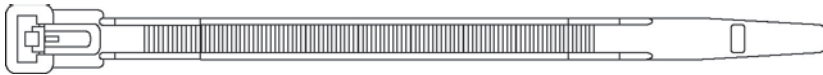
Cat. #	Length	Tensile Strength	Width	Max Bundle Diameter	Meets Military Specification	Pack Qty.
CTB04-018C	4.1"	18 LB.	3/32"	.75"	MS3367-4-0	100
CTB04-018M						1000
CTB05-040C	5.8"	40 LB.	9/64"	1.25"	MS3367-5-0	100
CTB05-040M						1000
CTB07-050C	7.6"	50 LB.	3/16"	2"	MS3367-1-0	100
CTB07-050M						1000
CTB11-050C	11.1"	50 LB.	3/16"	3"	MS3367-7-0	100
CTB11-050M						1000
CTB14-050C	14.6"	50 LB.	3/16"	4"	MS3367-2-0	100
CTB14-050M						1000

CABLE TIES

UV BLACK NYLON 6.6 CABLE TIES - EXTRA HEAVY DUTY

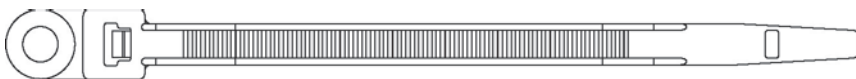
Cat. #	Length	Tensile Strength	Width	Max Bundle Diameter	Meets Military Specification	Pack Qty.
CTB08-120C	9"	120 LB.	5/16"	2"	-	100
CTB14-120C	15"	120 LB.	5/16"	4"	MS3367-3-0	100
CBT24-175Q	24"	175 LB.	11/32"	7.2"	MS3367-8-0	25
CTB24-175L						50
CTB36-175X	36"	175 LB.	11/32"	11"	MS3367-12-0	10
CTB36-175L						50
*CTB48-175X	48"	175 LB.	11/32"	15"	-	10
*CTB48-175L						50

*Not made in the U.S.A.



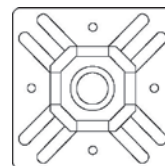
RELEASABLE NYLON 6.6 CABLE TIES

Cat. #	Length	Tensile Strength	Width	Max Bundle Diameter	Meets Military Specification	Pack Qty.
NATURAL						
CTN08-R50C	7.6"	50 LB.	3/16"	2"	-	100
CTN12-R50C	11.1"	50 LB.	3/16"	3"	-	100
CTN14-R50C	14.6"	50LB.	3/16"	4"	-	100
BLACK						
CTB08-R50C	7.6"	50 LB.	3/16"	2"	-	100
CTB12-R50C	11.1"	50 LB.	3/16"	3"	-	100
CTB14-R50C	14.6"	50LB.	3/16"	4"	-	100



SCREW MOUNT NYLON 6.6 CABLE TIES

Cat. #	Length	Tensile Strength	Width	Max Bundle Diameter	Meets Military Specification	Pack Qty.
NATURAL						
CTN07-M50C	8"	50 LB.	3/16"	2"	-	100
BLACK						
CTB07-M50C	8"	50 LB.	3/16"	2"	-	100



NATURAL NYLON 6.6 RUBBER ADHESIVE BASES

Cat. #	Size	Screw Size	Max Bundle Diameter	Meets Military Specification	Pack Qty.
CTNMP-07RC	.75" x .75"	0.162	.165"	-	100
CTNMP-10RC	1" x 1"	0.21	.22"	-	100

CABLE TIES

COLORED NYLON 6.6 CABLE TIES

Cat. #	Length	Tensile Strength	Width	Max Bundle Diameter	Color	Pack Qty.
CTBL05-040C	5.8"	40 LB.	3/32"	.75"	BLUE	100
CTBN05-040C	5.8"	40 LB.	3/32"	.75"	BROWN	100
CTGY05-040C	5.8"	40 LB.	3/32"	.75"	GRAY	100
CTGN05-040C	5.8"	40 LB.	3/32"	.75"	GREEN	100
CTOG05-040C	5.8"	40 LB.	3/32"	.75"	ORANGE	100
CTRD05-040C	5.8"	40 LB.	3/32"	.75"	RED	100
CTY05-040C	5.8"	40 LB.	3/32"	.75"	YELLOW	100
CTBL7-050C	7.6"	50 LB.	3/16"	2"	BLUE	100
CTBN7-050C	7.6"	50 LB.	3/16"	2"	BROWN	100
CTGY7-050C	7.6"	50 LB.	3/16"	2"	GRAY	100
CTGN7-050C	7.6"	50 LB.	3/16"	2"	GREEN	100
CTOG7-050C	7.6"	50 LB.	3/16"	2"	ORANGE	100
CTRD7-050C	7.6"	50 LB.	3/16"	2"	RED	100
CTY07-050C	7.6"	50 LB.	3/16"	2"	YELLOW	100
CTBL14-050C	14.6"	50 LB.	3/16"	4"	BLUE	100
CTBN14-050C	14.6"	50 LB.	3/16"	4"	BROWN	100
CTGY14-050C	14.6"	50 LB.	3/16"	4"	GRAY	100
CTGN14-050C	14.6"	50 LB.	3/16"	4"	GREEN	100
CTOG14-050C	14.6"	50 LB.	3/16"	4"	ORANGE	100
CTRD14-050C	14.6"	50 LB.	3/16"	4"	RED	100
CTY14-050C	14.6"	50 LB.	3/16"	4"	YELLOW	100

FLUORESCENT COLORED NYLON 6.6 CABLE TIES

Cat. #	Length	Tensile Strength	Width	Max Bundle Diameter	Color	Pack Qty.
CTFLB05-040C	5.8"	40 LB.	3/32"	.75"	FL. BLUE	100
CTFLGN05-040C	5.8"	40 LB.	3/32"	.75"	FL. GREEN	100
CTFLOG05-040C	5.8"	40 LB.	3/32"	.75"	FL. ORANGE	100
CTFLP05-040C	5.8"	40 LB.	3/32"	.75"	FL. PINK	100
CTFLY05-040C	5.8"	40 LB.	3/32"	.75"	FL. YELLOW	100
CTFLB07-050C	7.6"	50 LB.	3/16"	2"	FL. BLUE	100
CTFLGN07-050C	7.6"	50 LB.	3/16"	2"	FL. GREEN	100
CTFLOG07-050C	7.6"	50 LB.	3/16"	2"	FL. ORANGE	100
CTFLP07-050C	7.6"	50 LB.	3/16"	2"	FL. PINK	100
CTFLY07-050C	7.6"	50 LB.	3/16"	2"	FL. YELLOW	100
CTFLB14-050C	14.6"	50 LB.	3/16"	4"	FL. BLUE	100
CTFLGN14-050C	14.6"	50 LB.	3/16"	4"	FL. GREEN	100
CTFLOG14-050C	14.6"	50 LB.	3/16"	4"	FL. ORANGE	100
CTFLP14-050C	14.6"	50 LB.	3/16"	4"	FL. PINK	100
CTFLY14-050C	14.6"	50 LB.	3/16"	4"	FL. YELLOW	100

CABLE TIE MERCHANDISER

This 360° rotating display is approximately 7' tall, and almost 20" square so it can fit in places other displays won't. Comes complete with POP signage and display hooks with scan tags.

Each display comes with 35 SKU's of American made Cable Ties made from 6/6 nylon in lengths from 4" to 36". Tensile strengths from 40 lbs. to 175 lbs. with closures of standard, releasable, and mounting head.



Qty.	Size	Qty.	Size
CABLE TIES		RELEASABLE TIES	
8 Bags	- 4.1" Nat. 18 lb. 100/PK	2 Bags	- 7.6" Nat. Rel. 50 lb. 100/PK
8 Bags	- 4.1" UV BLK 18 lb. 100/PK	2 Bags	- 7.6" UV BLK Rel. 50 lb. 100/PK
8 Bags	- 5.8" Nat. 40 lb. 100/PK	2 Bags	- 11.1" Nat. Rel. 50 lb. 100/PK
8 Bags	- 5.8" UV BLK 40 lb. 100/PK	2 Bags	- 11.1" UV BLK Rel. 50 lb. 100/PK
8 Bags	- 7.6" Nat. 50 lb. 100/PK	SCREW MOUNT TIES	
8 Bags	- 7.6" UV BLK 50 lb. 100/PK	2 Bags	- 8" Nat. Sc. Mt. 50 lb. 100/PK
8 Bags	- 11.1" Nat. 50 lb. 100/PK	2 Bags	- 8" UV BLK Sc. Mt. 50 lb. 100/PK
8 Bags	- 11.1" UV BLK 50 lb. 100/PK	COLORED TIES	
6 Bags	- 14.6" Nat. 50 lb. 100/PK	2 Bags	- 7.6" Blue 50 lb. 100/PK
6 Bags	- 14.6" UV BLK 50 lb. 100/PK	2 Bags	- 7.6" Brown 50 lb. 100/PK
3 Bags	- 9" Nat. 120 lb. 100/PK	2 Bags	- 7.6" Gray 50 lb. 100/PK
3 Bags	- 9" UV BLK 120 lb. 100/PK	2 Bags	- 7.6" Green 50 lb. 100/PK
3 Bags	- 15" Nat. 120 lb. 100/PK	2 Bags	- 7.6" Orange 50 lb. 100/PK
3 Bags	- 15" UV BLK 120 lb. 100/PK	2 Bags	- 7.6" Red 50 lb. 100/PK
2 Bags	- 24" Nat. 175 lb. 25/PK	2 Bags	- 7.6" Yellow 50 lb. 100/PK
2 Bags	- 24" UV BLK 175 lb. 25/PK	2 Bags	- 7.6" FL. Green 50 lb. 100/PK
2 Bags	- 36" Nat. 175 lb. 10/PK	2 Bags	- 7.6" FL. Orange 50 lb. 100/PK
2 Bags	- 36" UV BLK 175 lb. 10/PK	2 Bags	- 7.6" FL. Pink 50 lb. 100/PK
		2 Bags	- 7.6" FL. Yellow 50 lb. 100/PK

SCREWDRIVER BIT TIPS



Phillips® Insert Bits - 1/4" Hex Shank

Catalog #	Size	OAL	Type	Pkg. Qty.
RBITP-1	#1	1"	Phillips Insert	100
RBITP-2	#2	1"	Phillips Insert	100
RBITP-3	#3	1"	Phillips Insert	100



Square Insert Bits - 1/4" Hex Shank

Catalog #	Size	OAL	Type	Pkg. Qty.
RBITR-1	#1	1"	Square Insert	100
RBITR-2	#2	1"	Square Insert	100
RBITR-3	#3	1"	Square Insert	100



Phillips® Drywall Bits - 1/4" Hex Shank

Catalog #	Size	OAL	Type	Pkg. Qty.
RBITP-2R	#2	1"	Phillips Drywall	100



Square Power Bits - 1/4" Hex Shank

Catalog #	Size	OAL	Type	Pkg. Qty.
RBITR-12	#1	2"	Square Power	50
RBITR-22	#2	2"	Square Power	50
RBITR-26	#2	6"	Square Power	5



Phillips® Power Bits - 1/4" Hex Shank

Catalog #	Size	OAL	Type	Pkg. Qty.
RBITP-12	#1	1-15/16"	Phillips Power	50
RBITP-13	#1	2-3/4"	Phillips Power	50
RBITP-14	#1	3-1/2"	Phillips Power	10
RBITP-22	#2	1-15/16"	Phillips Power	50
RBITP-23	#2	2-3/4"	Phillips Power	50
RBITP-24	#2	3-1/2"	Phillips Power	10
RBITP-26	#2	6"	Phillips Power	5
RBITP-32	#3	1-15/16"	Phillips Power	50
RBITP-33	#3	2-3/4"	Phillips Power	50
RBITP-34	#3	3-1/2"	Phillips Power	10
RBITP-36	#3	6"	Phillips Power	5



Double-End Bits - 1/4" Hex Shank

Catalog #	OAL	Size	Pkg. Qty.
RBITDE-1	2"	#1 Phillips x 3/16" Slot	50
RBITDE-2	2"	#1 Phillips x #2 Phillips	50
RBITDE-3	2"	#2 Phillips x #2 Phillips	50
RBITDE-4	2"	#1 Square x #2 Square	50
RBITDE-5	2"	#2 Phillips x 1/4" Slot	50



Magnetic Bit Holder - 1/4" Hex Power Drive

Catalog #	OAL	Body Dia.	Pkg. Qty.
RHOB-3	3"	7/16"	10
RHOB-6	6"	7/16"	5



Phillips® Drywall Screw Setter - 1/4" Hex Shank

Catalog #	Size	OAL	Type	Pkg. Qty.
RDWD-1	#2 x 1"		Screw Setter	10



Magnetic Screw Guide Drivers

Catalog #	OAL	Ext. Length	Body Dia.	Pkg. Qty.
RHSG-3	3"	4-3/4"	7/16"	10
RHSG-4	4-3/4"	8"	7/16"	5



Torx® Insert Bits - 1/4" Hex Shank

Catalog #	Size	OAL	Type	Pkg. Qty.
RBITT-10	T10	1"	Torx Insert	100
RBITT-15	T15	1"	Torx Insert	100
RBITT-20	T20	1"	Torx Insert	100
RBITT-25	T25	1"	Torx Insert	100
RBITT-30	T30	1"	Torx Insert	100
RBITT-40	T40	1"	Torx Insert	100



1/4" Magnetic Quick Release Holders

Catalog #	OAL	Body Dia.	Pkg. Qty.
RHQP-2	2-3/8"	9/16"	10
RHQP-3	3"	9/16"	10

SCREWDRIVER BIT TIPS


Torx® Power Bits - 1/4" Hex Shank

Magnetic Nut Setters - 1/4" Hex Power Drive

Catalog #	Size	OAL	Type	Pkg. Qty.	Catalog #	Size	OAL	Type	Pkg. Qty.
RBITT-102	T10	2"	Torx Power	50	RSEN-14S	1/4"	1-3/4"	Standard	10
RBITT-152	T15	2"	Torx Power	50	RSEN-14L	1/4"	2-9/16"	Standard	10
RBITT-156	T15	6"	Torx Power	5	RSEN-146	1/4"	6"	Standard	5
RBITT-202	T20	2"	Torx Power	50	RSEN-516S	5/16"	1-3/4"	Standard	10
RBITT-206	T20	6"	Torx Power	5	RSEN-516L	5/16"	2-9/16"	Standard	10
RBITT-252	T25	2"	Torx Power	50	RSEN-5166	5/16"	6"	Standard	5
RBITT-256	T25	6"	Torx Power	5	RSEN-38S	3/8"	1-3/4"	Standard	10
RBITT-302	T30	2"	Torx Power	50	RSEN-38L	3/8"	2-9/16"	Standard	10
RBITT-402	T40	2"	Torx Power	50	RSEN-386	3/8"	6"	Standard	5
					RSEN-716S	7/16"	1-3/4"	Standard	10
					RSEN-716L	7/16"	2-9/16"	Standard	10
					RSEN-12S	1/2"	1-3/4"	Standard	10
					RSEN-12L	1/2"	2-9/16"	Standard	10


1/4" Hex Power Drive Extensions

Catalog #	OAL	Size	Pkg. Qty.
REXP-142	2"	1/4" Hex - 1/4" Square	10
REXP-143	3"	1/4" Hex - 1/4" Square	10
REXP-382	2"	1/4" Hex - 3/8" Square	10


IMPACT RESISTANT Phillips® Insert Bits - 1/4" Hex Shank

IMPACT RESISTANT Phillips® Power Bits - 1/4" Hex Shank

Catalog #	Size	OAL	Type	Pkg. Qty.	Catalog #	Size	OAL	Type	Pkg. Qty.
RBITIMP-1	#1	1"	Impact Resist.	100	RBITIMP-12	#1	2"	Impact Resist.	50
RBITIMP-2	#2	1"	Impact Resist.	100	RBITIMP-22	#2	2"	Impact Resist.	50
RBITIMP-3	#3	1"	Impact Resist.	100	RBITIMP-32	#3	2"	Impact Resist.	50


IMPACT RESISTANT Square Bits - 1/4" Hex Shank

IMPACT RESISTANT Square Power Bits - 1/4" Hex Shank

Catalog #	Size	OAL	Type	Pkg. Qty.	Catalog #	Size	OAL	Type	Pkg. Qty.
RBITIMR-1	#1	1"	Impact Resist.	100	RBITIMR-12	#1	2"	Impact Resist.	50
RBITIMR-2	#2	1"	Impact Resist.	100	RBITIMR-22	#2	2"	Impact Resist.	50
RBITIMR-3	#3	1"	Impact Resist.	100	RBITIMR-32	#3	2"	Impact Resist.	50


IMPACT RESISTANT Torx® Insert Bits - 1/4" Hex Shank

IMPACT RESISTANT Torx® Power Bits - 1/4" Hex Shank

Catalog #	Size	OAL	Type	Pkg. Qty.	Catalog #	Size	OAL	Type	Pkg. Qty.
RBITIMT-10	T10	1"	Impact Resist.	100	RBITIMT-102	T10	2"	Impact Resist.	50
RBITIMT-15	T15	1"	Impact Resist.	100	RBITIMT-152	T15	2"	Impact Resist.	50
RBITIMT-20	T20	1"	Impact Resist.	100	RBITIMT-202	T20	2"	Impact Resist.	50
RBITIMT-25	T25	1"	Impact Resist.	100	RBITIMT-252	T25	2"	Impact Resist.	50
RBITIMT-30	T30	1"	Impact Resist.	100	RBITIMT-302	T30	2"	Impact Resist.	50
RBITIMT-40	T40	1"	Impact Resist.	100	RBITIMT-402	T40	2"	Impact Resist.	50

BIT TIP JAR MERCHANDISERS



14" x 11" x 16"
3-tier wire display rack
with 12 - 3" x 4" jars

Cat. No. DISP-RBIT RACK1

- 200 #2 x 1" Hex Insert Bit
- 20 3" - 1/4" Bit Holder
- 20 3" Mag. Bit Holder
- 20 4-3/4" Mag. Bit Holder
- 30 #2 Drywall Screw Setter
- 20 2-3/8" Qk Chg Bit Holder
- 100 #2 x 1-15/16 Pwr Bit
- 100 #2 Sq x 1-15/16 Pwr Bit
- 30 1/4" x 1-3/4" Nut Setter
- 30 5/16" x 1-3/4" Nut Setter
- 30 3/8" x 1-3/4" Nut Setter
- 20 1/4" x 2-9/16" Nut Setter

Cat. No. DISP-RBIT RACK2

- 200 #1 x 1" Hex Insert Bit
- 200 #3 x 1" Hex Insert Bit
- 200 #2 x 1" Hex Insert Bit
- 200 #2 x 1" Reduced Hex Insert Bit
- 20 3" Mag. Bit Holder
- 10 2-3/8" Quick Change Mag. Bit Holder
- 10 3" Quick Change Mag. Bit Holder
- 10 7/16" x 1-3/4" Nut Setter
- 10 1/2" x 1-3/4" Nut Setter
- 20 1/4" x 2-9/16" Nut Setter
- 20 5/16" x 2-9/16" Nut Setter
- 20 3/8" x 2-9/16" Nut Setter

All quantities shown are in pieces, they are however sold in packs.

SMALL PACKAGE PROGRAM



Phillips® Insert Bits - 1/4" Hex Shank

Catalog #	Size	OAL	Type	Pcs./Pack
RBITP-1 PK5	#1	1"	Phillips Insert	5
RBITP-2 PK5	#2	1"	Phillips Insert	5
RBITP-3 PK5	#3	1"	Phillips Insert	5



Square Insert Bits - 1/4" Hex Shank

Catalog #	Size	OAL	Type	Pcs./Pack
RBITR-1 PK5	#1	1"	Square Insert	5
RBITR-2 PK5	#2	1"	Square Insert	5
RBITR-3 PK5	#3	1"	Square Insert	5



Phillips® Drywall Bits - 1/4" Hex Shank

Catalog #	Size	OAL	Type	Pcs./Pack
RBITP-2R PK5	#2	1"	Phillips Drywall	5



Square Power Bits - 1/4" Hex Shank

Catalog #	Size	OAL	Type	Pcs./Pack
RBITR-12 PK5	#1	2"	Square Power	5
RBITR-22 PK5	#2	2"	Square Power	5
RBITR-26 PK1	#2	6"	Square Power	1



Phillips® Power Bits - 1/4" Hex Shank

Catalog #	Size	OAL	Type	Pcs./Pack
RBITP-12 PK5	#1	1-15/16"	Phillips Power	5
RBITP-13 PK3	#1	2-3/4"	Phillips Power	3
RBITP-14 PK3	#1	3-1/2"	Phillips Power	3
RBITP-22 PK5	#2	1-15/16"	Phillips Power	5
RBITP-23 PK3	#2	2-3/4"	Phillips Power	3
RBITP-24 PK3	#2	3-1/2"	Phillips Power	3
RBITP-26 PK1	#2	6"	Phillips Power	1
RBITP-32 PK5	#3	1-15/16"	Phillips Power	5
RBITP-33 PK3	#3	2-3/4"	Phillips Power	3
RBITP-34 PK3	#3	3-1/2"	Phillips Power	3
RBITP-36 PK1	#3	6"	Phillips Power	1



Double-End Bits - 1/4" Hex Shank

Catalog #	OAL	Size	Pcs./Pack
RBITDE-1 PK1	2"	#1 Phillips x 3/16" Slot	1
RBITDE-2 PK1	2"	#1 Phillips x #2 Phillips	1
RBITDE-3 PK1	2"	#2 Phillips x #2 Phillips	1
RBITDE-4 PK1	2"	#1 Square x #2 Square	1



Phillips® Drywall Screw Setter - 1/4" Hex Shank

Catalog #	Size	OAL	Type	Pcs./Pack
RDWD-1 PK1	#2 x	1"	Screw Setter	1



Magnetic Bit Holder - 1/4" Hex Power Drive

Catalog #	OAL	Body Dia.	Pcs./Pack
RHOB-3 PK1	3"	7/16"	1
RHOB-6 PK1	6"	7/16"	1



Torx® Insert Bits - 1/4" Hex Shank

Catalog #	Size	OAL	Type	Pcs./Pack
RBITT-10 PK5	T10	1"	Torx Insert	5
RBITT-15 PK5	T15	1"	Torx Insert	5
RBITT-20 PK5	T20	1"	Torx Insert	5
RBITT-25 PK5	T25	1"	Torx Insert	5
RBITT-30 PK5	T30	1"	Torx Insert	5
RBITT-40 PK5	T40	1"	Torx Insert	5



Magnetic Screw Guide Drivers

Catalog #	OAL	Ext. Length	Body Dia.	Pcs./Pack
RHSG-3 PK1	3"	4-3/4"	7/16"	1
RHSG-4 PK1	4-3/4"	8"	7/16"	1



1/4" Magnetic Quick Release Holders

Catalog #	OAL	Body Dia.	Pcs./Pack
RHQP-2 PK1	2-3/8"	9/16"	1
RHQP-3 PK1	3"	9/16"	1

SMALL PACKAGE PROGRAM



Torx® Power Bits - 1/4" Hex Shank

Catalog #	Size	OAL	Type	Pcs./Pack
RBITT-102 PK5	T10	2"	Torx Power	5
RBITT-152 PK5	T15	2"	Torx Power	5
RBITT-202 PK5	T20	2"	Torx Power	5
RBITT-252 PK5	T25	2"	Torx Power	5
RBITT-302 PK5	T30	2"	Torx Power	5
RBITT-402 PK5	T40	2"	Torx Power	5



Magnetic Nut Setters - 1/4" Hex Power Drive

Catalog #	Size	OAL	Type	Pcs./Pack
RSEN-14S PK1	1/4"	1-3/4"	Standard	1
RSEN-14L PK1	1/4"	2-9/16"	Standard	1
RSEN-146 PK1	1/4"	6"	Standard	1
RSEN-516S PK1	5/16"	1-3/4"	Standard	1
RSEN-516L PK1	5/16"	2-9/16"	Standard	1
RSEN-5166 PK1	5/16"	6"	Standard	1
RSEN-38S PK1	3/8"	1-3/4"	Standard	1
RSEN-38L PK1	3/8"	2-9/16"	Standard	1
RSEN-386 PK1	3/8"	6"	Standard	1
RSEN-716S PK1	7/16"	1-3/4"	Standard	1
RSEN-716L PK1	7/16"	2-9/16"	Standard	1
RSEN-12S PK1	1/2"	1-3/4"	Standard	1
RSEN-12L PK1	1/2"	2-9/16"	Standard	1



1/4" Hex Power Drive Extensions

Catalog #	OAL	Size	Pcs./Pack
REXP-142 PK1	2"	1/4" Hex - 1/4" Square	1
REXP-382 PK1	2"	1/4" Hex - 3/8" Square	1



IMPACT RESISTANT Phillips® Insert Bits - 1/4" Hex Shank

Catalog #	Size	OAL	Type	Pcs./Pack
RBITIMP-1 PK5	#1	1"	Impact Resist.	5
RBITIMP-2 PK5	#2	1"	Impact Resist.	5
RBITIMP-3 PK5	#3	1"	Impact Resist.	5



IMPACT RESISTANT Phillips® Power Bits - 1/4" Hex Shank

Catalog #	Size	OAL	Type	Pcs./Pack
RBITIMP-12 PK5	#1	2"	Impact Resist.	5
RBITIMP-22 PK5	#2	2"	Impact Resist.	5
RBITIMP-32 PK5	#3	2"	Impact Resist.	5



IMPACT RESISTANT Square Bits - 1/4" Hex Shank

Catalog #	Size	OAL	Type	Pcs./Pack
RBITIMR-1 PK5	#1	1"	Impact Resist.	5
RBITIMR-2 PK5	#2	1"	Impact Resist.	5
RBITIMR-3 PK5	#3	1"	Impact Resist.	5



IMPACT RESISTANT Square Power Bits - 1/4" Hex Shank

Catalog #	Size	OAL	Type	Pcs./Pack
RBITIMR-12 PK5	#1	2"	Impact Resist.	5
RBITIMR-22 PK5	#2	2"	Impact Resist.	5
RBITIMR-32 PK5	#3	2"	Impact Resist.	5



IMPACT RESISTANT Torx® Insert Bits - 1/4" Hex Shank

Catalog #	Size	OAL	Type	Pcs./Pack
RBITIMT-10 PK5	T10	1"	Impact Resist.	5
RBITIMT-15 PK5	T15	1"	Impact Resist.	5
RBITIMT-20 PK5	T20	1"	Impact Resist.	5
RBITIMT-25 PK5	T25	1"	Impact Resist.	5
RBITIMT-30 PK5	T30	1"	Impact Resist.	5
RBITIMT-40 PK5	T40	1"	Impact Resist.	5



IMPACT RESISTANT Torx® Power Bits - 1/4" Hex Shank

Catalog #	Size	OAL	Type	Pcs./Pack
RBITIMT-102 PK5	T10	2"	Impact Resist.	5
RBITIMT-152 PK5	T15	2"	Impact Resist.	5
RBITIMT-202 PK5	T20	2"	Impact Resist.	5
RBITIMT-252 PK5	T25	2"	Impact Resist.	5
RBITIMT-302 PK5	T30	2"	Impact Resist.	5
RBITIMT-402 PK5	T40	2"	Impact Resist.	5

SMALL BIT TIP MERCHANDISING DISPLAY



BUILD YOUR OWN DISPLAY
ORDER 5 PACKS OF 5 DIFFERENT
ITEMS AND RECEIVE THE MAIN 5-HOOK
DISPLAY WITH HEADER. ADD TO
YOUR PROGRAM AT ANY TIME WITH A
5-HOOK ADD-ON RACK.



**DISP-5 HOOK: MAIN 5 HOOK
DISPLAY W/HEADER**

**DISP-5 HOOK TIER 2: ADD-ON
HOOK DISPLAY**

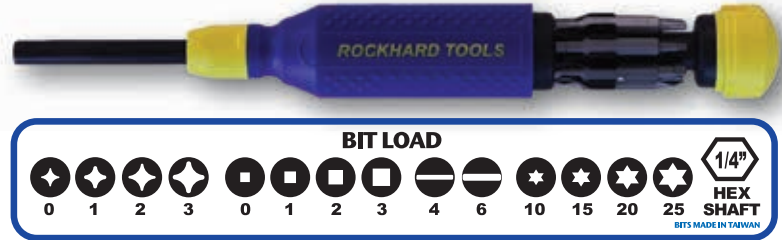
**SIMPLY ADD A TIER
WITH ADDITIONAL
5-HOOK ADD-ON DISPLAY**

ROCKHARD 15-IN-1 SCREWDRIVERS

STANDARD

15in1

This everyday driver is loaded with 7 double-ended bits plus the shaft opening is a 1/4" nut driver. RMEGA-DR01



STAINLESS STEEL

15in1

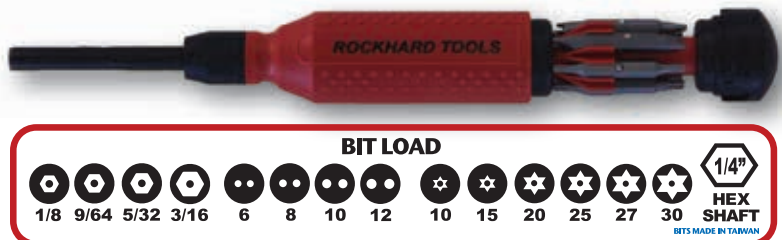
This driver has a stainless steel shaft and electroless nickel-plated bits. Ideal for use outdoors and in marine environments. RMEGA-DR03



TAMPERPROOF

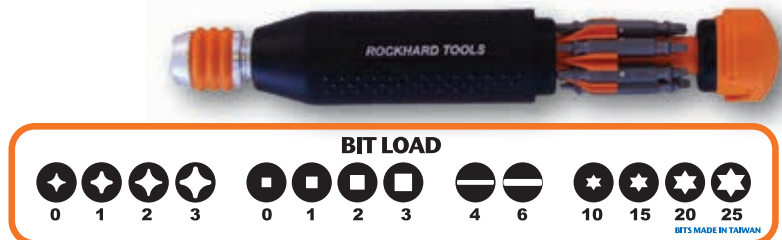
15in1

A must for all commercial/industrial tradesmen, Electricians, Locksmiths. Comes with the most common security bits. RMEGA-DR02



MEGALOK

The most versatile 14-in-1 driver with Quick Change coupler makes using all standard 1/4" power tool accessories a snap. RMEGA-DR04



RATCHETING

This 13-in-1 driver features a 28-tooth ratchet that delivers over 225 inch lbs. of torque strength. RMEGA-DR05



15-IN-1 SCREWDRIVER ACCESSORIES

DOUBLELOK - Rapid load, quick change bits designed for use with power tools

Part #	Description
RMEGA-TF01	Flat (Slot) Bit 4-6 Doublelok
RMEGA-TP01	Phillips Bit 0-3 Doublelok
RMEGA-TP02	Phillips Bit 1-2 Doublelok
RMEGA-TSQ1	Square (Robertson) Bit 0-3 Doublelok
RMEGA-TSQ2	Square (Robertson) Bit 1-2 Doublelok
RMEGA-TT01	Star (Torx) Bit 10-15 Doublelok
RMEGA-TT02	Star (Torx) Bit 20-15 Doublelok



1/4" x 2" Hex Shank Double End Bits
S2 Steel HRC 60 ± 2

TAMPERPROOF - Use with Tamperproof Screwdriver only

Part #	Description
RMEGA-THX1	Hex (Allen) Pin Bit 1/8" - 9/64"
RMEGA-THX2	Hex (Allen) Pin Bit 5/32" - 3/16"
RMEGA-TSP1	Spanner Bit 6-8
RMEGA-TSP2	Spanner Bit 10-12
RMEGA-TTP1	Star (Torx) Pin Bit 10-15
RMEGA-TTP2	Star (Torx) Pin Bit 20-25
RMEGA-TTP3	Star (Torx) Pin Bit 27-30



1/4" x 2" Hex Shank Double End Bits
S2 Steel HRC 60 ± 2

EXTENSIONS - Can be used with all RockHard Screwdrivers

Part #	Description
RMEGA-EXT6	6" Aluminum Extension

MERCHANDISERS

High Visibility Counter-Top Display available at no additional cost with qualifying order of sets listed below.

20 PIECE DISPLAYS

MULTI-DRIVERS

- 8 Standard Drivers
- 4 Tamperproof Drivers
- 4 Stainless Steel Drivers
- 4 Megalok Drivers
- RMEGA-SET1

STANDARD DRIVERS

- 20 Standard Drivers
- RMEGA-SET2



6 PIECE DISPLAYS

UTILITY PACK

- 6 Standard Drivers
- RMEGA-SET3

SECURITY PACK

- 6 Tamperproof Drivers
- RMEGA-SET4

OUTDOOR PACK

- 6 Stainless Steel Drivers
- RMEGA-SET5

QUIK_LOK PACK

- 6 Megalok Drivers
- RMEGA-SET6



FLIP STYLE UTILITY KNIFE

- Locking flip style utility knife available in 4 great colors
- Quick-change mechanism
- Stainless steel belt clip
- Sold only in 24 piece merchandiser
- Replacement blades sold separately

Cat. No.	Color
UTILITY KNIFE – BLACK ROCKHARD	BLACK
UTILITY KNIFE – YELLOW ROCKHARD	YELLOW
UTILITY KNIFE – RED ROCKHARD	RED
UTILITY KNIFE – BLUE ROCKHARD	BLUE
UTILITY KNIFE BLADES – 10/PACK	



6 IN 1 SCREWDRIVER



- Ergonomic Cushion Grip handle
- Each driver includes: 1/4" & 5/16" Nut Driver, 3/16" & 1/4" Slotted and #1 & #2 Phillips rust resistant bits
- All bits made from chrome vanadium alloy steel
- Sold only in 12 piece merchandiser - minimum order is 24 drivers

Cat. No.

SCREWDRIVER – BLUE 6 IN 1 CUSHION GRIP



25' STAINLESS STEEL TAPE MEASURE

- 25' Heavy Duty Stainless Steel Pro-Tape
- Contoured rubber grip • Power lock • Pause Button
- Reinforced magnetic hook • Teflon coated tape
- Sold only in 12 piece merchandiser - minimum order is 12 tape measures

Cat. No.

TM-25SS ROCKHARD



HACKSAW BLADES - BI-METAL COBALT

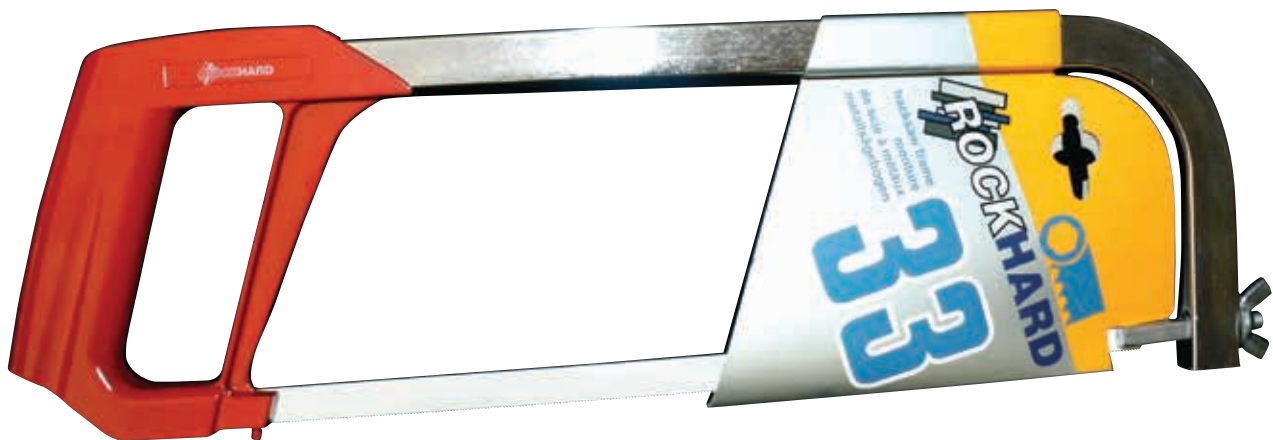
- High speed steel with 8% cobalt
- High speed laser-welded steel edge with flexible back
- Packed 10 blades per sleeve



Catalog #	Length	Width	Thickness	TPI
UCBH-18	12"	1/2"	0.025	18
UCBH-24	12"	1/2"	0.025	24
UCBH-32	12"	1/2"	0.025	32

U-33 HACKSAW FRAME

- Heavy duty unbreakable light alloy handle
- Steel bow section chrome polished with storage for spare blades
- One position flush cut angle
- Robust and compact frame that requires minimum storage space
- Supplied with bi-metal cobalt blade



JIG SAW BLADES - BOSCH SHANK

Cat. #	Pack Qty.	Length	TPI	Application	Blade Cut / Material Thickness
8301-5	5	4"	10	WOOD / PLASTIC	CLEAN CUTS; ALL WOOD TYPES, PLASTICS 1/8" - 1-3/16"
 <p>GROUND SHARPENED HCS/CV</p>					
8302-5	5	4"	6.35	WOOD / PLASTIC	CLEAN CUTS; ALL WOOD TYPES, PLASTICS 3/8" - 1-3/4"
 <p>GROUND SHARPENED HCS/CV</p>					
8303-5	5	4"	8.5	WOOD	CLEAN CUTS; SOFT WOOD, PLASTICS 5/32" - 2"
 <p>SHARPENED AND SIDE SET TEETH HCS/CV</p>					
8304-5	5	4"	6.35	WOOD	QUICK CUT; ALL WOOD TYPES 3/16" - 2"
 <p>SIDE SET & DIAGONALLY SHARPENED TEETH HCS/CV</p>					
8305-5	5	4"	6.35	WOOD	QUICK CUTS: CURVE/PROFILE ALL WOOD TYPES 3/16" - 2"
 <p>SIDE SET & DIAGONALLY SHARPENED TEETH HCS/CV</p>					
8306-5	5	3"	21	METAL	SMOOTH CUTS IN THIN SHEETS OF STEEL 3/64" - 5/64"
 <p>TEETH MILLED & WAVY SET HSS</p>					
8307-5	5	4"	10	WOOD	DOWNSTROKE CLEAN CUTS; ALL WOOD TYPES 1/8" - 1-1/4"
 <p>GROUND SHARPENED HCS/CV</p>					
8308-5	5	5.2"	25	METAL	SMOOTH CUTS IN STEEL, STEEL PIPES & PROFILES STEEL < 1/8" / PIPE & PROFILES < 3-1/8"
 <p>TEETH MILLED & WAVY SET BI-METAL</p>					
8309-5	5	4"	10	WOOD / PLASTIC	CLEAN CUTS; ALL WOOD TYPES, PLASTICS 1/8" - 1-1/4"
 <p>GROUND SHARPENED BI-METAL</p>					

JIG SAW BLADES - BOSCH SHANK

Cat. #	Pack Qty.	Length	TPI	Application	Blade Cut / Material Thickness
8310-5	5	3"	21	METAL	FLEXIBLE BLADE FOR STEEL & STAINLESS STEEL 3/64" - 5/64"
 <p>TEETH MILLED & WAVY SET BI-METAL</p>					
8311-5	5	3.1"	13	WOOD / PLASTIC	DOWNSTROKE CLEAN CUTS IN LAMINATE/PARQUET 3/32" - 3/4"
 <p>GROUND SHARPENED BI-METAL</p>					
8312-5	5	3"	13	METAL	FOR STEEL/STAINLESS STEEL, NON FERROUS , ALUM. 3/32" - 1/4"
 <p>TEETH MILLED & WAVY SET BI-METAL</p>					
8313-5	5	3"	19	WOOD	CLEAN CURVE CUTS IN SOFTWOOD, PLYWOOD, LAMINATE 1/16" - 5/8"
 <p>GROUND SHARPENED HCS/CV</p>					
8314-5	5	4"	10	WOOD	CLEAN CURVE CUTS IN SOFTWOOD, PLYWOOD, LAMINATE 3/32" - 1-3/8"
 <p>CONICALLY GROUND, SHARPENED HCS/CV</p>					
8315-5	5	4"	10/14	WOOD / METAL	FOR NAIL EMBEDDED WOOD / STEEL PIPE-PROFILES WOOD < 3-1/4" / PIPE 3/32" - 3/8"
 <p>TEETH MILLED & SIDE SET, TWIN-CUT TOOTHED BI-METAL</p>					
8316-5	5	4.6"	10	WOOD / PLASTIC	FAST CUTS FOR ALL WOODS & PLASTICS 1/8" - 2-3/8"
 <p>CONICALLY GROUND TEETH/3X SHARPENED HCS/CV</p>					
8317-5	5	5.2"	6.35	WOOD	QUICK CUTS IN ALL WOOD TYPES 3/16" - 3-1/8"
 <p>SIDE SET & DIAGONALLY SHARPENED TEETH HCS/CV</p>					
8318-5	5	5.2"	13	METAL	SMOOTH CUTS IN STEEL, STEEL PIPES & PROFILES STEEL 3/31" - 1/4" / PIPE & PROFILES < 3-1/8"
 <p>TEETH MILLED & WAVY SET BI-METAL</p>					

JIG SAW BLADE MERCHANDISER



18-1/2" x 4-1/4"
5 hook wire display rack
 Sample Rack Shown Includes:

	Description
6 packs	8301-5 4" x 10 TPI
6 packs	8307-5 4" x 10 TPI Down cut
6 packs	8306-5 3" x 21 TPI
6 packs	8312-5 3" x 13 TPI BIM
6 packs	8316-5 4.6" x 10 TPI

Cat. No. DISP-5Hook



**Add a tier with additional
5-hook add-on**



JIG SAW BLADES - PNEUMATIC BI-METAL

Cat. #	Pack Qty.	Length	TPI	Application	Blade Cut / Material Thickness
8809-5	5	3-9/16"	14	METAL	MEDIUM-THIN METALS 5/64" - 7/32" FERROUS & NON FERROUS
8811-5	5	3-9/16"	24	METAL	SHEET METAL 10-16 GAUGE, THIN METAL 1/16" - 1/8" FERROUS & NON FERROUS
8812-5	5	3-9/16"	32	METAL	SHEET METAL 17-21 GAUGE, THIN METAL 3/32" - 7/64" FERROUS & NON FERROUS



HEAVY DUTY RECIPROCATING BLADES - BI-METAL

5 Pack Cat. #	Length	TPI	Purpose	Material Thickness	Width x Length	50 Pack Cat #
99057-5	6"	6	Wood & Nail	< 4"	3/4" x 6" x .035	99057-50
89203-5	6"	6	Wood & Nail	< 4"	3/4" x 6" x .050	89203-50
99058-5	6"	6	Wood Contour	< 4"	7/16" x 6" x .050	99058-50
99050-5	6"	6	Plaster	< 4"	3/4" x 6" x .035	99050-50
89104-5	6"	10	Metal & Composite	Metal 1/4" - 3/8" Composite < 4"	3/4" x 6" x .035	89104-50
99082-5	6"	5/8	Wood & Nail	< 4"	3/4" x 6" x .050	99082-50
89103-5	6"	14	Metal	< 4"	3/4" x 6" x .035	89103-50
89202-5	6"	14	Wood & Metal	solid < 1/4" profile < 4"	3/4" x 6" x .050	89202-50
89102-5	6"	18	Metal	solid < 1/8" profile < 4"	3/4" x 6" x .035	89102-50
89201-5	6"	18	Metal	solid < 1/8" profile < 4"	3/4" x 6" x .050	89201-50
99086-5	6"	10/14	Metal & Composite	Metal 1/4" - 3/8" Composite < 4"	3/4" x 6" x .050	99086-50
89101-5	6"	24	Metal	< 4"	3/4" x 6" x .035	89101-50
89109-5	8"	10	Wood & Nail, Pallet	< 6"	3/4" x 8" x .035	89109-50
89107-5	8"	14	Wood & Metal	4 - 6"	3/4" x 8" x .035	89107-50
89106-5	8"	18	Metal	4 - 6"	3/4" x 8" x .035	89106-50
89206-5	9"	6	Wood & Nail	4 - 6"	3/4" x 9" x .050	89206-50
89205-5	9"	14	Wood & Metal	4 - 6"	3/4" x 9" x .050	89205-50
89208-5	12"	6	Wood & Nail, Pallet	< 6"	3/4" x 12" x .050	89208-50
89207-5	12"	14	Wood & Metal	7 - 10"	3/4" x 12" x .050	89207-50



CARBIDE GRIT RECIPROCATING BLADES - BI-METAL

Cat. #	Length	TPI	Purpose	Material Thickness	Width x Length	25 Pack Cat #
99061-1	6"	Carbide	Ceramic, Cast iron	< 4"	3/4" x 6" x	99061-25
89012-1	8"	Grit	Pipe, Brick	< 4"	3/4" x 8" x	89012-25

EXTRA HEAVY DUTY RECIP BLADES - BI-METAL

3 Pack Cat. #	Length	TPI	Purpose	Material Thickness	Width x Length	25 Pack Cat #
89301-3	6"	5/8	Demolition	< 4"	7/8" x 6" x .062	89301-25
89302-3	9"	5/8	Demolition	4 - 6"	7/8" x 9" x .062	89302-25
89303-3	12"	6	Demolition	6 - 9"	7/8" x 12" x .062	89303-25

RECIPROCATING BLADE MERCHANDISER



Cat. No.: DISP-RECIP
16" Wire Display with 8 hooks

5 Packs	Cat. No.	Description
6	89103-5	6" x 3/4" x .035 x 14TPI
6	89102-5	6" x 3/4" x .035 x 18TPI
6	89101-5	6" x 3/4" x .035 x 24TPI
6	89109-5	8" x 3/4" x .035 x 10TPI
6	89106-5	8" x 3/4" x .035 x 18TPI
6	89206-5	9" x 3/4" x .050 x 6TPI
6	89205-5	9" x 3/4" x .050 x 14TPI
6	89207-5	12" x 3/4" x .050 x 14TPI

1/4" PILOT DRILLS

Cat #: SC-6
1/4" HHS Pilot Drill



For use with SC-1 mandrel

Cat #: SC-12
1/4" HHS Pilot Drill



For use with SC-2R, 3, 3R, SD-2, SD-3 mandrels

Cat #: SC-8
1/4" Carbide Tip Pilot Drill



For use with SC-1 mandrel

Cat #: SC-13
1/4" Carbide Tip Pilot Drill



For use with SC-2R, 3, 3R mandrels

Cat #: SC-5
Extension



12" Extension to fit SC-3

Cat #: SC-11
Ejector spring



Cat #: SC-4
Adapter



Adapter for morse cone #2

Cat #: SC-9
Adapter Nut



Turns 5/18" - 18 thread to 1/2" - 20 & SC-2, 3, 3R mandrels

Cat #: SC-120
Spare Screw



Fits SC-1, SC-2R, SD-2

Cat #: SC-300
Spare Screw



Fits SC-3, 3R, SD-3

MANDRELS

Cat #: SC-1
1/4" Round Shank
1/2" - 20 Thread



Mandrel fitted with SC-6 pilot drill for hole saws 9/16" - 1-3/16"

Cat #: SC-2R
3/8" Hex Shank
1/2" - 20 Thread



Mandrel fitted with SC-12 pilot drill for hole saws 9/16" - 1-3/16"

Cat #: SD-2
SDS Plus Shank
1/2" - 20 Thread



Mandrel fitted with SC-12 pilot drill for hole saws 9/16" - 1-3/16"

Cat #: SC-3
7/16" Hex Shank
5/8" - 18 Thread



Mandrel fitted with SC-12 pilot drill for hole saws 1-1/4" +

Cat #: SC-3R
3/8" Hex Shank
5/8" - 18 Thread



Mandrel fitted with SC-12 pilot drill for hole saws 1-1/4" +

Cat #: SD-3
SDS Plus Shank
5/8" - 18 Thread



Mandrel fitted with SC-12 pilot drill for hole saws 1-1/4" +

Cat #: TC-1 SC-1 mandrel fitted with SC-8 pilot drill

Cat #: TC-2R SC-2R mandrel fitted with SC-13 pilot drill

Cat #: TC-3 SC-3 mandrel fitted with SC-13 pilot drill

Cat #: TC-3R SC-3R mandrel fitted with SC-13 pilot drill

BI-METAL HOLE SAWS

4/6 TPI Variable

10 TPI Fine Pitch



Clamshell Sleeve

Cat # 4/6 TPI	Cat # 4/6 TPI	Cat # 10 TPI	Dia. Inches	Dia. mm	Mandrel Choice	PIPE TAP SIZE in. mm	PIPE ENT. SIZE in. mm	
SC-14			9/16"	14.3	SC-1 or SC-2R or SD-2	3/8"		
SC-16	SLV-16	SCF-16	5/8"	15.5				
SC-17			11/16"	17.5				
SC-19	SLV-19	SCF-19	3/4"	19.0			1/2" 13	3/8" 10
SC-21		SCF-21	13/16"	21.0				
SC-22	SLV-22	SCF-22	7/8"	22.0			3/4" 19	1/2" 13
SC-24		SCF-24	15/16"	24.0				
SC-25	SLV-25	SCF-25	1"	25.0				
SC-27			1-1/16"	27.0				
SC-29	SLV-29	SCF-29	1-1/8"	29.0			1" 25	3/4" 19
SC-30			1-3/16"	30.0	SC-3 or SC-3R or SD-3			
SC-32	SLV-32	SCF-32	1-1/4"	32.0				
SC-33			1-5/16"	33.0				
SC-35	SLV-35	SCF-35	1-3/8"	35.0				1" 25
SC-37			1-7/16"	37.0				
SC-38	SLV-38	SCF-38	1-1/2"	38.0			1-1/4" 32	
SC-40		SCF-40	1-9/16"	40.0				
SC-41	SLV-41		1-5/8"	41.0				
SC-44	SLV-44	SCF-44	1-3/4"	44.0			1-1/2" 38	1-1/4" 32
SC-46			1-13/16"	46.0				
SC-48	SLV-48	SCF-48	1-7/8"	48.0				
SC-51	SLV-51	SCF-51	2"	51.0			1-1/2" 38	
SC-52			2-1/16"	52.0	SC-3 or SC-3R or SD-3			
SC-54	SLV-54	SCF-54	2-1/8"	54.0				
SC-57	SLV-57	SCF-57	2-1/4"	57.0			2" 51	
SC-59			2-5/16"	59.0				
SC-60	SLV-60	SCF-60	2-3/8"	60.0				
SC-64	SLV-64	SCF-64	2-1/2"	64.0				2" 51
SC-65		SCF-65	2-9/16"	65.0				
SC-67	SLV-67		2-5/8"	67.0			2-1/2" 64	
SC-70	SLV-70	SCF-70	2-3/4"	70.0				
SC-73			2-7/8"	73.0				
SC-76	SLV-76		3"	76.0			2-1/2" 64	
SC-79	SLV-79		3-1/8"	79.0				
SC-83	SLV-83		3-1/4"	83.0		3" 76		
SC-86			3-3/8"	86.0				
SC-89	SLV-89		3-1/2"	89.0				
SC-92	SLV-92		3-5/8"	92.0			3" 76	
SC-95	SLV-95		3-3/4"	95.0		3-1/2" 89		
SC-98			3-7/8"	98.0				
SC-102	SLV-102		4"	102.0				
SC-105	SLV-105		4-1/8"	105.0			3-1/2" 89	
SC-108	SLV-108		4-1/4"	108.0		4" 102		
SC-111			4-3/8"	111.0				
SC-114	SLV-114		4-1/2"	114.0		4-1/2" 114	4" 108	
SC-121			4-3/4"	121.0				
SC-127	SLV-127		5"	127.0				
SC-140			5-1/2"	140.0				
SC-152	SLV-152		6"	152.0				
SC-160 *			6-1/3"	160.0				
SC-168 *			6-2/3"	168.0				
SC-177 *			7"	177.0				
SC-210 *			8-1/4"	210.0				

* Not available in clamshell

BI-METAL 4/6 HOLE SAWS

- Professional quality Cobalt Bi-Metal Hole Saws - Variable 4/6 pitch teeth
- Made from M3 high-speed steel
- Positive rake teeth for smoother cutting & better chip clearance
- Wide gullets allow for faster cutting and increased saw life
- Available in two styles of packaging



HOLE SAW MERCHANDISER

- Display the 30 top hole saw sizes from 5/8" - 6" in a compact 25" x 15" x 18" area.
- Powder coated steel merchandiser complete with UPC coded ID strips
- Each hole saw is individually shrink wrapped and bar-coded
- Display comes with mounting hooks so you can hang it on pegboard

Each merchandiser comes with 2 of each of the following sizes:

5/8"	3/4"	7/8"	1"	1-1/8"
1-1/4"	1-3/8"	1-1/2"	1-5/8"	1-3/4"
1-7/8"	2"	2-1/8"	2-1/4"	2-3/8"
2-1/2"	2-5/8"	2-3/4"	3"	3-1/8"
3-1/4"	3-1/2"	3-5/8"	3-3/4"	4"
4-1/8"	4-1/4"	4-1/2"	5"	6"



Only catalog items marked SLV will work with this merchandiser.

BI-METAL HOLE SAW KITS



Cutting Speed Chart

Size	Mild Steel	Tool & Stainless	Cast Iron	Brass	Aluminum
9/16"	580	300	400	790	900
5/8"	550	275	365	730	825
11/16"	500	250	330	665	750
3/4"	460	230	300	600	690
13/16"	425	210	280	560	630
7/8"	390	195	260	520	585
15/16"	370	185	245	495	555
1"	350	175	235	470	525
1-1/16"	320	155	210	420	465
1-1/8"	300	150	200	400	450
1-3/16"	285	145	190	380	425
1-1/4"	275	140	180	360	410
1-5/16"	260	135	175	345	390
1-3/8"	255	130	170	335	375
1-7/16"	240	120	160	315	360
1-1/2"	230	115	150	300	345
1-9/16"	220	110	145	290	330
1-5/8"	210	105	140	280	315
1-11/16"	205	100	135	270	305
1-3/4"	195	95	130	250	295
1-13/16"	190	95	125	250	285
1-7/8"	180	90	120	240	270
2"	170	85	115	230	255
2-1/16"	165	80	110	220	245
2-1/8"	160	80	105	210	240
2-1/4"	150	75	100	200	225
2-5/16"	140	70	95	190	220
2-3/8"	140	70	95	190	220
2-1/2"	135	65	90	180	205
2-9/16"	130	65	85	175	200
2-5/8"	130	65	85	170	195
2-3/4"	125	65	80	170	185
2-7/8"	120	60	80	160	180
3"	115	55	75	150	170
3-1/8"	110	55	70	140	165
3-1/4"	105	50	70	140	155
3-3/8"	100	50	65	130	150
3-1/2"	95	45	65	130	145
3-5/8"	95	45	60	120	140
3-3/4"	90	45	60	120	135
3-7/8"	85	40	55	110	130
4"	85	40	55	110	130
4-1/8"	80	40	55	110	120
4-1/4"	80	40	55	110	120
4-3/8"	75	35	50	100	105
4-1/2"	75	35	50	100	105
4-3/4"	70	35	45	90	95
5"	65	30	45	90	95
5-1/2"	60	30	40	80	85
6"	55	25	35	75	85

KIT CONTENTS

Plumbers **Cat # SC-3900**
 8 Pc. Set contains:
 3/4", 7/8", 1-1/8", 1-1/2", 1-3/4", 2-1/4", SC-2R, SC-3R

Electricians **Cat # SC-3902**
 8 Pc. Set contains:
 7/8", 1-1/8", 1-3/8", 1-3/4", 2", 2-1/2", SC-2R, SC-3R

Maintenance **Cat # SC-3904**
 13 Pc. Set contains:
 3/4", 7/8", 1", 1-1/4", 1-3/8", 1-1/2", 1-3/4", 2", 2-1/4", 2-1/2", 3", SC-2R, SC-3R

Master Electricians **Cat # SC-3906**
 17 Pc. Set contains:
 7/8", 1-1/8", 1-3/8", 1-1/2", 1-3/4", 2", 2-1/2", 3", 3-5/8", 4-1/8", 4-1/2", SC-1, SC-2R, SC-3R, SC-5, 2pc. SC-12,

Locksmiths **Cat # SC-3908**
 8 Pc. Set contains:
 7/8", 1", 1-1/4", 1-3/8", 1-3/4", 2-1/8", SC-2R, SC-3R

BI-METAL HOLE SAWS

Tipped Grit

Carbide Tipped



Carbide Grit



Cat # 3 TPI	Cat #	Dia. Inches	Dia. mm	Mandrel Choice	PIPE TAP SIZE		PIPE ENT. SIZE		
					in.	mm	in.	mm	
TCT-19	TC-19	3/4"	19.0	TC-1 or TC-2R	1/2"	13	3/8"	10	
TCT-21		13/16"	21.0						
TCT-22	TC-22	7/8"	22.2			3/4"	19	1/2"	13
TCT-24		15/16"	23.8						
TCT-25	TC-25	1"	25.4						
TCT-27		1-1/16"	27.0						
TCT-29	TC-29	1-1/8"	28.8			1"	25	3/4"	19
TCT-30		1-3/16"	30.0						
TCT-32	TC-32	1-1/4"	31.8						
TCT-35	TC-35	1-3/8"	34.9					1"	25
TCT-37		1-7/16"	36.5						
TCT-38	TC-38	1-1/2"	38.1		1-1/4"	32			
TCT-40		1-9/16"	39.7						
TCT-41		1-5/8"	41.2						
TCT-43		1-11/16"	42.9						
TCT-44	TC-44	1-3/4"	44.5		1-1/2"	38	1-1/4"	32	
TCT-46		1-13/16"	46.0						
TCT-48		1-7/8"	47.6						
TCT-51	TC-51	2"	50.8				1-1/2"	38	
TCT-52		2-1/16"	52.4						
TCT-54		2-1/8"	53.9	TC-3 or TC-3R					
TCT-57		2-1/4"	57.2			2"	51		
TCT-60	TC-60	2-3/8"	60.3						
TCT-64	TC-64	2-1/2"	63.5					2"	51
TCT-65		2-9/16"	65.1						
TCT-67		2-5/8"	66.7			2-1/2"	64		
TCT-70		2-3/4"	69.9						
TCT-73		2-7/8"	73.0						
TCT-76		3"	76.2					2-1/2"	64
TCT-79		3-1/8"	79.4						
TCT-83		3-1/4"	82.6		3"	76			
TCT-86		3-3/8"	85.7						
TCT-89		3-1/2"	88.9						
TCT-92		3-5/8"	92.1				3"	76	
TCT-95		3-3/4"	95.3		3-1/2"	89			
TCT-98		3-7/8"	98.4						
TCT-102		4"	101.6						
TCT-105		4-1/8"	104.8				3-1/2"	89	
TCT-108		4-1/4"	108.0		4"	102			
TCT-111		4-3/8"	111.1						
TCT-114		4-1/2"	114.3		4-1/2"	114	4"	108	
TCT-121		4-3/4"	120.7						
TCT-127		5"	127.0						
TCT-140		5-1/2"	139.7						
TCT-152		6"	152.4						

APPLICATIONS

CARBIDE TIPPED - ABRASIVE MATERIAL SUCH AS PARTICLE BOARD, FIBERGLASS, CAST IRON, ASBESTOS BOARD & FORMICA.

CARBIDE GRIT - ABRASIVE MATERIALS SUCH AS CERAMICS, FIBERGLASS, HARD WOODS, CAST IRON, & COMPOSITES. BEST SUITED FOR THIN MATERIALS.



PORTABLE BANDSAW BLADES

- Precision formed teeth create fast, clean cuts.
- Heavy duty M42 steel with .025" blade thickness.
- High speed steel teeth for a sharper cut & long lasting blade.

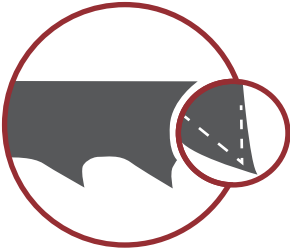
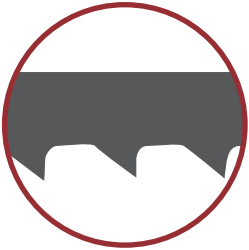
Catalog #	Size	Qty/Bag	Pitch	TPI
31244-14	44-7/8" x 1/2" x .025	3	Constant	14
31244-812	44-7/8" x 1/2" x .025	3	Variable	8/12
31244-1014	44-7/8" x 1/2" x .025	3	Variable	10/14

BANDSAW BLADES

Carbon Flex Bandsaw Blades

- Low alloy carbon steel
- Only cutting edge is hardened
- High flexibility

USE: For cutting soft steel, semi-hard steels, non ferrous metals, wood and plastics.



Skip Tooth

Size	2G	3G	4G	6G
1/8" x .025	-	-	-	-
1/4" X .025	-	-	F140G-04	F140G-06
3/8" x .025	-	F380G-03	F380G-04	F380G-06
1/2" x .025	-	F120G-03	F120G-04	F120G-06
5/8" x .032	-	F580G-03*	F580G-04*	-
3/4" x .032	-	F340G-03	F340G-04	F340G-06
1" x .035	F100G-02	F100G-03	F100G-04	-

* while supplies last

Raker Tooth

Size	6N	8N	10N	14N	18N	24N
1/8" x .025	-	-	-	F180N-14*	F180N-18*	F180N-24*
1/4" X .025	-	-	F140N-10	F140N-14	F140N-18	F140N-24
3/8" x .025	-	F380N-08	F380N-10	F380N-14	F380N-18	-
1/2" x .025	F120N-06	F120N-08*	F120N-10	F120N-14	F120N-18	F120N-24
5/8" x .032	-	F580N-08*	-	F580N-14*	-	-
3/4" x .032	F340N-06	F340N-08	F340N-10	F340N-14	F340N-18	-
1" x .035	-	F100N-08	F100N-10	F100N-14	F100N-18	-

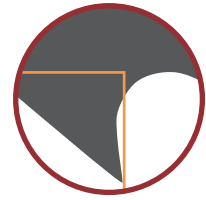
* while supplies last

BANDSAW BLADES

Bi-Metal Bandsaw Blades

Narrow Width Bands (M-42)

- Solids and thick wall tubing of medium to difficult materials, such as stainless steels
- 5° positive rake for easier penetration and reduced vibrations
- Narrow width from 1/4" to 1/2" for contour and miter cutting
- HSS Edge contains 8% cobalt



Size	Positive Raker		Standard Raker		14N	18N
	C4	C6	8N	10N		
1/4" x .035	-	-	-	414N-10	414N-14	-
3/8" x .035	438C-04*	438C-06*	438N-08*	438N-10*	438N-14*	438N-18*
1/2" x .025	-	-	4122N-08*	4122N-10*	4122N-14	-
1/2" x .035	-	-	412N-08*	412N-10*	412N-14	-

* while supplies last

Size	Standard Variable		6/10	8/12	10/14
	4/6	5/8			
3/8" x .035	-	-	438VN-0610*	-	438VN-1014
1/2" x .025	-	-	4122V-0610	4122V-0812	4122V-1014
1/2" x .035	-	-	-	412VN-0812	412VN-1014

* while supplies last

M-42 Straight Tooth

- All-purpose band for moderate to difficult to cut materials
- Higher heat and wear durability
- 0° rake for smoother cutting and general applications



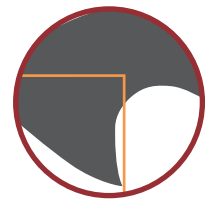
Size	Standard Raker		8N	10N	14N
	4N	6N			
3/4" x .035	-	-	434N-08*	434N-10	-
1" x .035	41N-04*	41N-06	41N-08	41N-10*	41N-14

* while supplies last

Size	Standard Variable					
	3/4	4/6	5/8	6/10	8/12	10/14
3/4" x .035	-	434VN-0406	434VN-0508	434VN-0610	434VN-0812	434VN-1014
1" x .035	41VN-0304	41VN-0406	41VN-0508	41VN-0610	41VN-0812	41VN-1014
1-1/4" x .042	4114S-0304	4114S-0406	4114S-0508	-	-	-

M-42 Positive Rake Tooth

- Solids and thick wall tubing of medium to difficult materials, such as stainless steels
- 5° positive rake for easier penetration and reduced vibrations



Size	Raker	Variable		
	C4	2/3	3/4	4/6
3/4" x .035	434C-04	-	-	-
1" x .035	-	41VI-0203*	41VI-0304	-
1-1/4" x .042	-	4114P-0203	4114P-0304	-
1-1/2" x .050	-	4112P-0203	-	4112P-0406

* while supplies last



DECIMAL EQUIVALENTS

DECIMAL EQUIVALENTS

Inch	Dec-mal	mm	Wire	Tap Sizes	Inch	Dec-mal	mm	Wire	Tap Sizes	Inch	Dec-mal	mm	Wire	Tap Sizes	Inch	Dec-mal	mm	Wire	Tap Sizes	Inch	Dec-mal	mm	Tap Sizes		
	.0059	.15	97			.0531	1.35				.1570		22	3/16-32NS			.2874	7.30				5/8	.6250		
	.0063	.16	96			.0550	1.40	54			.1575	4.00					.2900		L			41/64	.6299	16.00	
	.0067	.17	95			.0551	1.40				.1590		21	#10-32			.2913	7.40	M			21/32	.6406		
	.0071	.18	94			.0571	1.45				.1610		20				.2950					43/64	.6496	16.50	3/4-10NC
	.0075	.19	93			.0591	1.50				.1614	4.10					.2953	7.50				11/16	.6582		
	.0079	.20	92			.0595	1.50	53	#1-64		.1654	4.20			19/64		.2969		N			45/64	.6693	17.00	3/4-16NF
	.0083	.21	91			.0610	1.55				.1660		19				.2992	7.60				23/32	.6719		
	.0087	.22	90		1/16	.0625	1.60				.1673	4.25					.3020					49/64	.6875	17.50	1/2-14 Pipe
	.0091	.23	89			.0630	1.60	52	#1-72	11/64	.1693	4.30					.3031	7.70				51/64	.7031		
	.0094	.24				.0635	1.65				.1695		18				.3051	7.75				27/32	.7087	18.00	7/8-9NC
	.0095		88			.0650	1.65				.1719				5/16		.3071	7.80	O	3/8-16NC		3/4	.7188		
	.0098	.25				.0669	1.70				.1730		17	#12-24			.3110	7.90				47/64	.7283	18.50	
	.0100		87			.0670	1.75	51			.1732	4.40					.3125	8.00				25/32	.7344		
	.0102	.26				.0689	1.75				.1770		16				.3150					51/64	.7480	19.00	
	.0105		86			.0700	1.80	50	#2-56		.1772	4.50					.3160	8.10				49/64	.7500		
	.0106	.27				.0709	1.80				.1800		15				.3189	8.20				25/32	.7556	19.50	
	.0110	.28	85			.0728	1.85				.1811	4.60					.3228	8.20				13/16	.7677		
	.0114	.29				.0730	1.85	49			.1820		14				.3230		P			51/64	.7712	20.00	
	.0115		84			.0748	1.90				.1850		13				.3248	8.25				13/16	.7874		
	.0118	.30				.0760	1.90	48			.1850	4.70					.3268	8.30				51/64	.7969		
	.0120		83			.0768	1.95			3/16	.1870	4.75			21/64		.3281					27/32	.8071	20.50	7/8-14NF
	.0125		82		5/64	.0781					.1875						.3307	8.40				53/64	.8125		
	.0126	.32				.0785		47	#3-48		.1890	4.80					.3320		Q	3/8-24NF		27/32	.8268	21.00	
	.0130		81			.0787	2.00				.1890		12	7/32-24NS			.3346	8.50				55/64	.8281		
	.0134	.34				.0807	2.05				.1910		11				.3386	8.60				29/32	.8438		
	.0135		80			.0810	2.05	46	#3-56		.1929	4.90					.3390		R	1/8-27 Pipe		59/64	.8465	21.50	
	.0138	.35				.0820	2.10	45			.1935		10				.3425	8.70				15/16	.8594		
	.0142	.36				.0827	2.10				.1960		9		11/32		.3438					7/8	.8661	22.00	1-8NC
	.0145		79			.0846	2.15				.1969	5.00					.3445	8.75				57/64	.8750		
	.0150	.38				.0860	2.20	44			.1990		8				.3465	8.80				29/32	.8858	22.50	
	.0156		78			.0866	2.20				.2008	5.10					.3480		S			59/64	.8906		
	.0157	.40				.0886	2.25	43	#4-40		.2010		7	1/4-20			.3504	8.90				15/16	.8955	23.00	
	.0160		77			.0890	2.25				.2031						.3543	9.00				29/32	.9055		
	.0165	.42				.0906	2.30				.2040		6				.3580		T			59/64	.9062		
	.0173	.44				.0925	2.35				.2047	5.20					.3583	9.10				15/16	.9219	23.50	3/4-14 Pipe
	.0177	.45				.0935		42	#4-48		.2055		5		23/64		.3594					29/32	.9252		
	.0180		76		3/32	.0938					.2067	5.25					.3622	9.20				59/64	.9375		
	.0181	.46				.0938	2.40				.2087	5.30					.3642	9.25				15/16	.9449	24.00	1-14NF
	.0189	.48				.0945	2.40	41			.2090		4				.3661	9.30				61/64	.9531		
	.0197	.50				.0960	2.45				.2126	5.40					.3680		U	7/16-14NC		61/64	.9646	24.50	
	.0200		75			.0965	2.45				.2130		3	1/4-28			.3701	9.40				31/32	.9688		
	.0210	.55				.0980	2.50	40			.2165	5.50		1/4-32	3/8		.3740	9.50				63/64	.9843	25.00	1 1/8-7NC
	.0217		74			.0984	2.50	39	#5-40		.2187						.3750					1	.9844		
	.0225		73			.0995	2.50	38			.2205	5.60					.3770		V			1	1.000	25.50	
	.0236	.60				.1015	2.60				.2210		2	1/4-36			.3780	9.60				1 1/64	1.0156		
	.0240		72			.1024	2.60	37	#5-44		.2244	5.70					.3819	9.70				1 1/32	1.0236	26.00	
	.0250		71			.1040	2.70				.2264	5.75					.3839	9.75				1 1/32	1.0312		
	.0256	.65				.1063	2.70	36	#6-32		.2280		1	5/16-18			.3858	9.80				1 1/32	1.0433	26.50	
	.0260		70			.1065	2.75				.2283	5.80					.3860		W	7/16-20		1 1/32	1.0469		
	.0276	.70				.1083	2.75				.2323	5.90					.3898	9.90				1 1/16	1.0625		
	.0280		69			.1094	2.80	35			.2340		A				.3906					1 1/16	1.0630	27.00	
	.0292		68			.1100	2.80				.2344				15/64		.3937	10.00				1 1/64	1.0781		
	.0295	.75				.1102	2.80				.2362	6.00					.3970					1 1/64	1.0827	27.50	
	.0310		67			.1110	2.80	34	#6-40		.2380		B				.4040		X			1 1/32	1.0938		
	.0312		66			.1130	2.90	33			.2402	6.10			13/32		.4062		Y			1 1/32	1.1024	28.00	
	.0315	.80				.1142	2.90				.2420		C				.4130		Z			1 1/64	1.1094		
	.0320		65			.1160	3.00	32			.2441	6.20					.4134	10.50				1 1/64	1.1094		
	.0330		64			.1181	3.00	31			.2460		D				.4219					1 1/8	1.1220	28.50	
	.0335	.85				.1200	3.10				.2461	6.25					.4331	11.00				1 1/8	1.1250		
	.0350		63			.1220	3.10				.2480	6.30			7/16		.4375					1 1/8	1.1406		
	.0354	.90			1/8	.1250			5/32-32NS		.2500						.4528	11.50				1 1/8	1.1417	29.00	
	.0360		62			.1260	3.20			1/4	.2520	6.40	E				.4531					1 1/8	1.1562		
	.0370		61			.1280	3.25				.2559	6.50					.4688					1 1/8	1.1614	29.50	1-11.5 Pipe
	.0374	.95				.1285	3.30	30	5/32-36NS		.2570		F	5/16-24			.4724	12.00				1 1/8	1.1719		1 1/4-12 Pipe
	.0380		60			.1299	3.30				.2598	6.60			31/64		.4844					1 1/8	1.1811	30.00	
	.0390	1.00				.1339	3.40				.2610		G		1/2		.4921	12.50				1 1/8	1.1875		
	.0394		59			.1360	3.50	29	#8-32		.2638	6.70					.5000					1 1/8	1.2008	30.50	1 3/8x6
	.0400		58			.1378	3.50				.2656						.5188	13.00				1 1/8	1.2031		
	.0410	1.05			9/64	.1405		28			.2656						.5188					1 1/8	1.2188		
	.0413		57			.1406	3.60				.2657	6.75					.5188					1 1/8	1.2205	31.00	

